

Figure S1. The CH₂ stretching region of the IR/FT spectra of the C₁₄-Mica-n-m (n=2 and 3; m=0.5, 1, 2, 3 and 10 CEC). The signals are centered at $2919 \pm 1 \text{ cm}^{-1}$ and $2849 \pm 1 \text{ cm}^{-1}$, for ν_{as} and ν_s vibrational modes respectively.

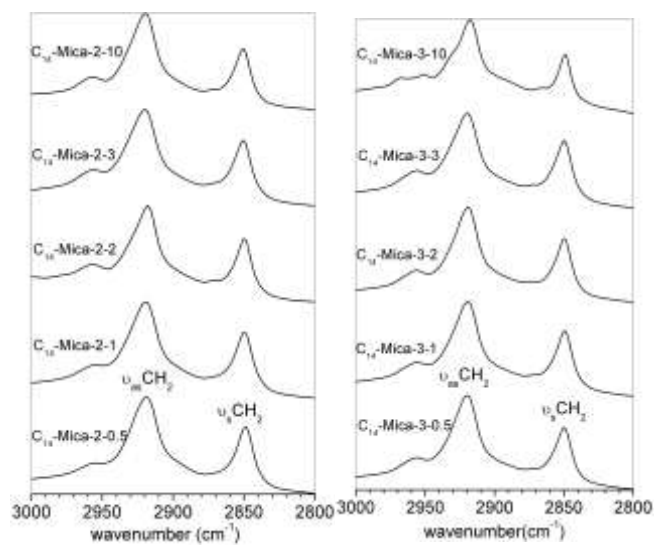


Figure S2. The ^{13}C MAS NMR spectra of the C_{14} -Mica-n-m (n=2 and 3; m=0.5, 2 and 10 CEC)

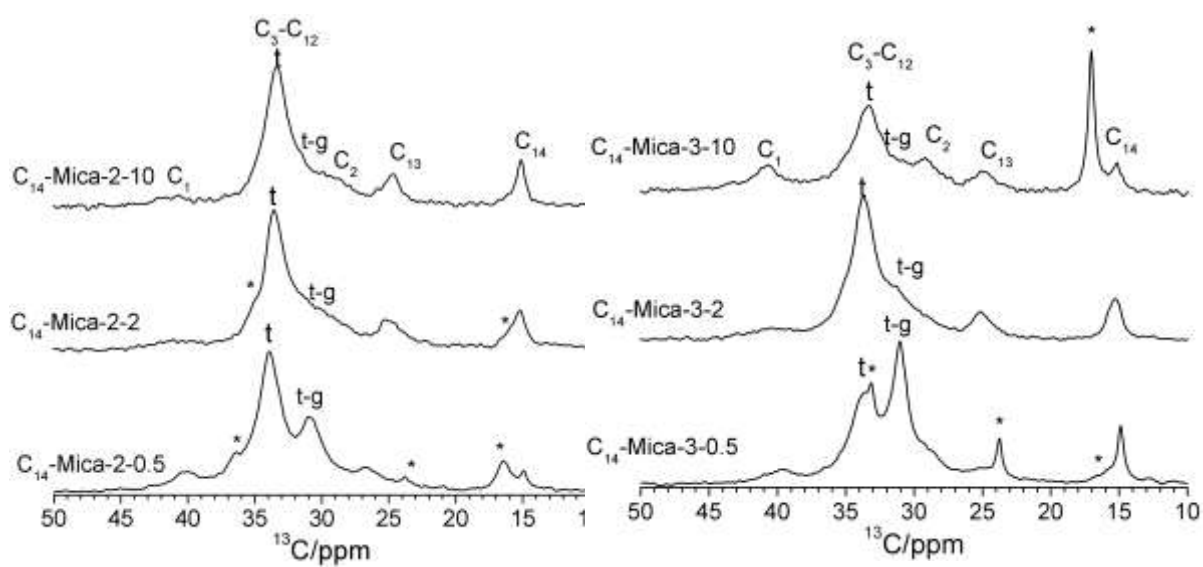


Figure S3. The ^{27}Al MAS NMR spectra of the $\text{C}_{14}\text{-Mica-}n\text{-}m$ ($n=2$ and 3 ; $m=0.5, 2$ and 10 CEC)

