

Supporting Information

Directed Assembly of Ultrathin Gold Nanowires over Large Area by Dielectrophoresis

R. Venkatesh, Subhajit Kundu, Avradip Pradhan, T. Phanindra Sai, Arindam Ghosh and N. Ravishankar

I. TEM imaging of Au nanowires

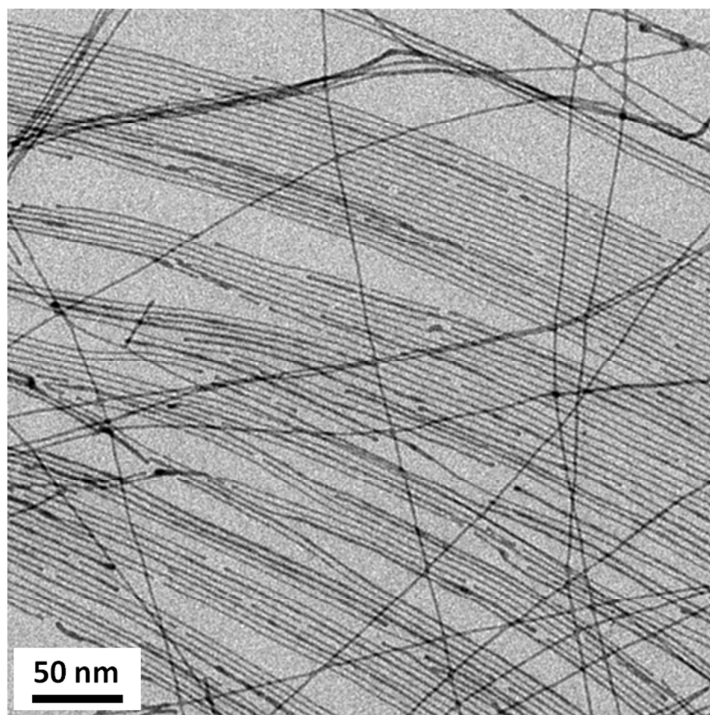


Figure S1: TEM image of Au nanowires deposited onto the TEM support membrane during growth.

II. SEM imaging of Au nanowires

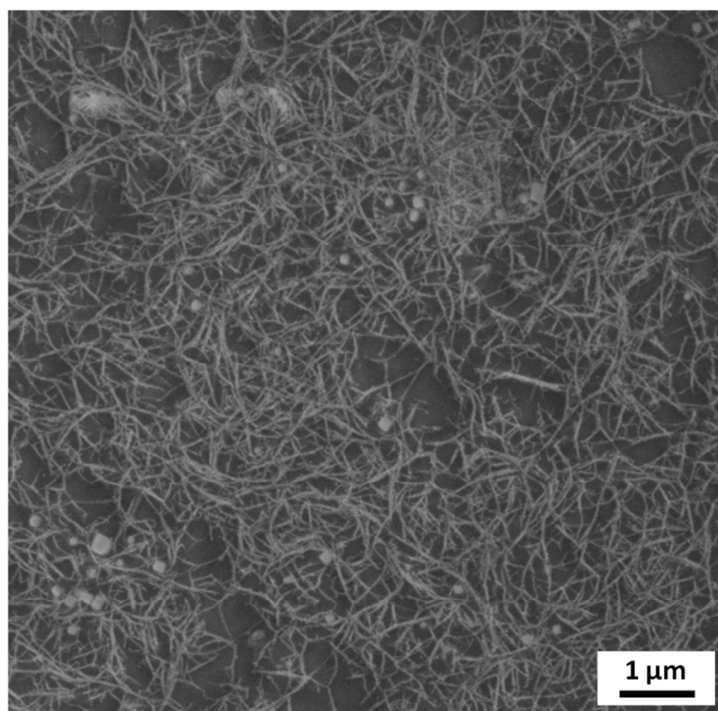


Figure S2: SEM image of toluene cleaned Au nanowires drocasted onto Si wafer.

III.SEM imaging of Au nanowire in different V_{pp} and Frequency

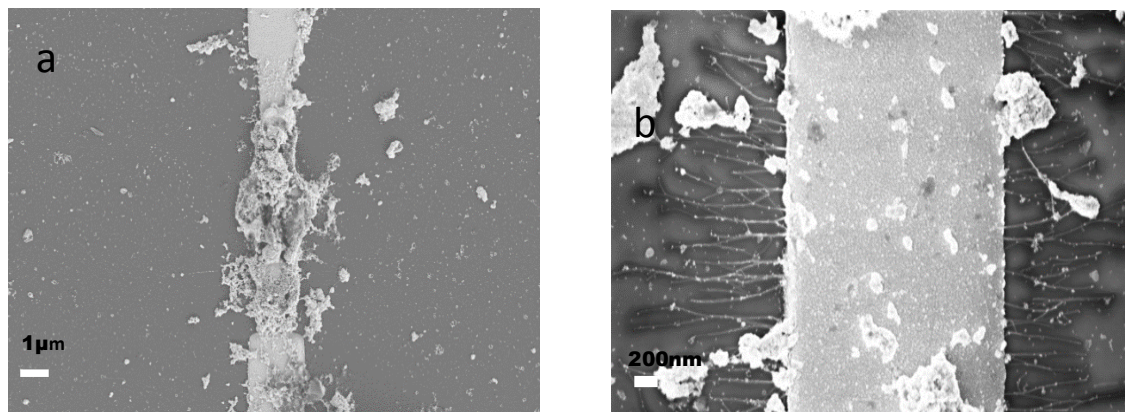


Figure S3a,Between the contact pads; **FigureS3b** along the sides of the contact pads in 5MHz; 10V_{pp} range

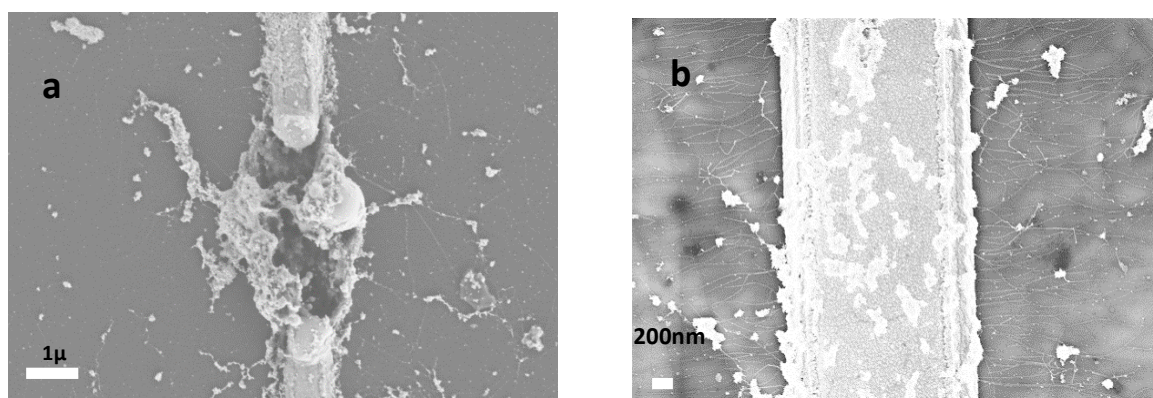


Figure S4a Between the contact pads; **Figure S4b** along the sides of the contact pads in 7MHz; 10V_{pp} range

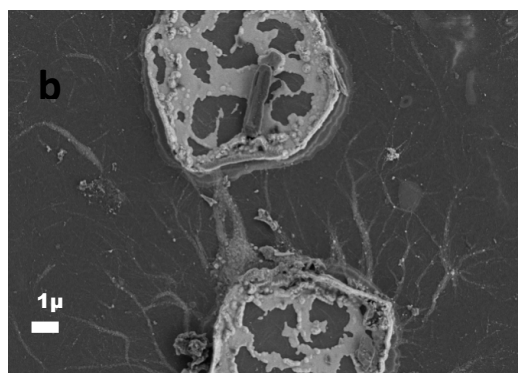
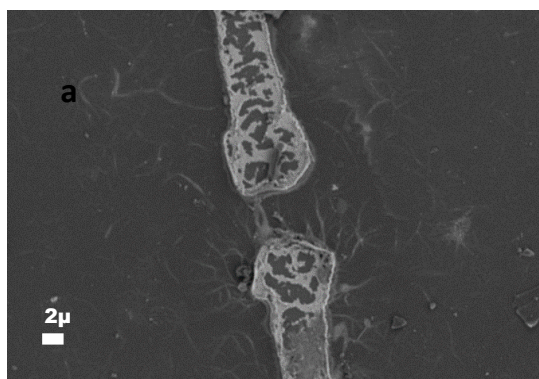


Figure S5a 15MHz; 10V_{pp} ; **Figure S5b** higher magnification of the same image