

Lanthanide-dipicolinic Acid Coordination Driven Micelles with Enhanced Stability and Tunable Function

Junyou Wang,^a R. H. Marleen de Kool,^a Aldrik H. Velders^{a,b,*}

(a) Laboratory of BioNanoTechnology, Wageningen University, Dreijenplein 6, 6703 HB Wageningen, The Netherlands

(b) Interventional Molecular Imaging Laboratory, Department of Radiology, Leiden University Medical Centre, Leiden, The Netherlands.

*To whom correspondence should be addressed:

E-mail: aldrik.velders@wur.nl

This PDF file includes:

1. CONTIN analysis of micellar size and size distribution , Figure S1.
2. TEM image of the Eu(III) incorporated micelles, Figure S2.

Figure S1

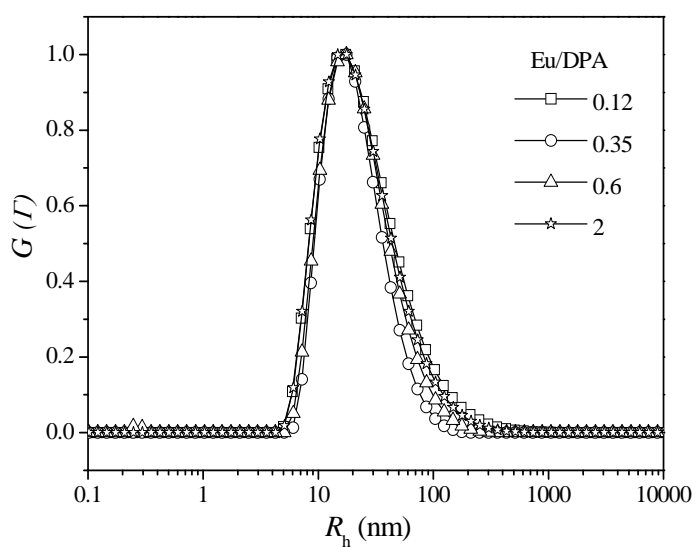


Figure S1 CONTIN analysis of micellar size and size distribution at different Eu/DPA mixing ratio.

Figure S2

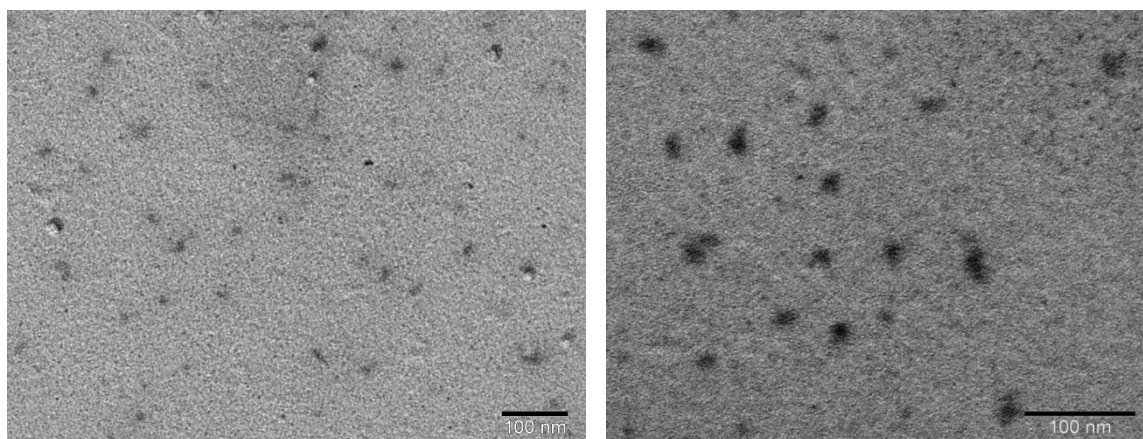


Figure S2 TEM image of the Eu-BP micelles prepared at a Eu/DPA ratio of 1/3. The dots only present the micellar core as the PEO corona provides insufficient contrast to be visible.