

Supplementary Content

Fig. S1. The ^{13}C NMR (A) and ^1H NMR (B) spectra of the carbohydrate produced from sucrose and lactose from the purified recombinant *L. mesenteroides* levansucrase.

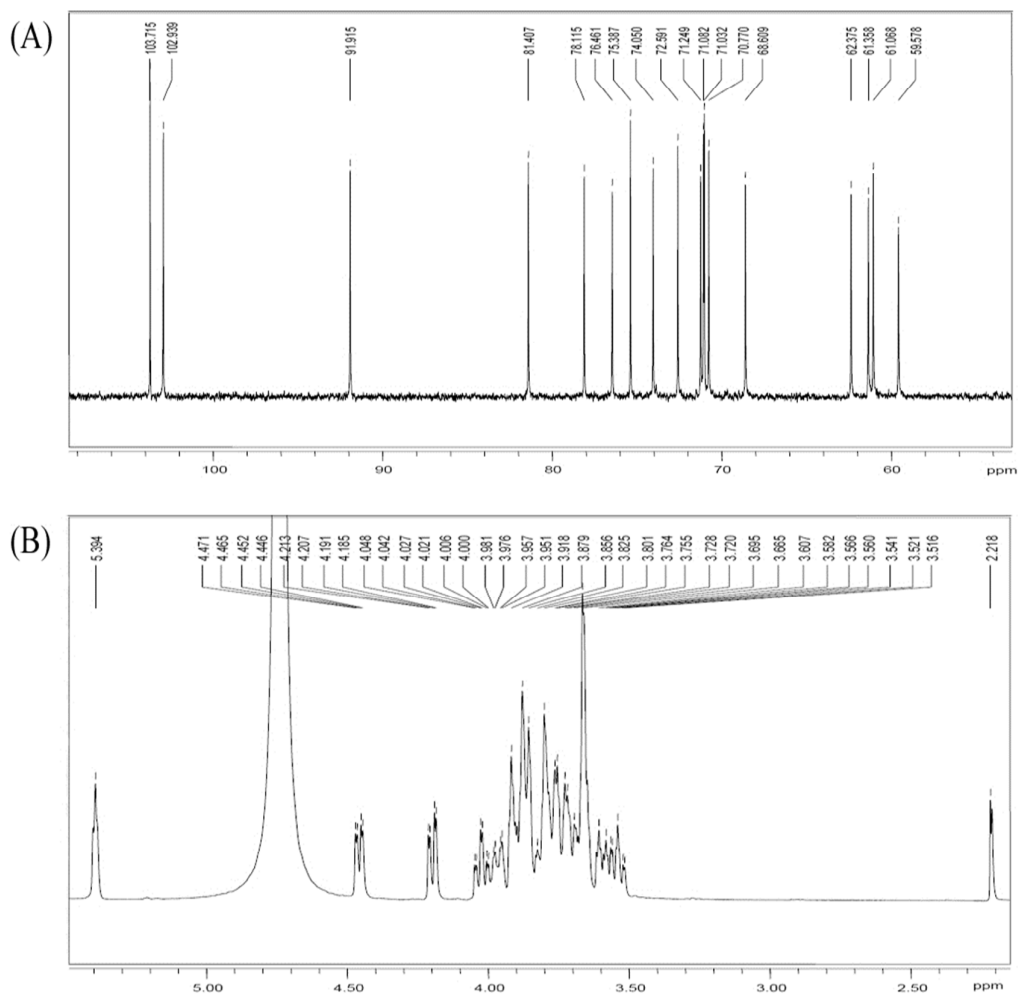


Fig. S2. The ^1H - ^1H COSY (A) and ^1H - ^{13}C HSQC (B) spectra of the carbohydrate produced from sucrose and lactose by the purified recombinant *L. mesenteroides* levansucrase.

