

Supporting information

**Solvent Mediated Structural Transition of KI_4K Self-Assemblies: from
Nanotubes to Nanofibrils**

Yurong Zhao,[†] Li Deng,[†] Jiqian Wang,[†] Hai Xu,^{*,†} and Jian R. Lu^{*,‡}

[†]Centre for Bioengineering and Biotechnology, China University of Petroleum (East China), 66 Changjiang
West Road, Qingdao 266580, China.

[‡]Biological Physics Group, School of Physics and Astronomy, The University of Manchester, Manchester M13
9PL, United Kingdom.

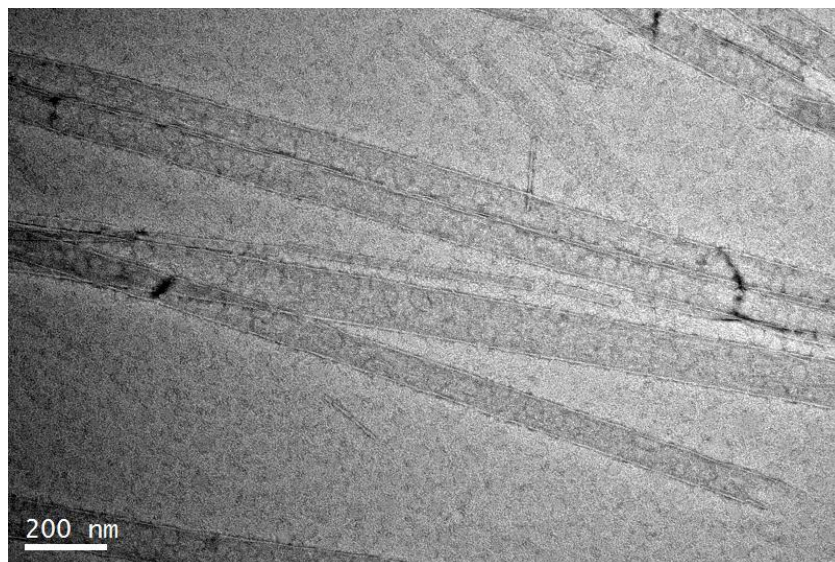


Figure S1. Negative-staining TEM image of the KI₄K self-assemblies in the mixture of water and acetonitrile (10% (vol/vol) acetonitrile).

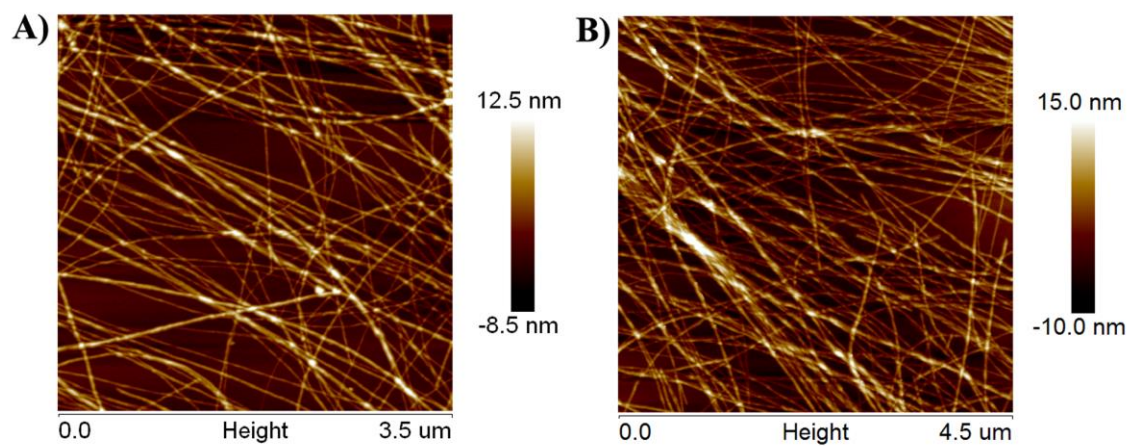


Figure S2. AFM images of the KI₄K assemblies in (A) 80% (vol/vol) methanol and (B) methanol. Note that the peptide concentration was fixed at 16mM and the peptide solution was incubated for 7 days before further characterization.

Table S1. The best fitted parameters for the SANS curves shown in Figure 4.

Model and Parameter	Solvent	Water	20% (vol/vol) Acetonitrile	80% (vol/vol) Acetonitrile
		LamellarModel+ HollowCylinderModel	LamellarModel	HollowCylinderModel
Fitting Model				
p1_background		0.02	---	0.019
p1_radius ^{a)}		450 Å	---	42 Å
p1_core_radius		431 Å	---	20 Å
p1_length		>1000 Å	---	>1000 Å
p1_axis_ratio		---	---	---
p1_scale		0.00015	---	0.027
p1_sldCyl		3.8e-06	---	4e-06
p1_sldSlov		6.35e-06	---	5.206e-06
p2_background		0.02	0.02	---
p2_bi_thick		19 Å	20 Å	---
p2_scale		0.033	0.018	---
p2_sld_bi		3.8e-06	4e-06	---
p2_sld_sol		6.35e-06	6.064e-06	---

Note: a) the diameter was fixed as 90 nm during the fitting.