

Supporting Information

Porous Silicon's Photoactivity in Water: Insights into Environmental Fate

Kyle J. Moor,¹ Ezra L. Cates,^{2,} Jae-Hong Kim^{1,*}*

¹ Department of Chemical & Environmental Engineering, School of Engineering & Applied Science, Yale University, New Haven, CT, 06511

² Department of Environmental Engineering & Earth Sciences, College of Engineering and Science, Clemson University, Clemson, SC, 29634

Number of pages: 3

Number of figures: 3

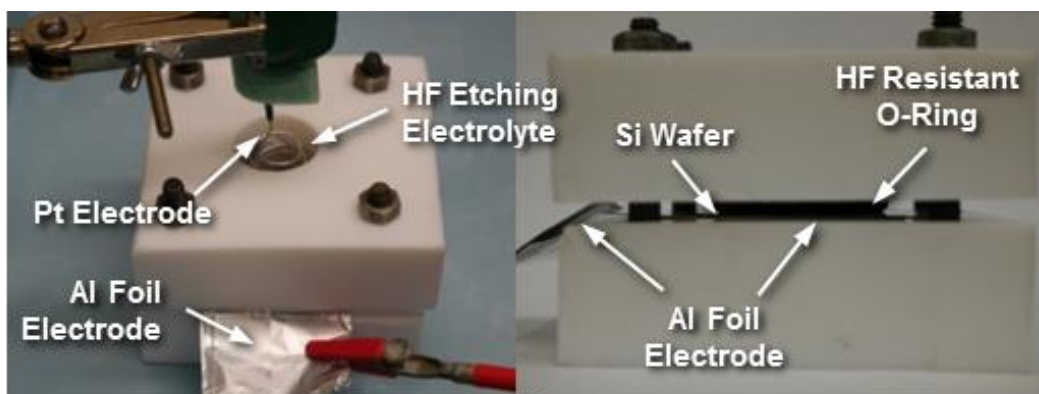


Figure S1. Photographic images of the etch cell used for pSi preparation.

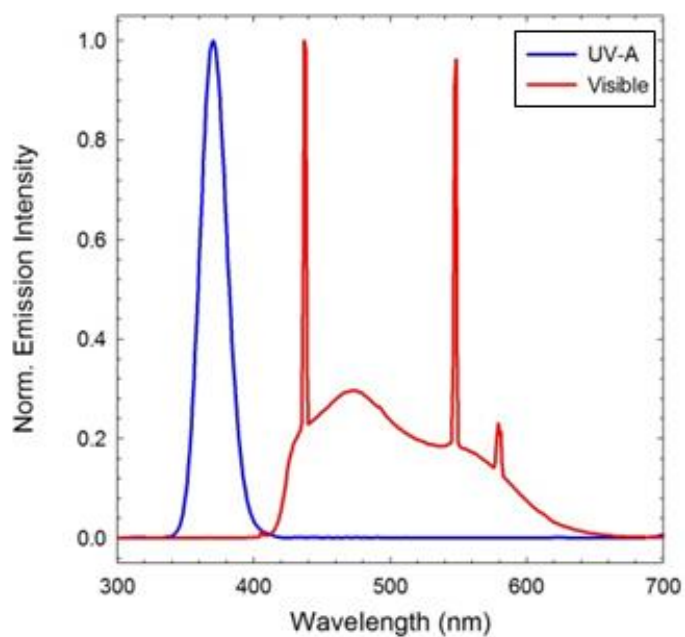


Figure S2. Emission spectra of visible (red line) and UV-A (blue line) source lights used for photochemical experiments.

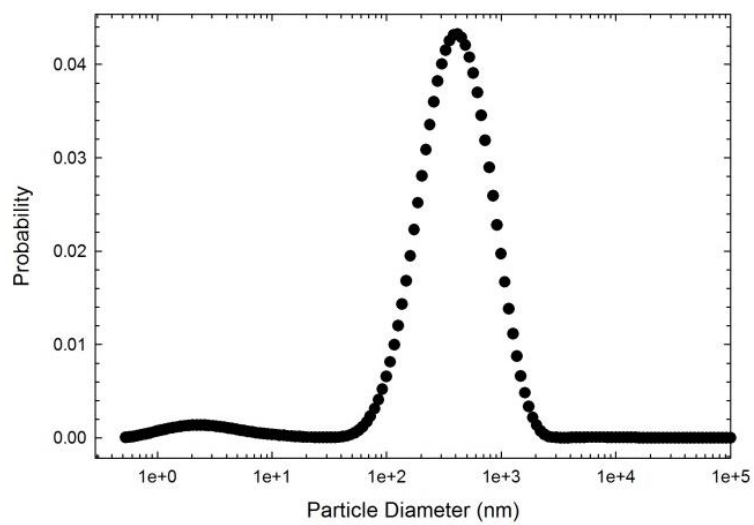


Figure S3. DLS size distribution for a representative aqueous pSi sample.