

## SUPPORTING INFORMATION

### **Effective Biological DeNO<sub>x</sub> of Industrial Flue Gas by the Mixotrophic Cultivation of an Oil-Producing Green Alga *Chlorella* sp. C2**

Weixian Chen<sup>1,3#</sup>, Shanshan Zhang<sup>1#</sup>, Junfeng Rong<sup>2</sup>, Xiang Li<sup>4</sup>, Hui Chen<sup>1</sup>, Chenliu He<sup>1</sup>,  
Qiang Wang<sup>1,\*</sup>

<sup>1</sup>Key Laboratory of Algal Biology, Institute of Hydrobiology, Chinese Academy of Sciences,  
Wuhan 430072, Hubei, China

<sup>2</sup>SINOPEC Research Institute of Petroleum Processing, Beijing, China

<sup>3</sup>University of Chinese Academy of Sciences, Beijing 100094, China

<sup>4</sup>College of Life Sciences, Northeast Forestry University, Harbin 150040, Heilongjiang,  
China

\* Correspondence: Wang, Qiang, Key Laboratory of Algal Biology, Institute of Hydrobiology,  
Chinese Academy of Sciences, 7 South Donghu Rd., Wuhan, Hubei Province, 430072 China,  
e-mail: [qwang@ihb.ac.cn](mailto:qwang@ihb.ac.cn).

# These authors contributed equally to this work

The number of pages is 2, and the number of figures is 1.

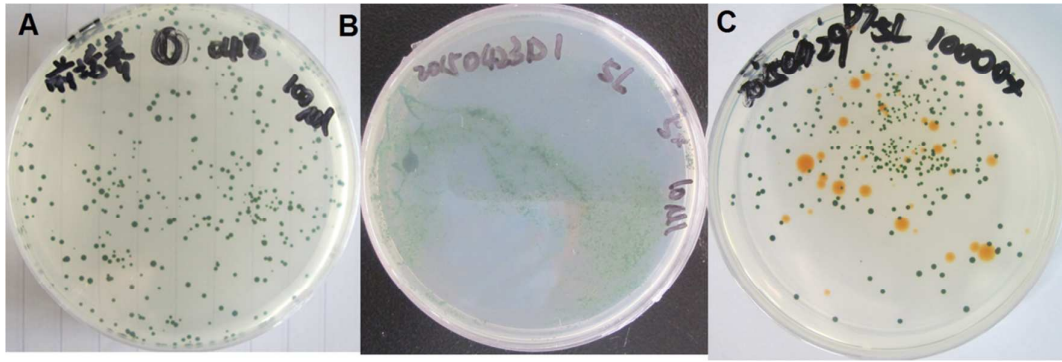


Figure S1. The detection of microbial contamination in the 5 L culture systems with very light contamination by the end of cultivation.

The *Chlorella* sp. C2 cultures were randomly sampled and spread on regular BG11 solid plate to identify the possible microbial contaminations after more than 10 days of incubation. (A), Pre-culture sample for inoculation (April 18, 2015); (B), sample at the first day of cultivation (April 23, 2015); (C), sample with very light contamination by the end of cultivation (April 29, 2015).