

## **Supporting Information:**

### **Quantitation of Thioproline in Grape Wine by Isotope-Dilution**

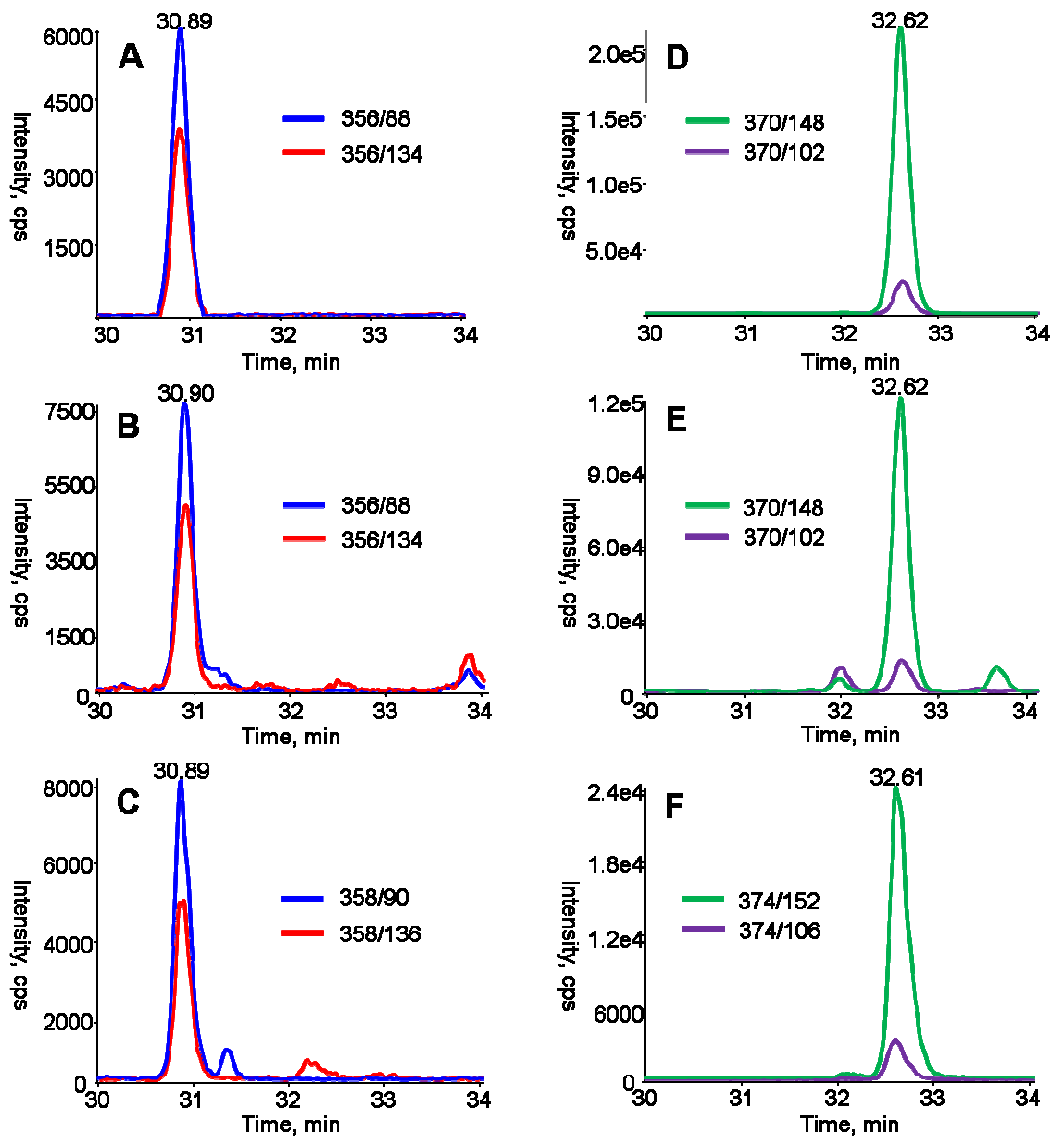
### **Liquid Chromatography–Tandem Mass Spectrometry**

Jingjing Liu<sup>†</sup>, Xiangpeng Meng<sup>‡</sup>, and Wan Chan<sup>\*,†,‡</sup>

<sup>†</sup>Environmental Science Programs and <sup>‡</sup> Department of Chemistry, The Hong Kong University of Science and Technology, Clear Water Bay, Kowloon, Hong Kong SAR, China

\* Corresponding author

Tel: 852-2358-7370; Fax: 852-2358-1594; Email: [chanwan@ust.hk](mailto:chanwan@ust.hk)



**Figure S1.** Representative chromatograms from LC-MS/MS analysis of authentic standards of (A) **1** and (D) **2**; as well as (B) **1**, (C) **1**-d<sub>2</sub>, (E) **2**, and (F) **2**-d<sub>4</sub> in a typical red wine sample. The Fmoc derivative of **1** and **2** were eluted at 30.9 and 32.6 min, respectively.