

Supplementary Material for

Stability analysis of glutamic acid linked peptides coupled to NOTA through different chemical linkages

Lixin Lang, Ying Ma, Dale O. Kiesewetter and Xiaoyuan Chen*

Laboratory of Molecular Imaging and Nanomedicine (LOMIN), National Institute of Biomedical Imaging and Bioengineering (NIBIB), National Institutes of Health (NIH), Bethesda, MD 20892-2281, USA

* Correspondence: shawn.chen@nih.gov

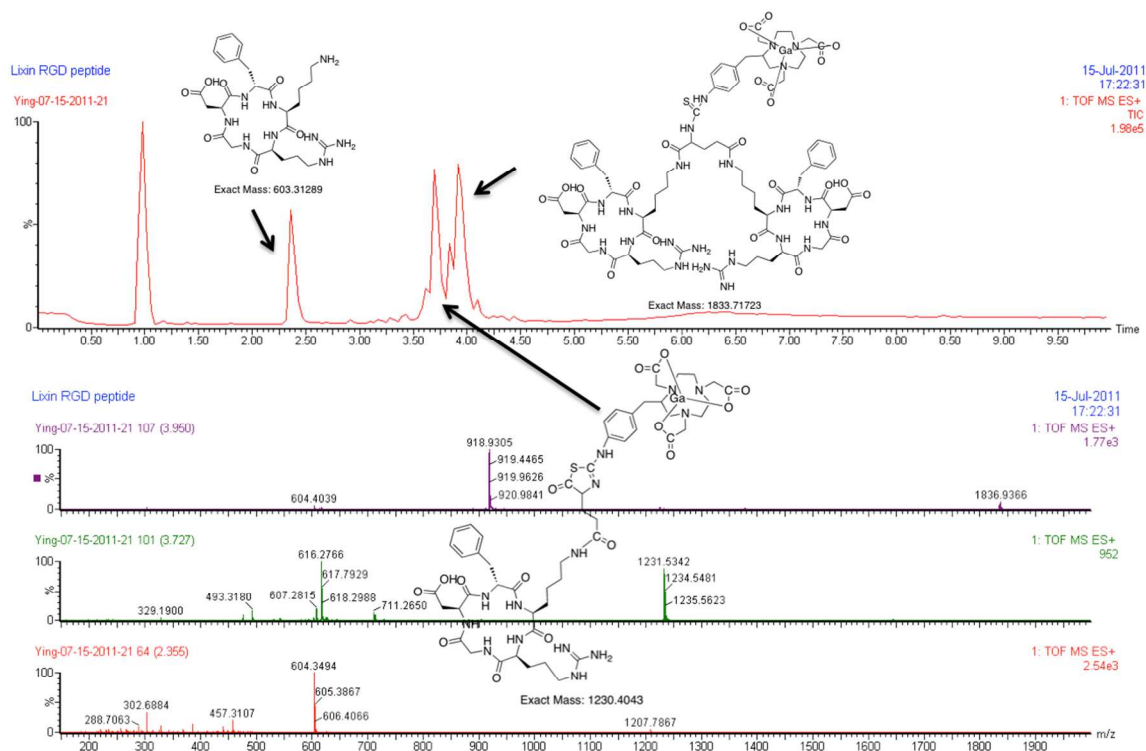


Figure S1. LC-MS analysis of Possible side products of Ga-NOTA-Bn-NCS-E[c(RGDfK)]₂ (15) hydrolysis. The peak at 3.95 min with the mass of 1836.9366 is the parent compound Ga-NOTA-Bn-NCS-E[c(RGDfK)]₂ (15). The peak at 3.73 min with the mass of 1231.5342 is the parent compound minus a c(RGDfK) monomer and a water molecule (compound 16). The peak at 2.35 min is c(RGDfK) monomer (5).