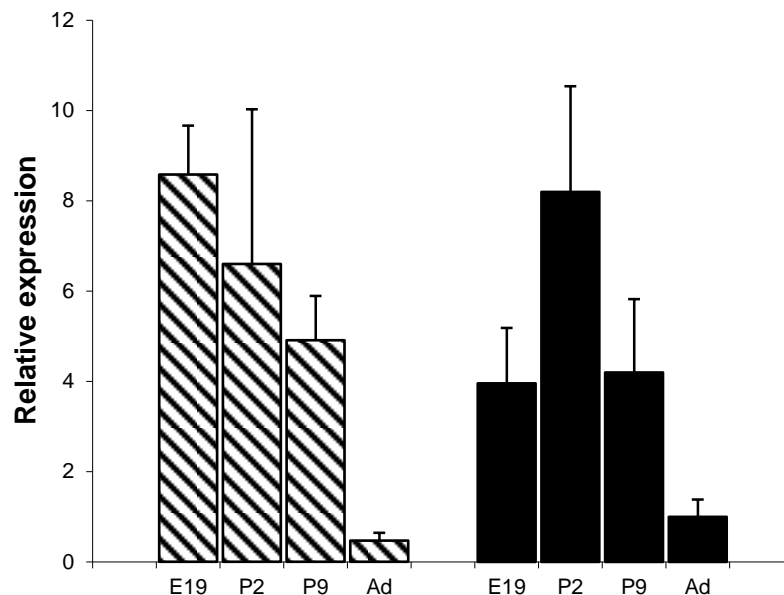


Figure S1: Developmental analysis of LRP2 transcript levels in rat choroid plexuses

RNAs were prepared from choroid plexuses sampled at four developmental stages from the lateral ventricle (hatched bars) and the 4th ventricle (black bars) of rat brain, and RTPCR was performed as described in Kratzer et al.¹ Forward and reverse primer sequences for LRP2 amplification were gaggtaaaggatgctgtggctgtgg and tcctagagagctggcgaggc, respectively. Results were expressed relative to the bacterial AraB gene used as an external standard. Values in arbitrary units are shown as mean \pm SD, n = 3 to 4 (see¹ for details on calculation). Lat V and 4th V: choroid plexuses of the lateral and fourth ventricle, respectively; E19: 19-day-old embryo; P2 and P9: 2-day-old and 9-day-old rat, respectively; ad: adult rat.



1. Kratzer, I.; Vasiljevic, A.; Rey, C.; Fevre-Montange, M.; Saunders, N.; Strazielle, N.; Gherzi-Egea, J. F. Complexity and developmental changes in the expression pattern of claudins at the blood-CSF barrier. *Histochem Cell Biol* **2012**, *138*, 861-79.