

Supporting Information

MOF-Embedded Bifunctional Composite Nanofiber Membranes with Tunable Hierarchical Structure for High-Efficiency PM_{0.3} Purification and Oil/Water Separation

Yajian Li, Ding Yuan^{}, Qian Geng, Xue Yang, Huizhi Wu, Yuze Xie, Liming Wang, Xin Ning, Jinfang Ming^{*}*

Industrial Research Institute of Nonwovens & Technical Textiles, Shandong Center for Engineered Nonwovens (SCEN), College of Textiles & Clothing, Qingdao University, Qingdao 266071, Shandong, P. R. China

* E-mail: yuanding@qdu.edu.cn (Ding Yuan); mingjinfang@qdu.edu.cn (Jinfang Ming)

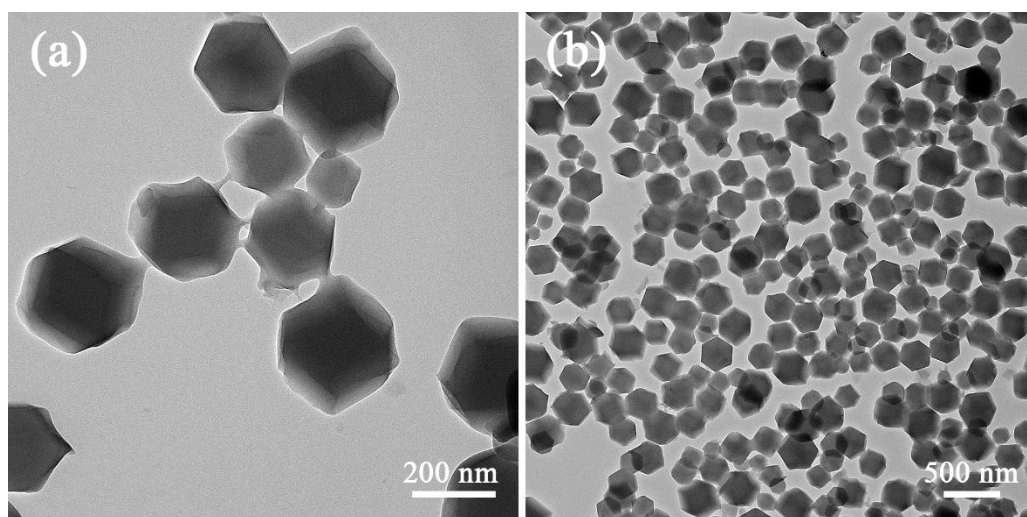


Figure S1. (a, b) TEM images of ZIF8 NPs.

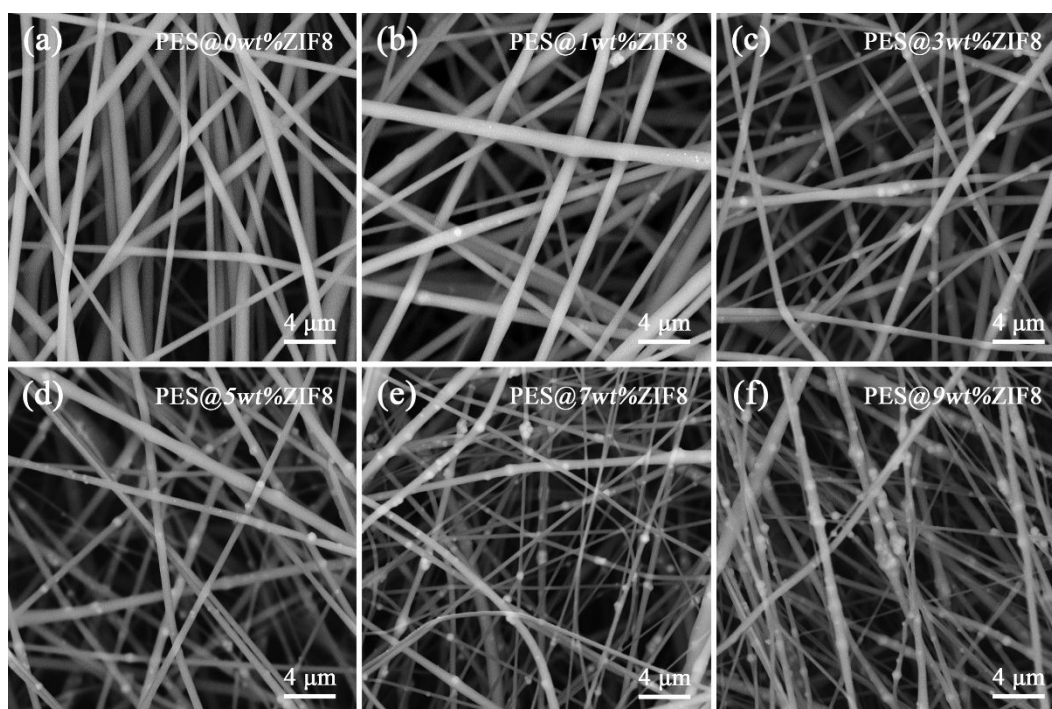


Figure S2. SEM images of the PES@ x wt%ZIF8 membrane with ZIF8 NPs concentration of 0 wt% (a), 1 wt% (b), 3 wt% (c), 5 wt% (d), 7 wt% (e), and 9 wt% (f), respectively.

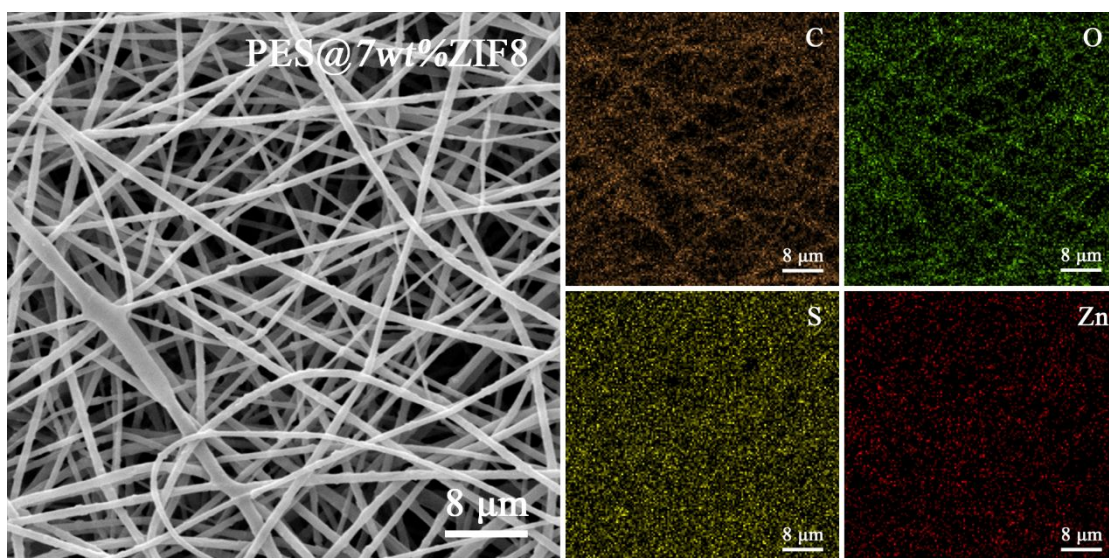


Figure S3. SEM and the corresponding element scanning images of PES@7wt%ZIF8 membrane, showing the distribution of C, O, S and Zn.

Table S1. Pressure drop and porosity of PES@*xwt%*ZIF8 membrane.

Sample	ZIF8 concentration (wt%)	Pressure drop (Pa)	Porosity (%)
PES@ <i>xwt%</i> ZIF8	0	1	87.6 ± 0.7
	1	2	86.1 ± 1.3
	3	2	85.9 ± 1.6
	5	2	83.2 ± 2.1
	7	3	80.2 ± 1.4
	9	3	78.5 ± 1.7

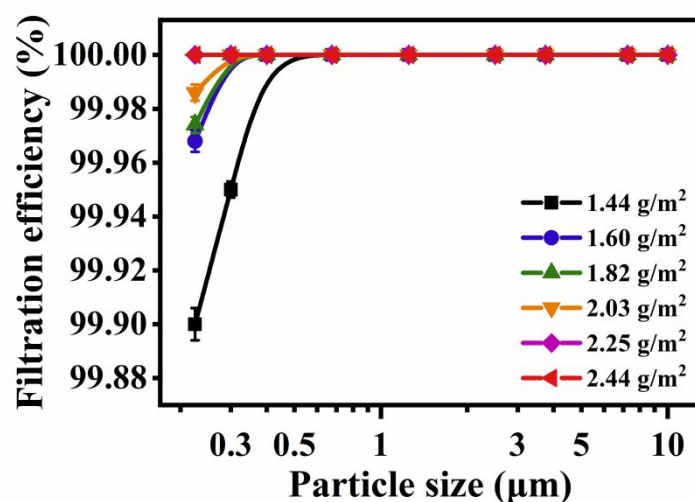


Figure S4. Filtration efficiency curves of PES@7wt%ZIF8-PSA/PES filter with different basis weight for NaCl airborne particles with various sizes.

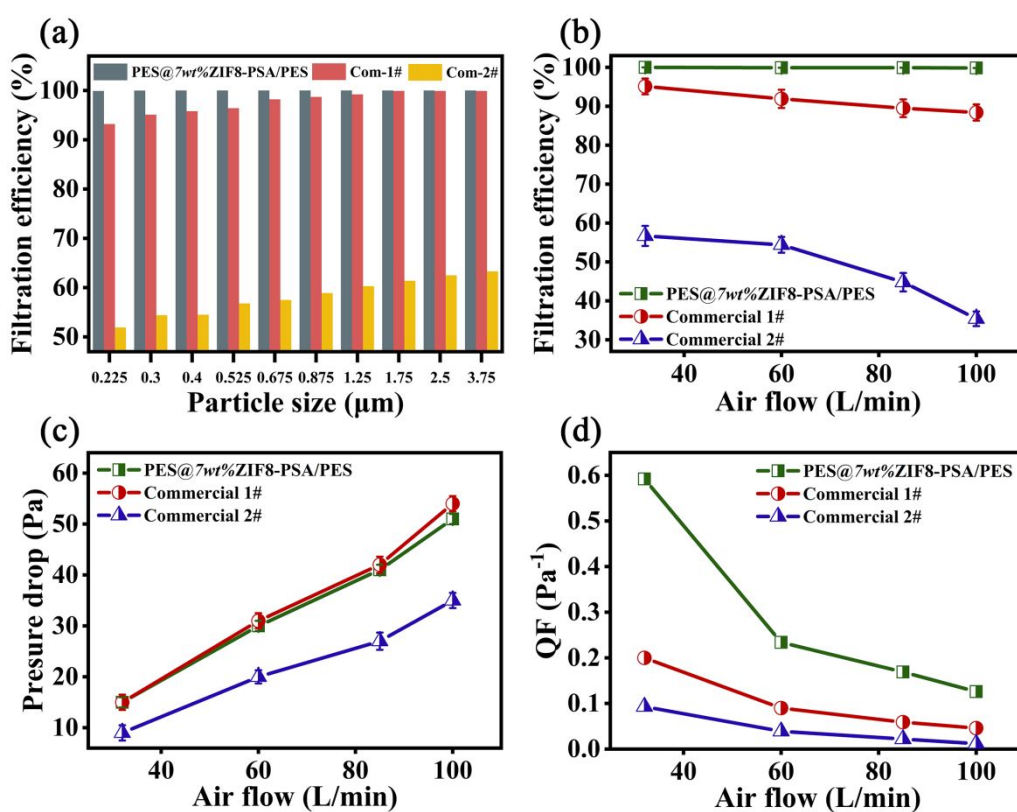


Figure S5. (a) Filtration efficiency of the PES@7wt%ZIF8-PSA/PES membranes and commercial filter materials for NaCl airborne particles with various sizes. (b)-(d) Filtration

performance of the PES@7wt%ZIF8-PSA/PES membrane and commercial filter materials for NaCl particles under different airflows.

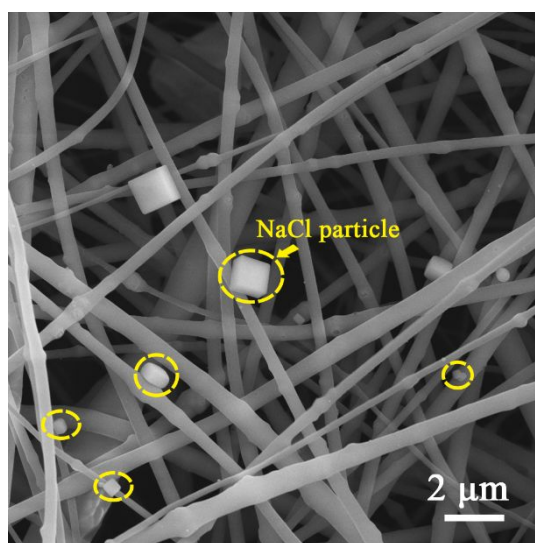


Figure S6. SEM image of PES@7wt%ZIF8-PSA/PES membrane after filtration.

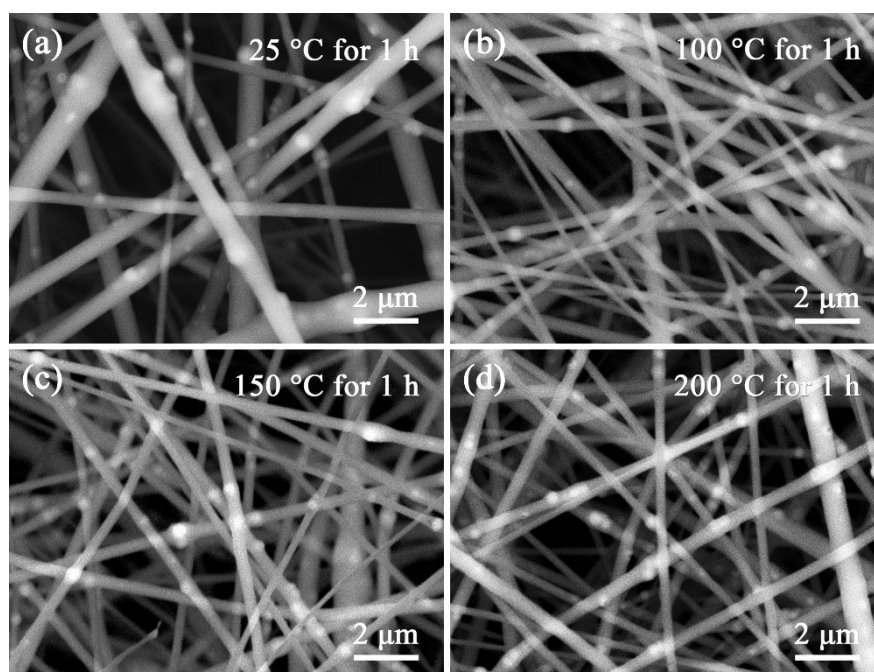


Figure S7. SEM images of PES@7wt%ZIF8-PSA/PES membrane treated at different temperatures over 1 h.