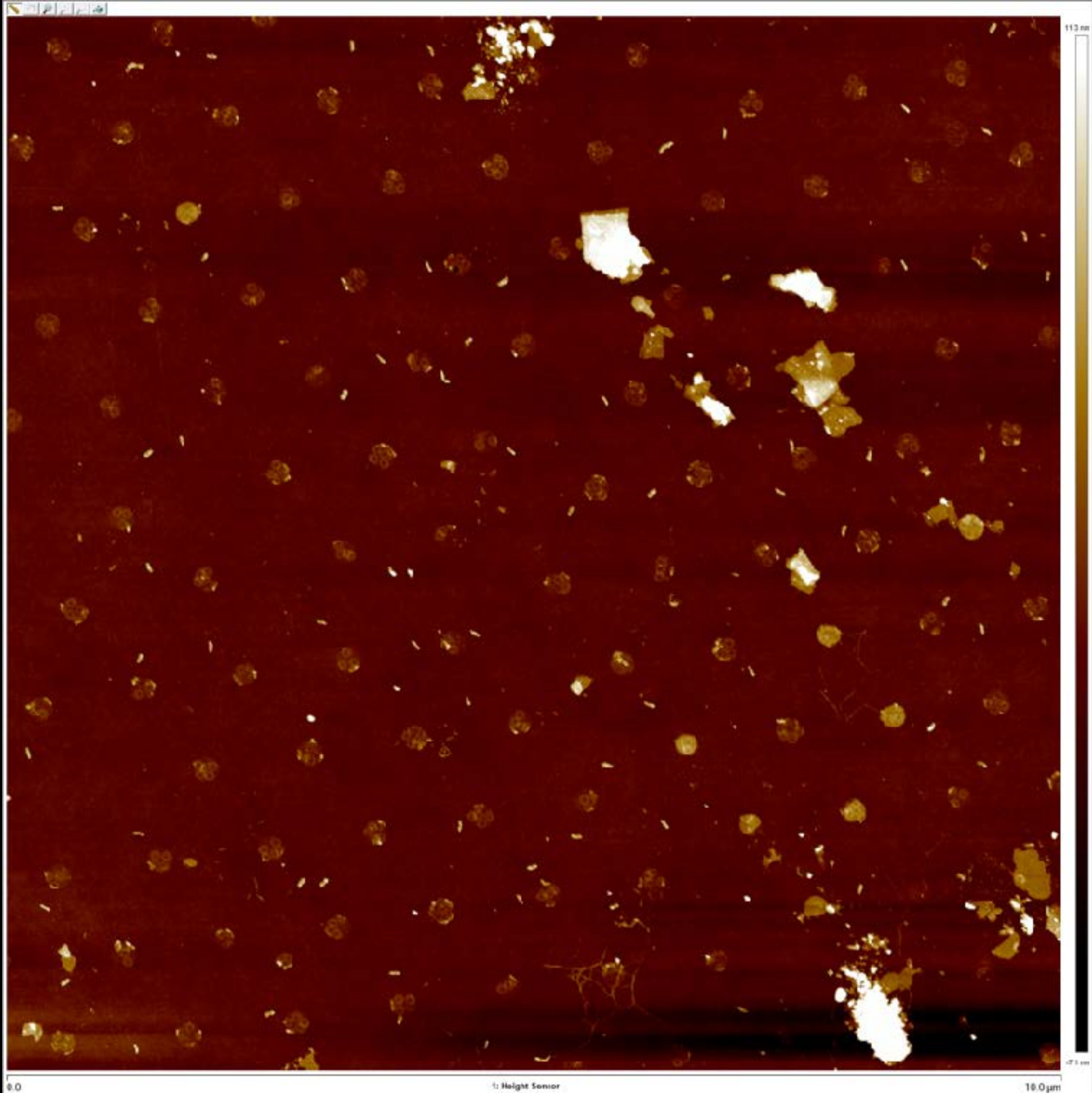


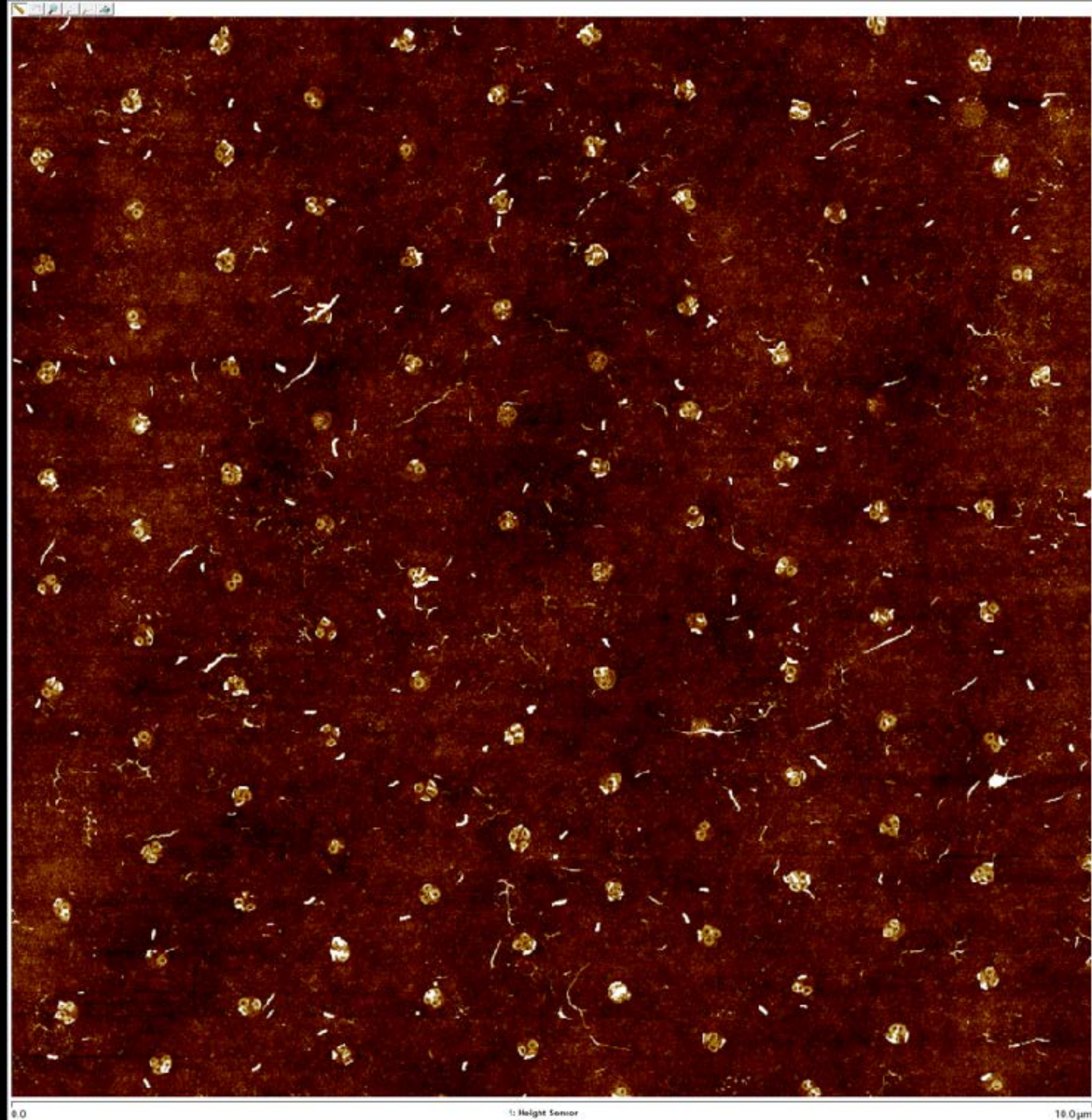
Death Star Occupancy

1000 nm, 700 nm, 500 nm, 400 nm, 350 nm, 200 nm

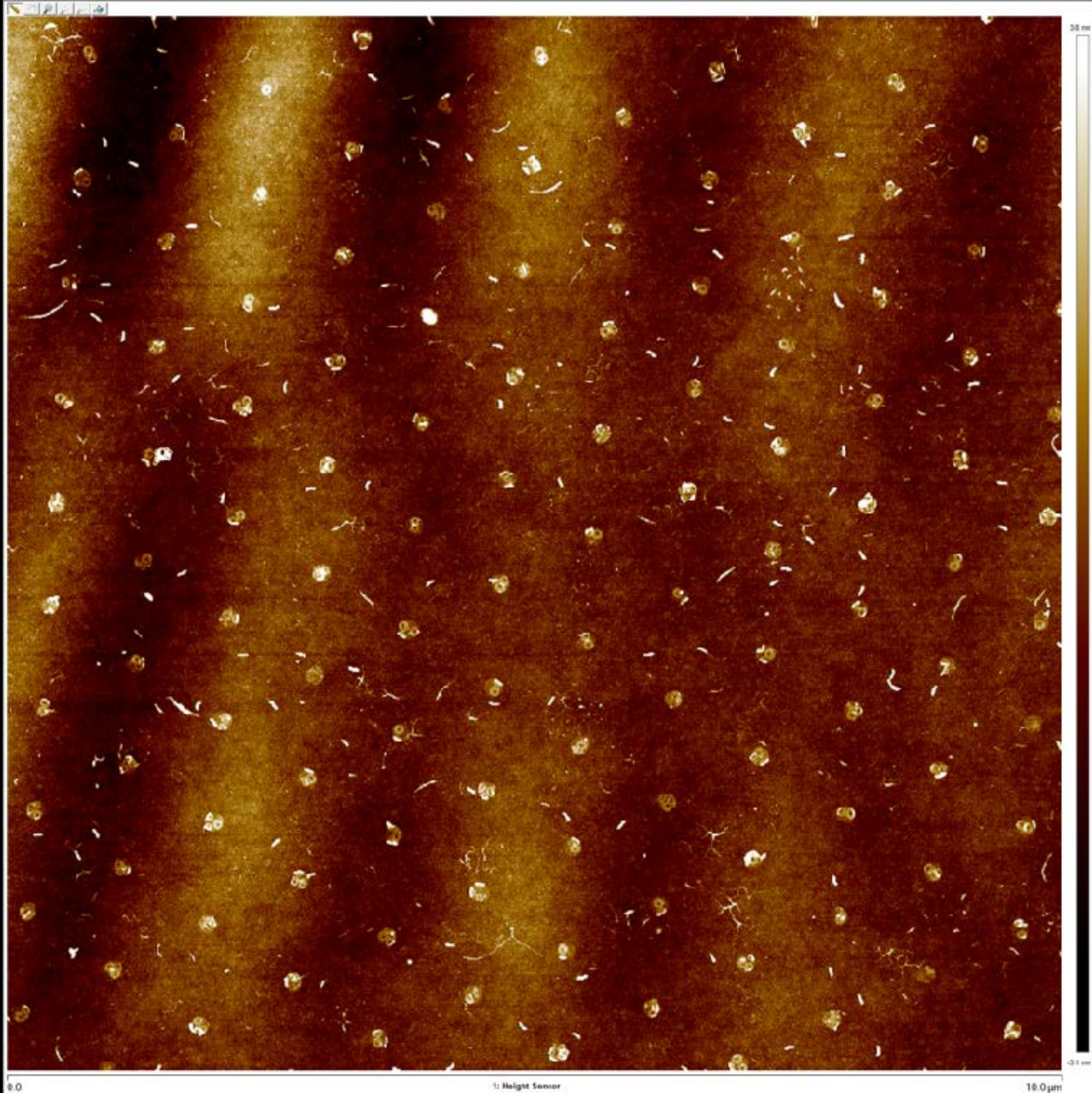
1000 nm



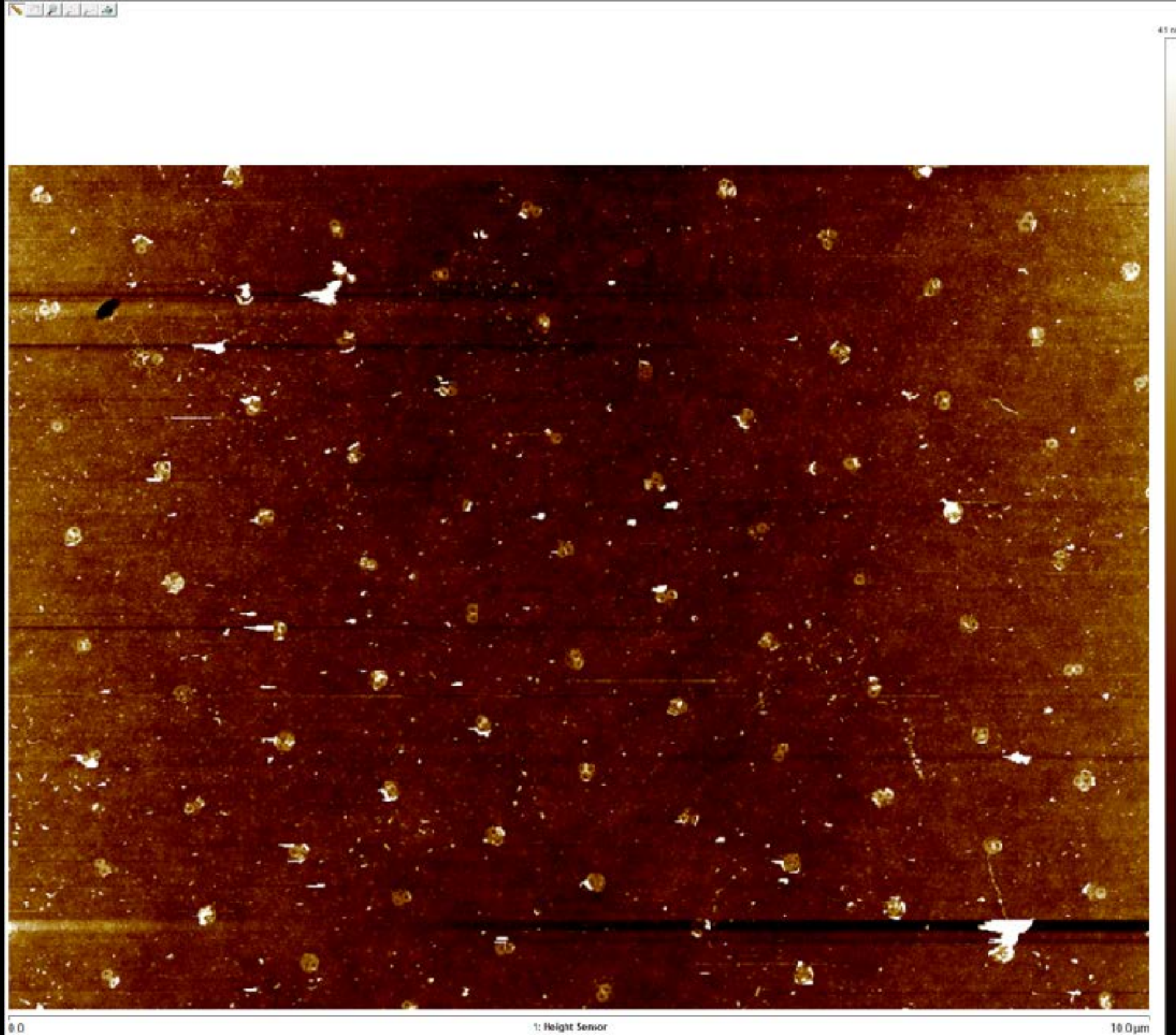
1000 nm



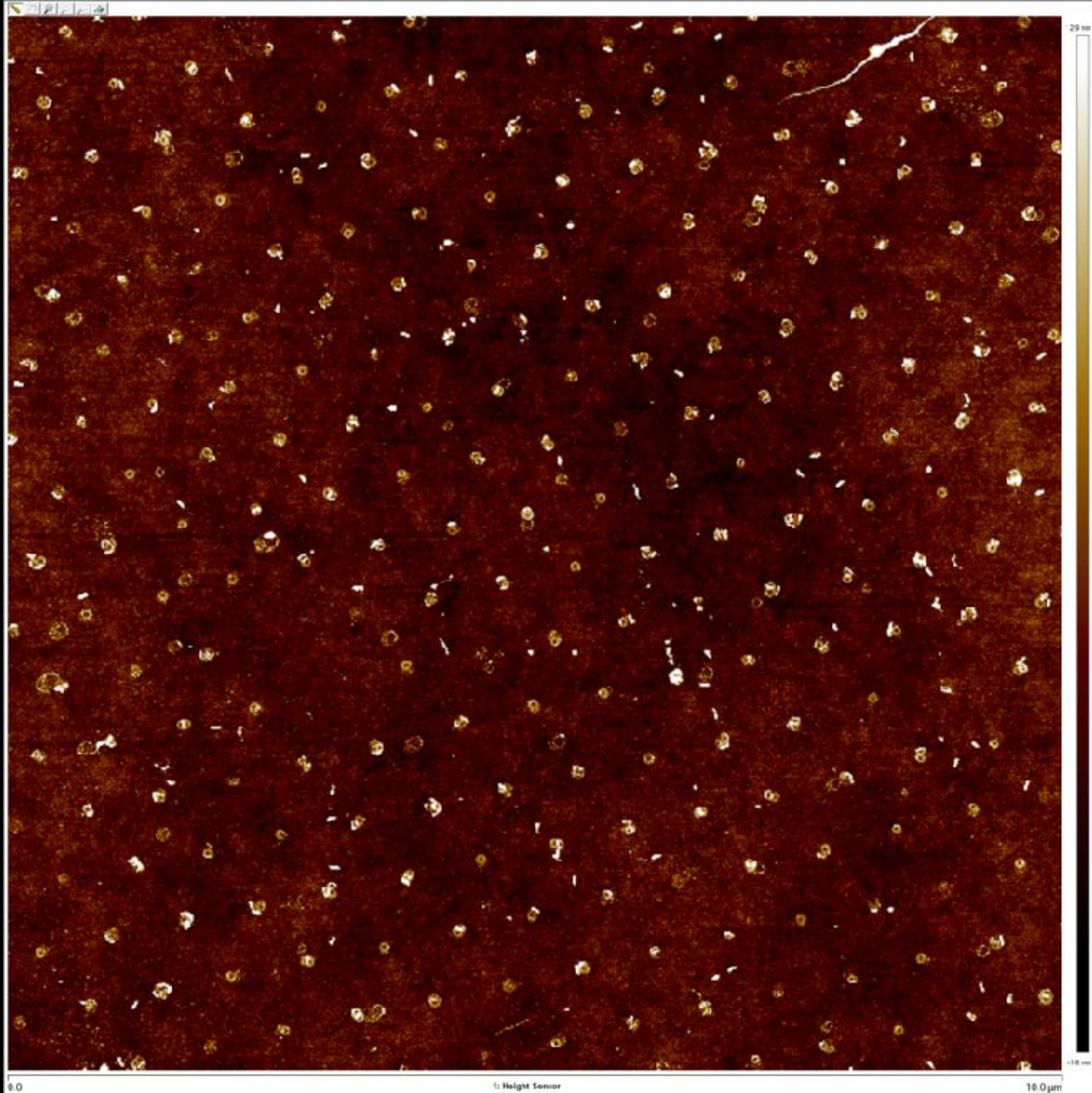
1000 nm



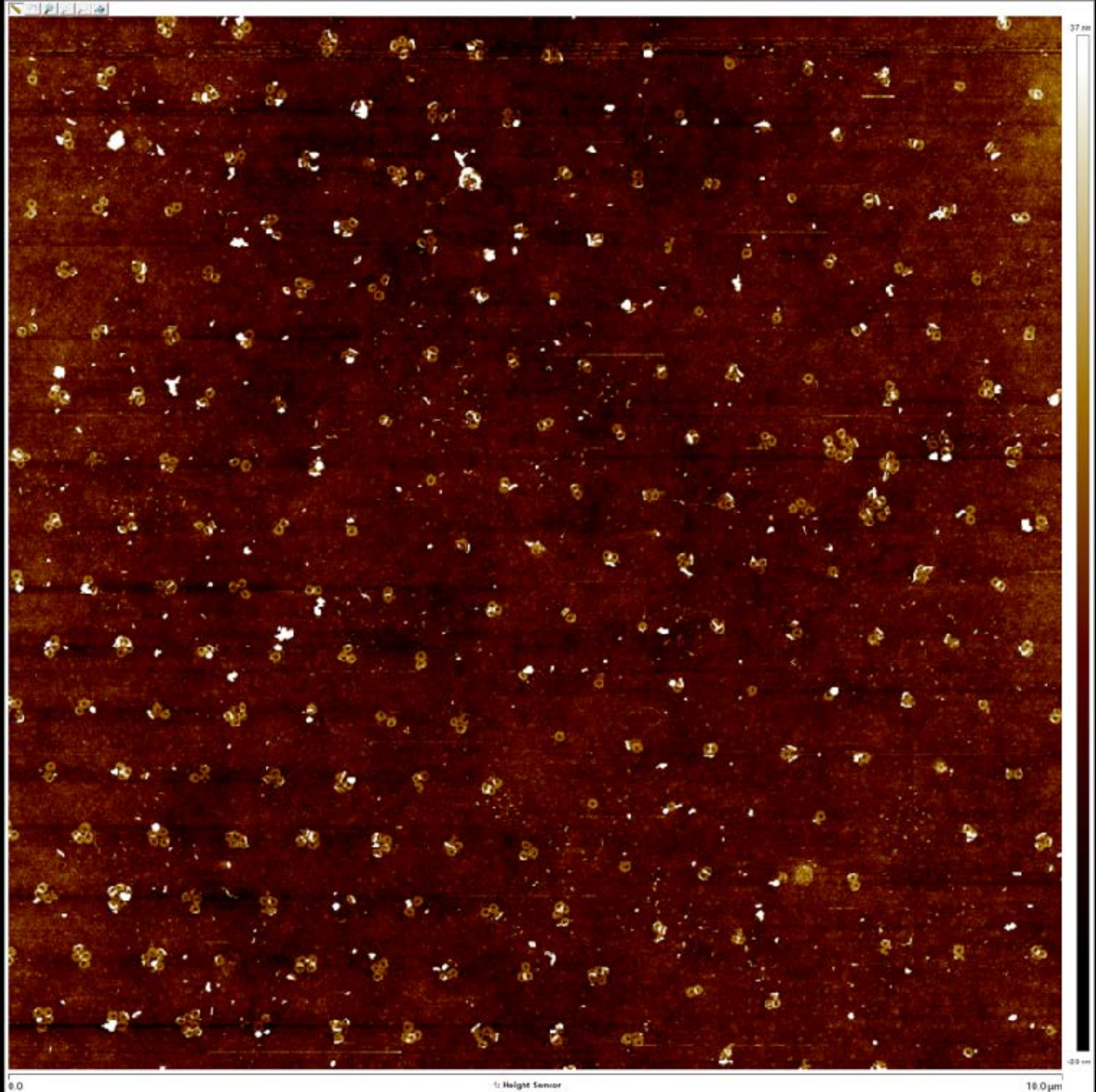
1000 nm



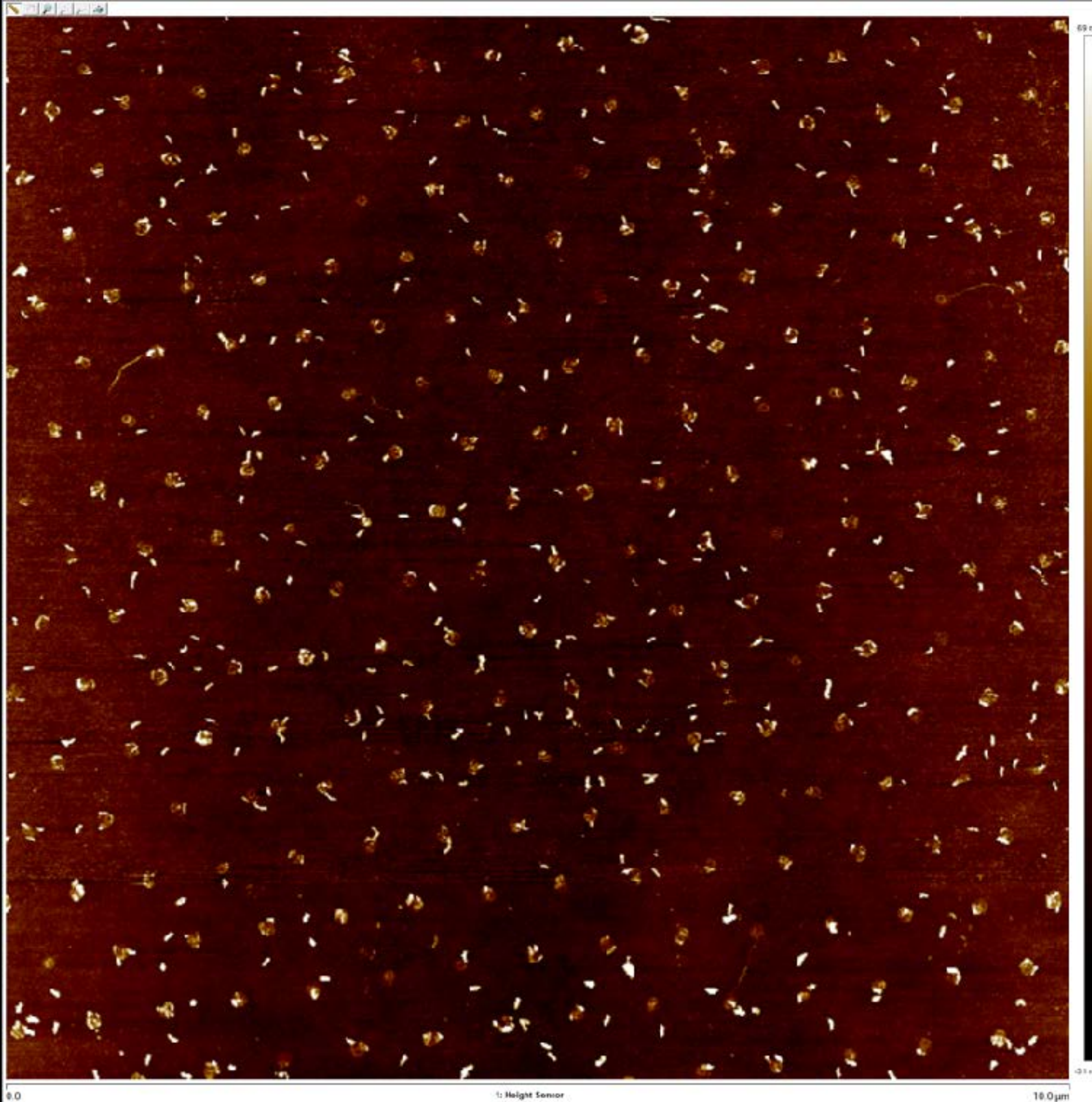
700 nm



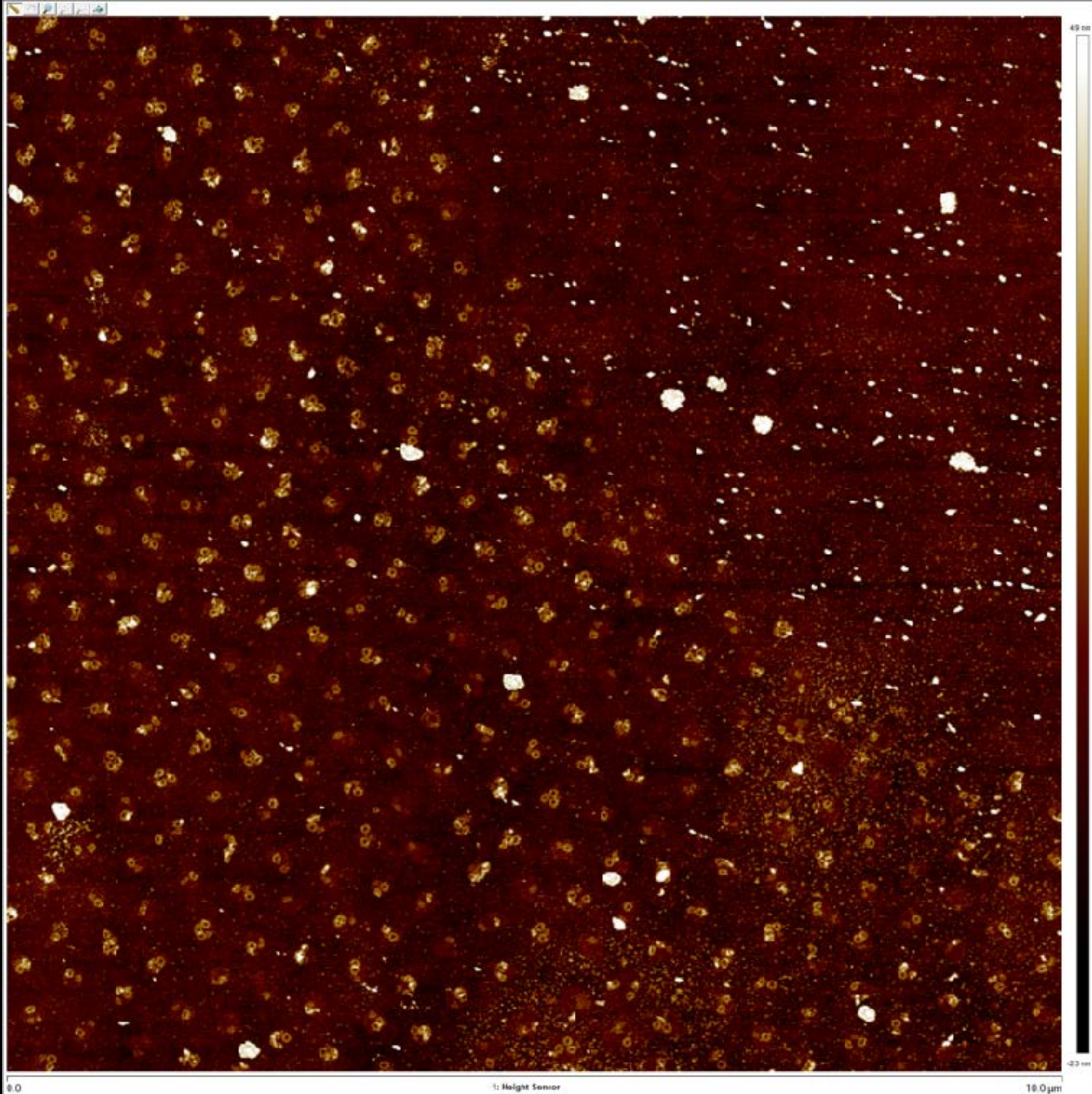
700 nm



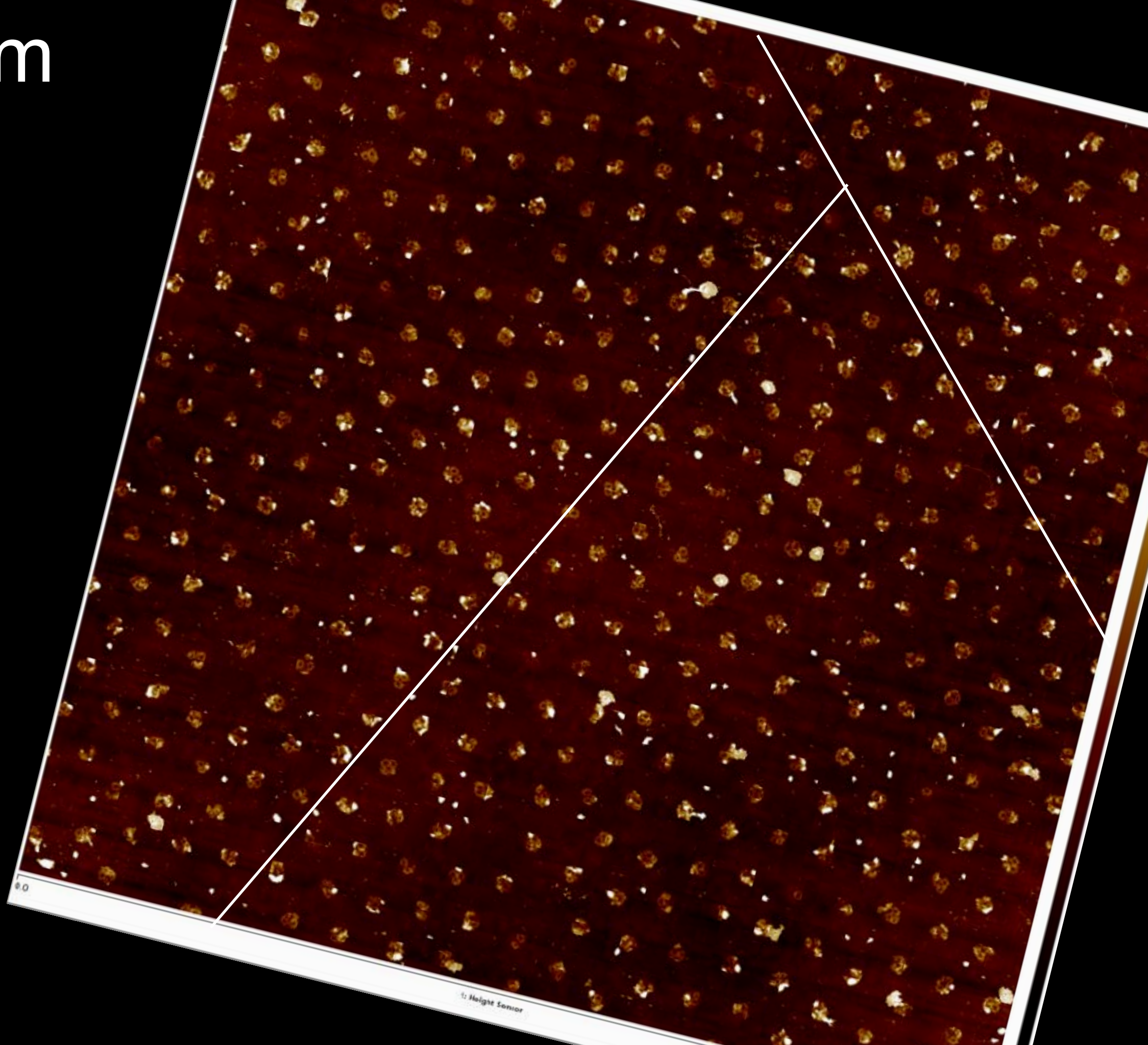
700 nm



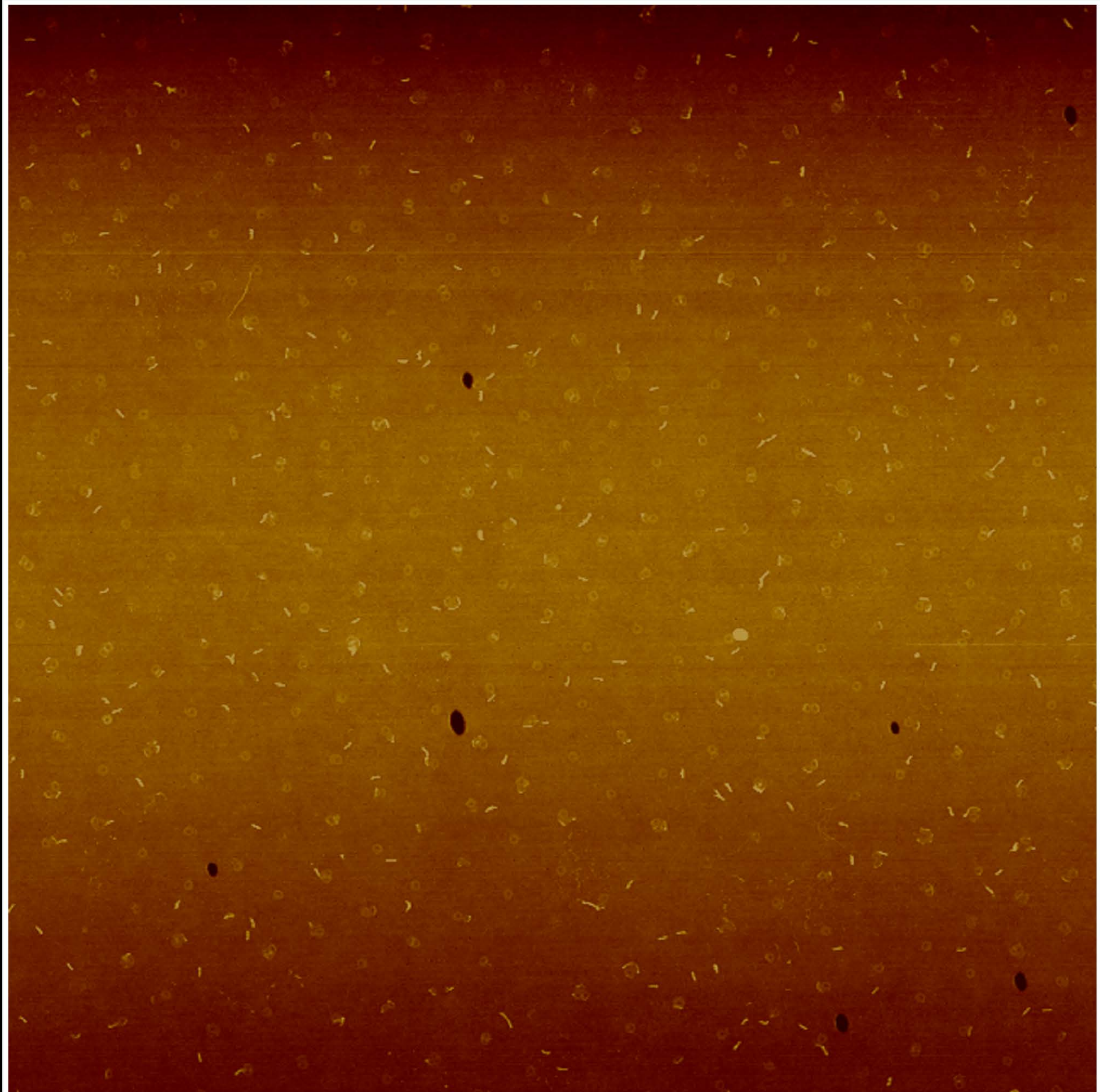
500 nm



500 nm



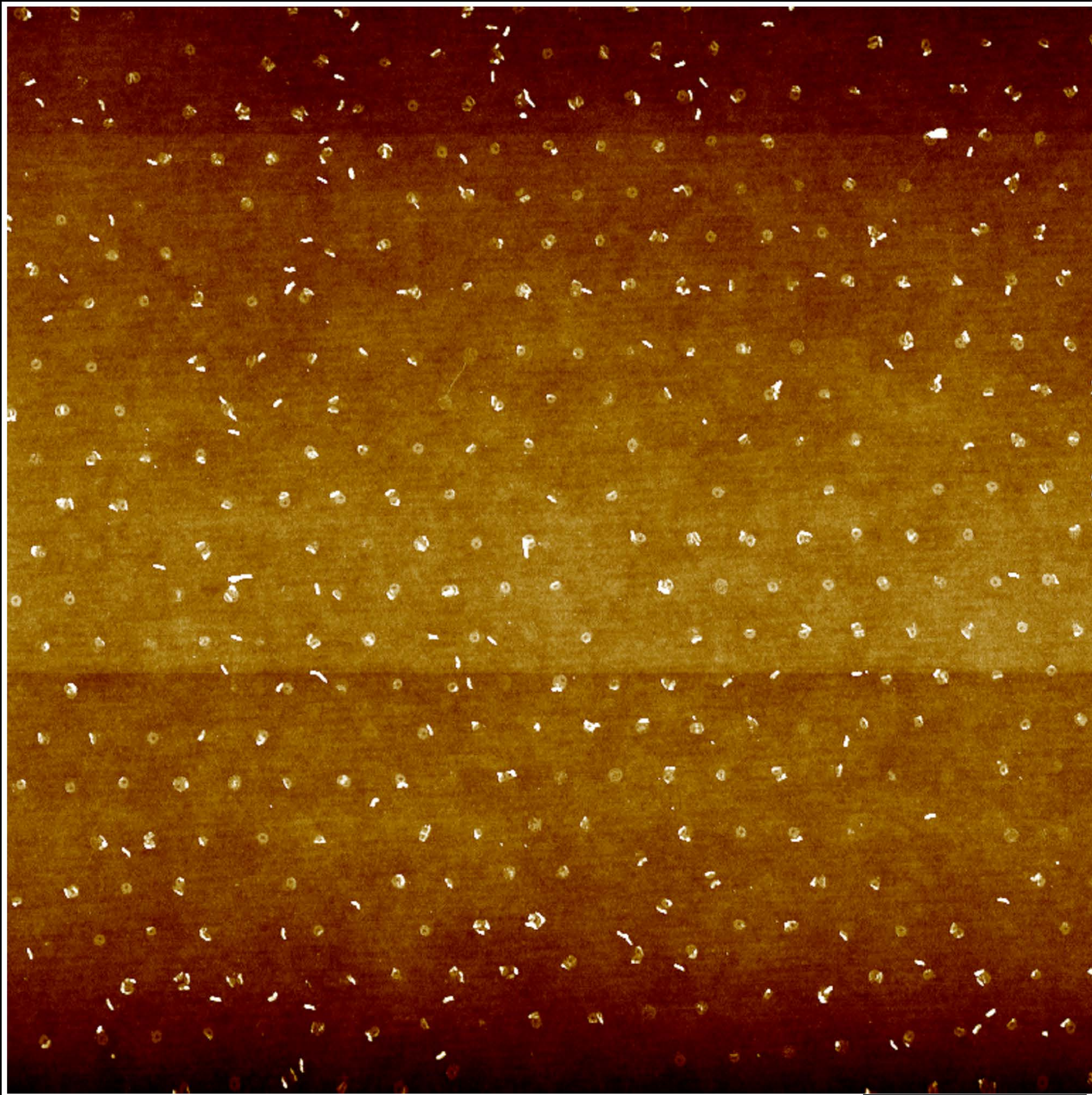
500 nm



Height Sensor

2.0 μm

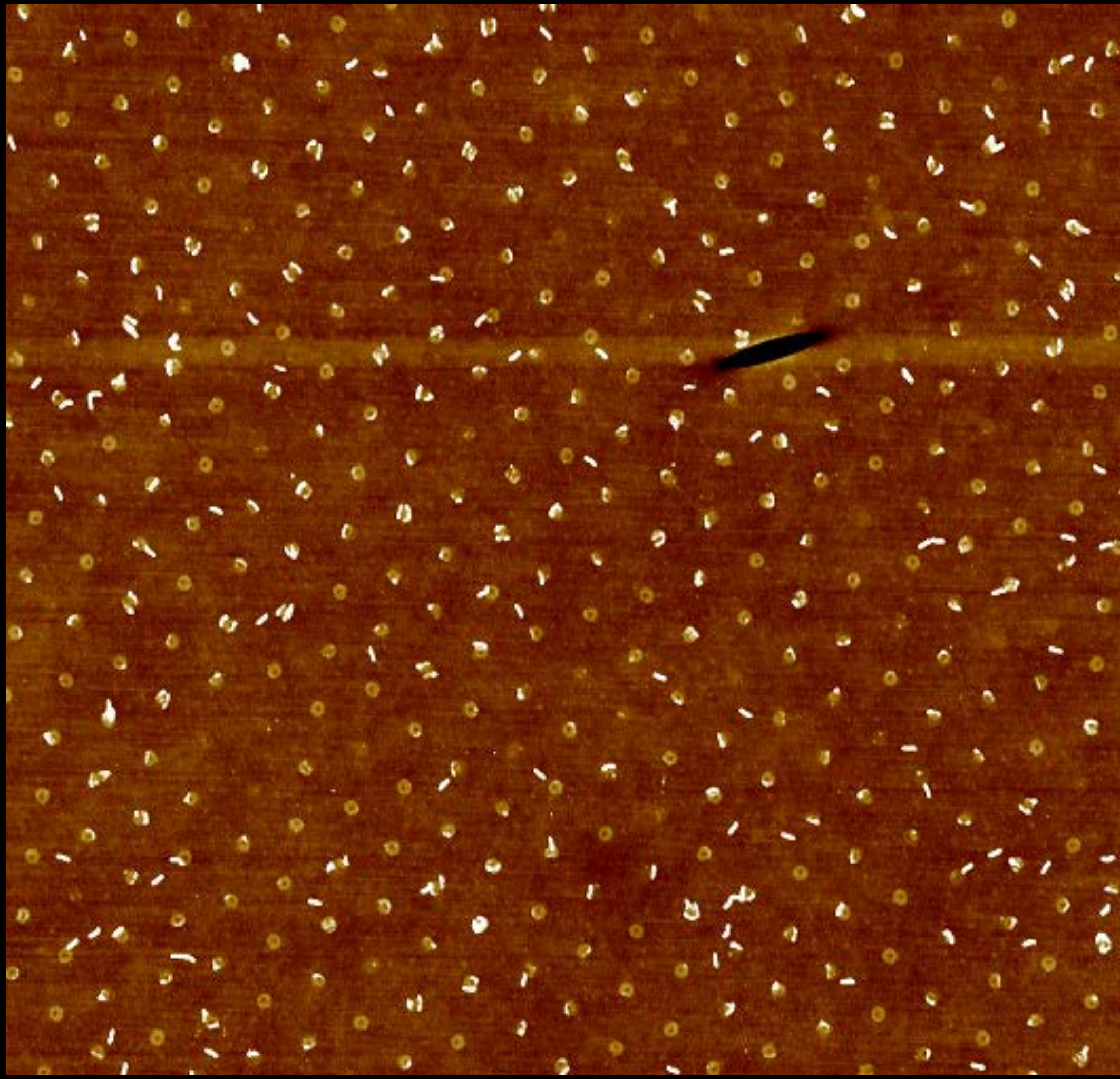
500 nm



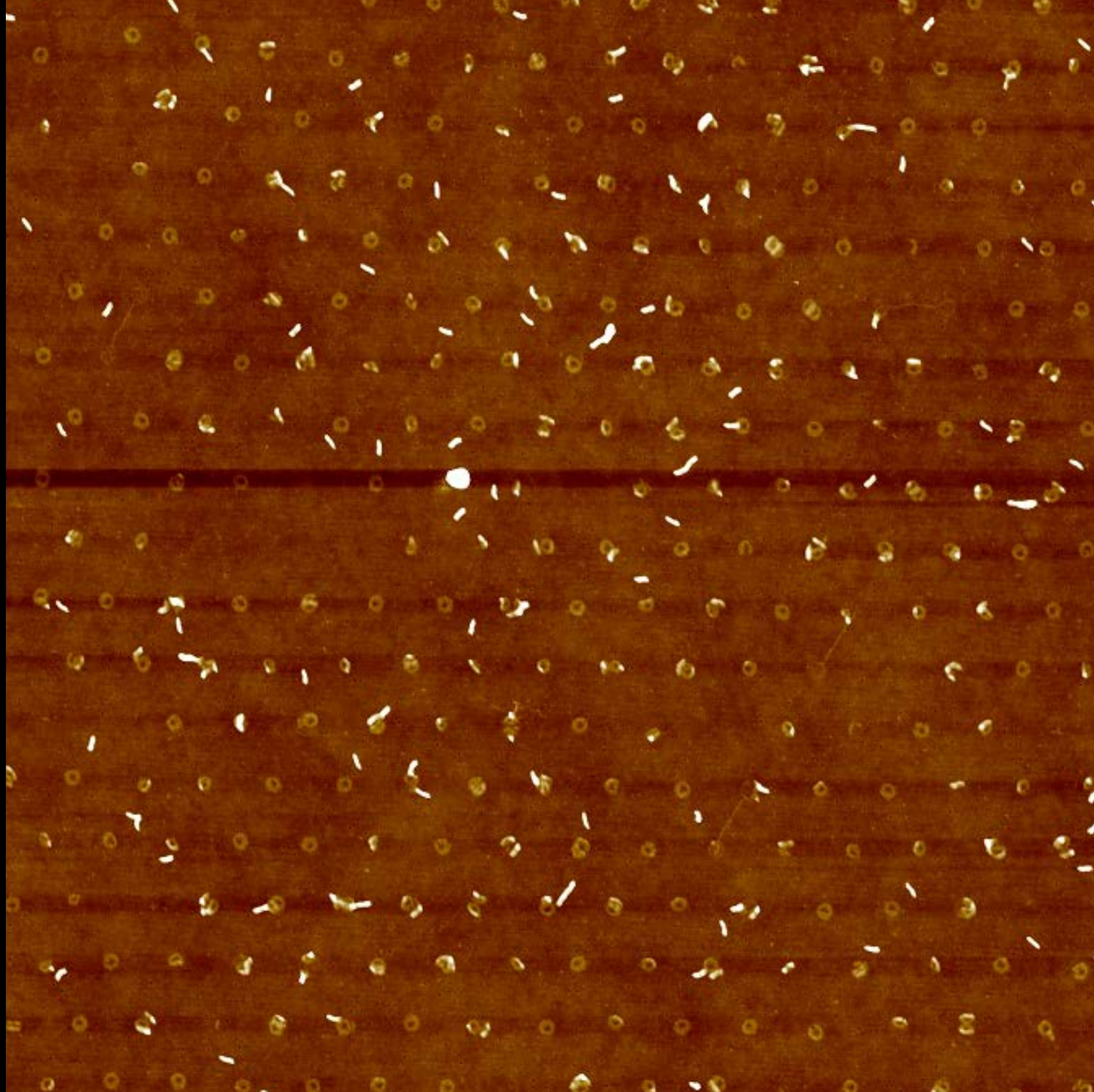
U. S. 10

00

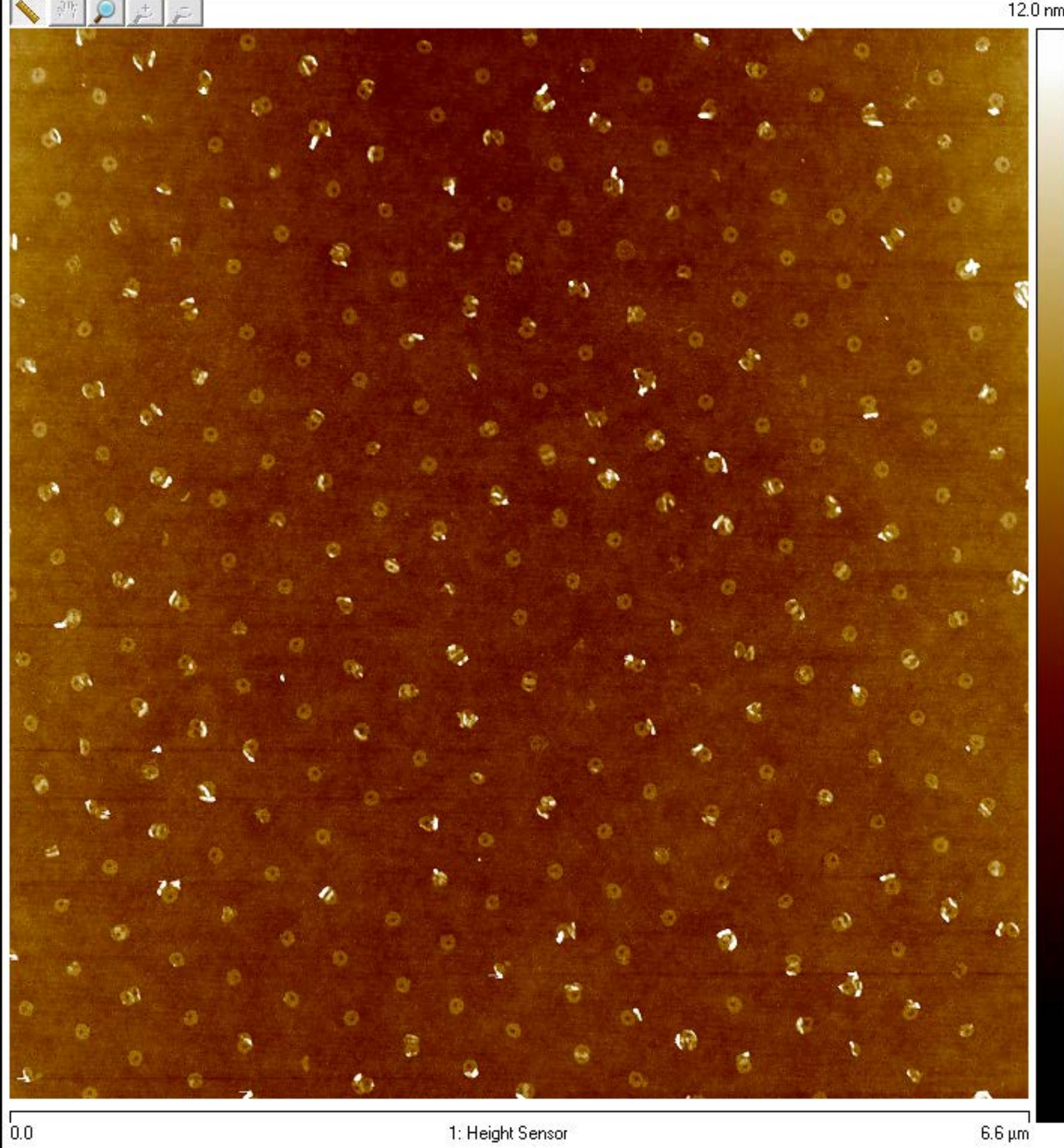
400 nm



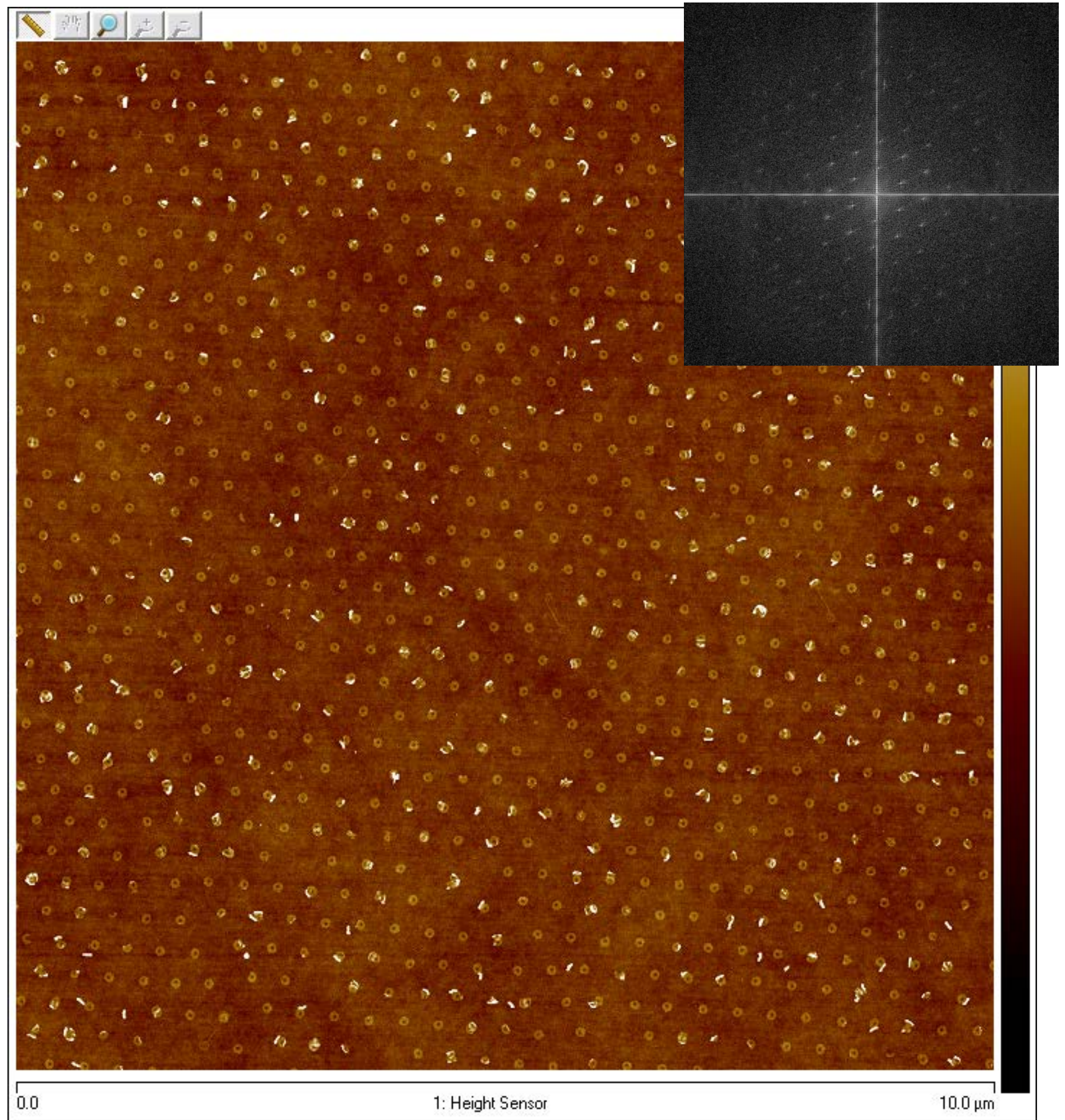
400 nm



400 nm

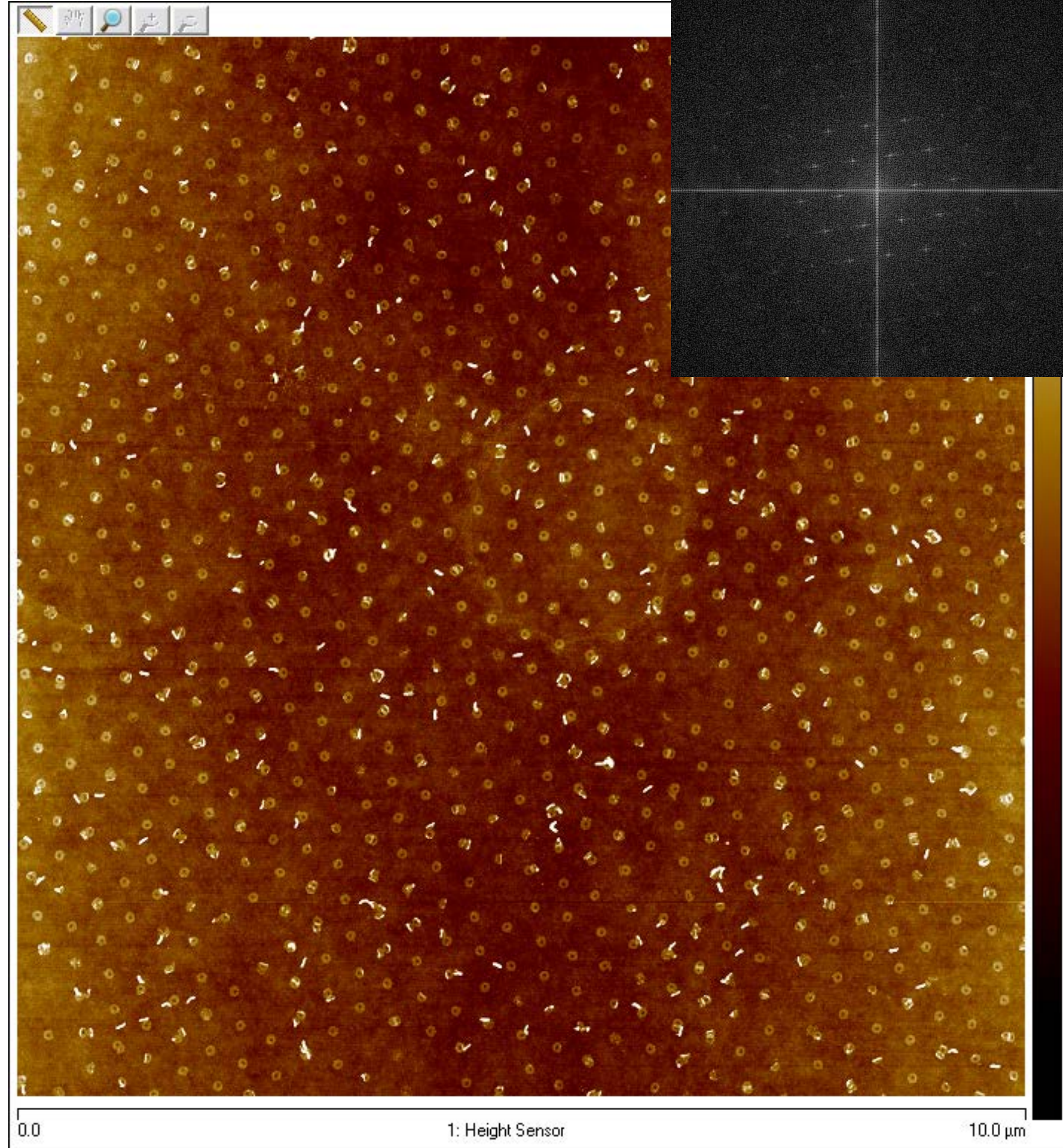


350 nm



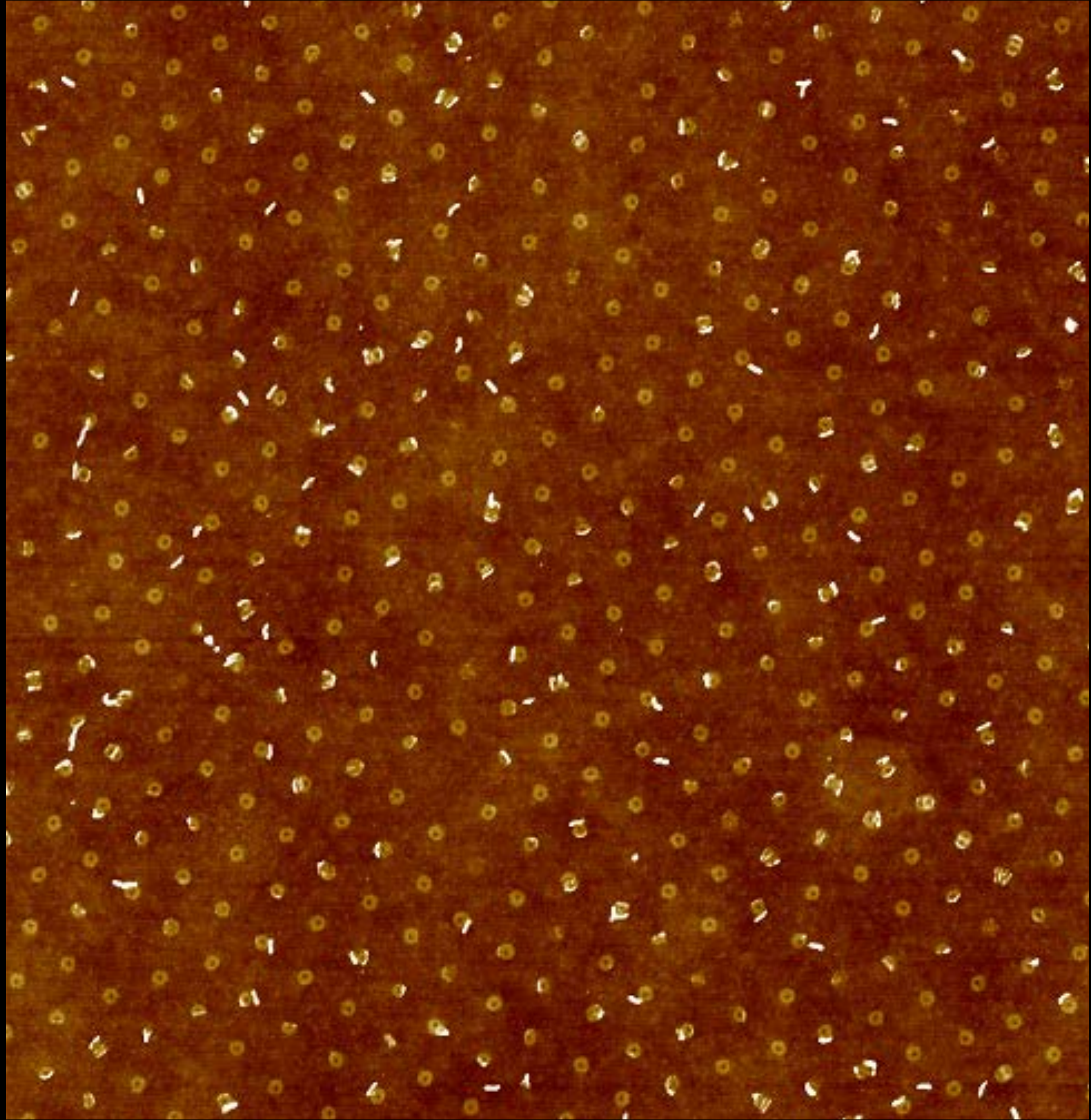
200 pM: 0- 8.2%, **1- 73%**, 2- 18.8% (438 sites)

350 nm

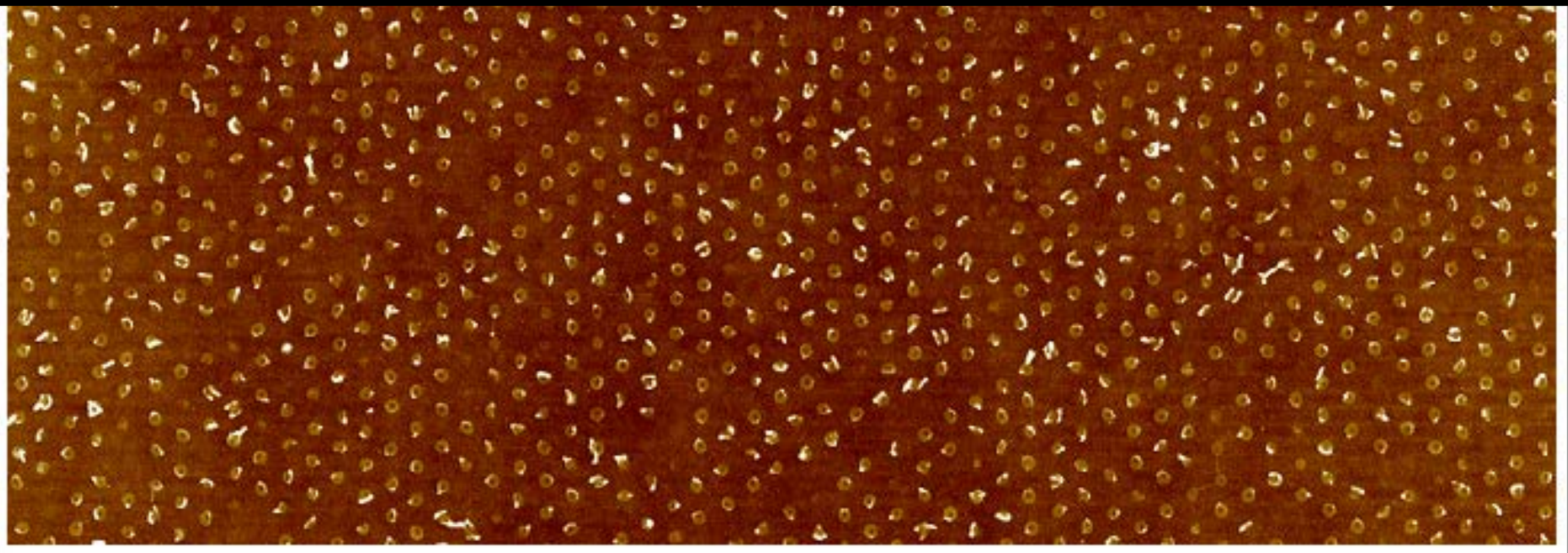


200 pM: 0- 8.45%, 1- 70%, 2- 21.55% (414 sites)

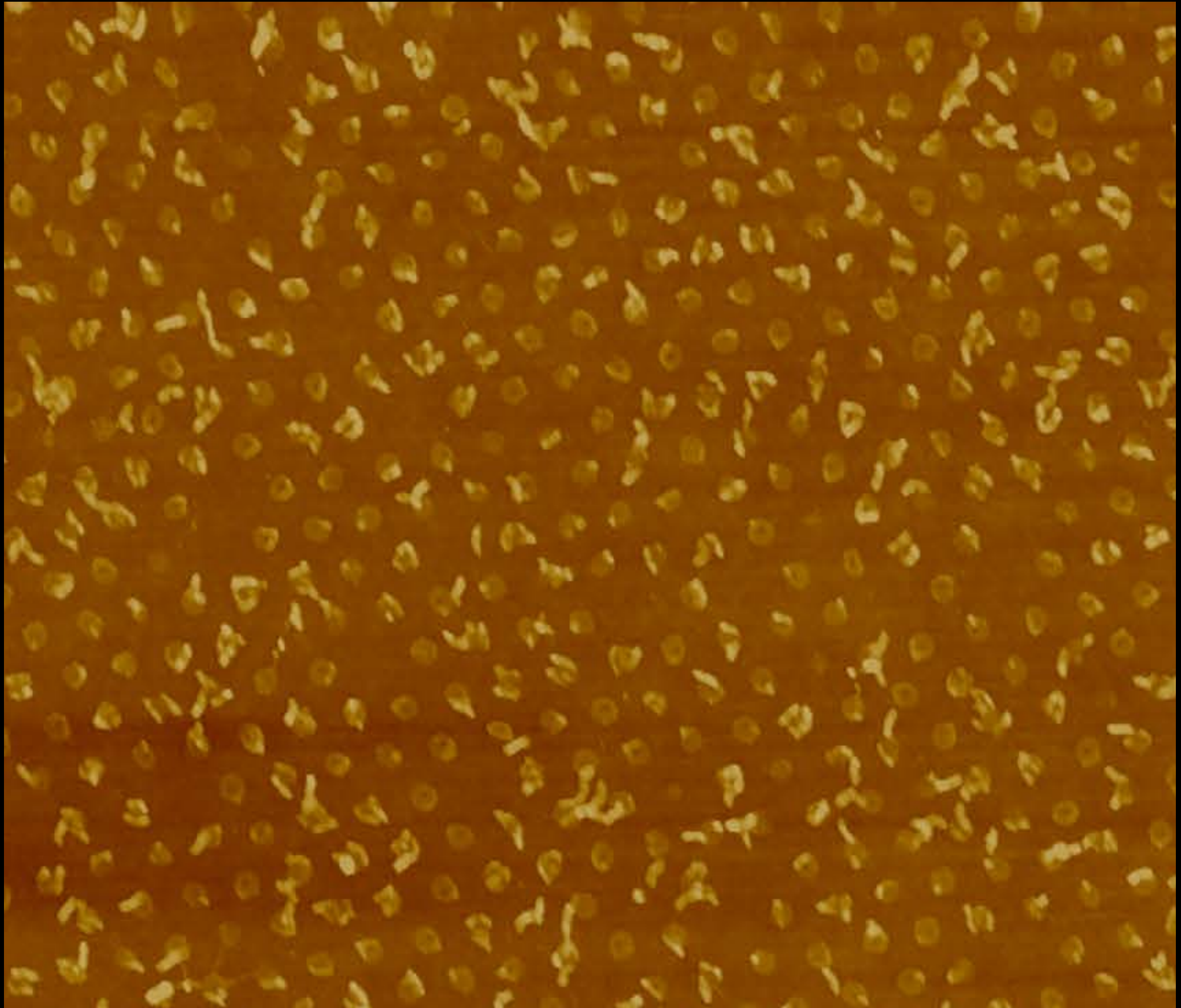
350 nm



200 nm



200 nm



200 nm

