

Supporting information for

Phage display derived peptide specific to carbamylated protein

Yuhao Ma^a, Meng Wu^b, Shuhui Li^b, Marcello Tonelli^c, Larry D. Unsworth^{a, b,*}

^a Department of Biomedical Engineering, University of Alberta, Edmonton, AB, Canada T6G 2V2

^b Department of Chemical and Materials Engineering, University of Alberta, Edmonton, AB, Canada T6G 1H9

^c Department of Medicine, University of Calgary, Calgary, Alberta, Canada

Author correspondence: Department of Chemical and Materials Engineering, University of Alberta, Edmonton, AB, Canada T6G 1H9; Email: lunswort@ualberta.ca (L.D. Unsworth).

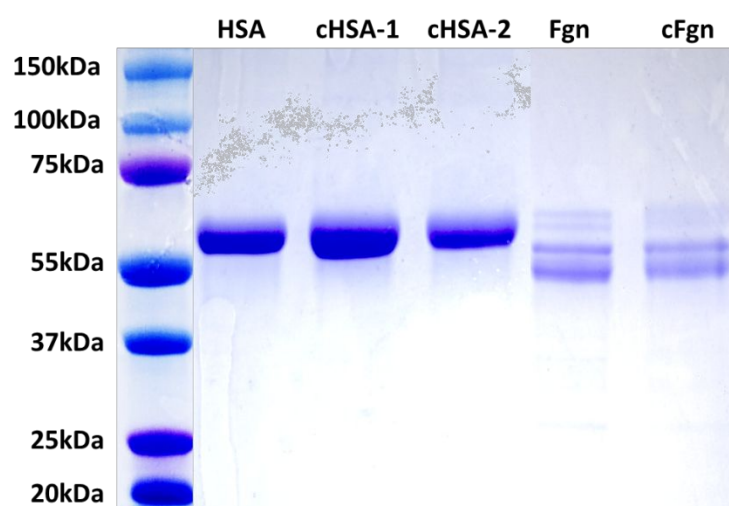


Figure S1. SDS-PAGE bands of native HSA and cHSA (cHSA-2 was used as the representative sample)

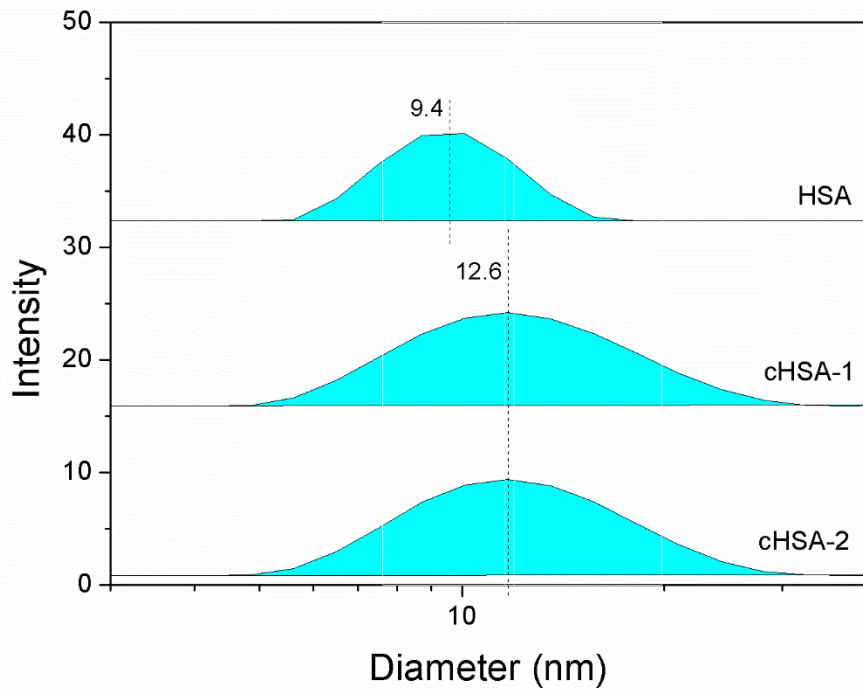


Figure S2. DLS size distribution of HSA, cHSA-1 and cHSA-2 (0.25 mg/ml in 0.1 M PB (pH 7.4), 25 °C, each curve represents average of three measurements)

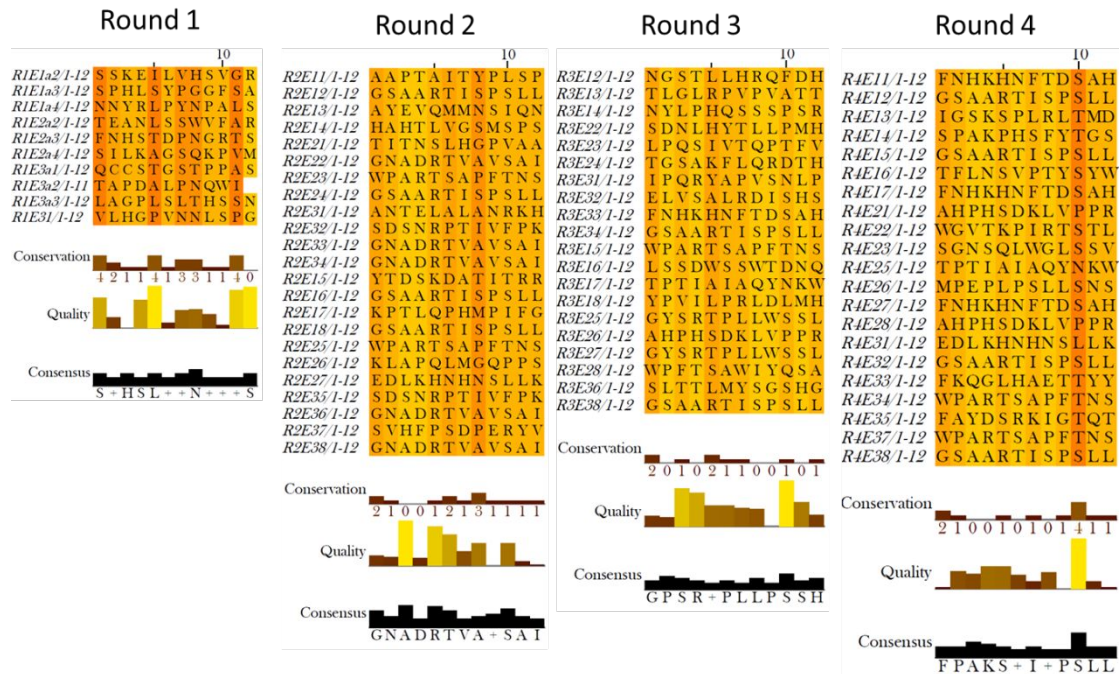


Figure S3. Sequence alignment results of four rounds of biopanning on cHSA-2

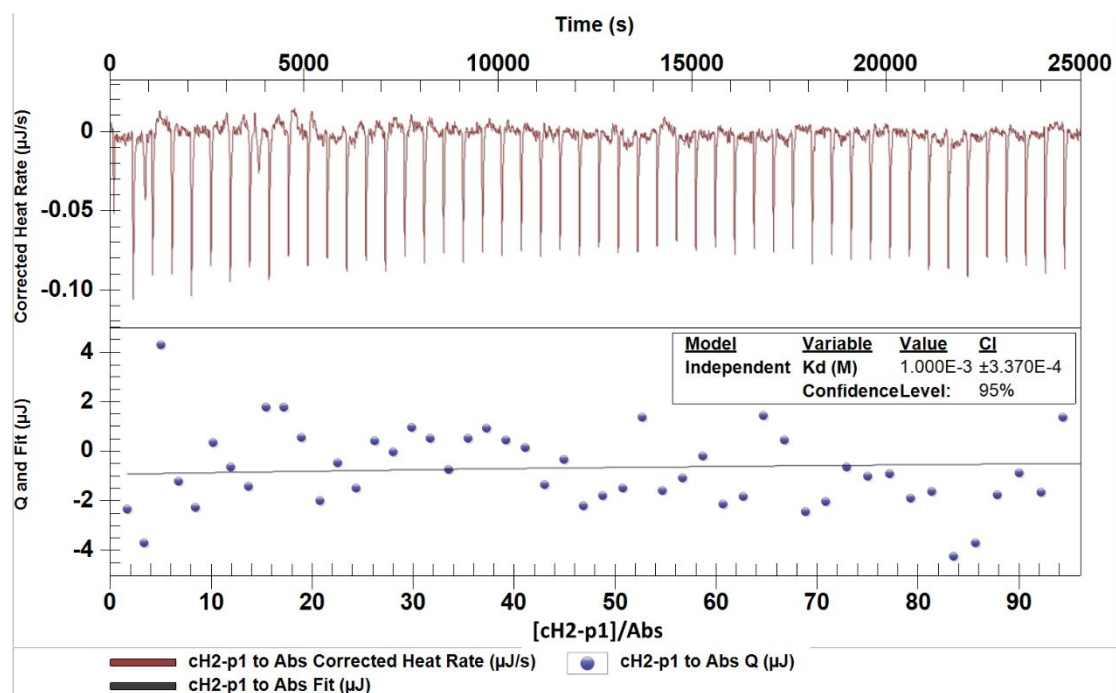


Figure S4. ITC raw titration data and fitting of integrated heat plots of peptide cH2-p1 titration into anti-HcIt

Table S1. Frequency of amino acids included in result of biopanning on cHSA-2

Amino acid	Frequency (%)
S	14.8
A	9.7
P	9.5
L	9.5
T	8.8
N	5.6
R	5.1
H	5.0
G	4.7
I	4.2
V	4.1
D	3.4
K	3.2
F	3.2
Y	2.6
Q	2.4
W	2.0
M	1.2
E	1.1

C	0.2
U	0.0