

SUPPORTING INFORMATION

FOR

Cannabichromene, related phytocannabinoids, and 5-fluoro-cannabichromene have anticonvulsant properties in a mouse model of Dravet syndrome

Lyndsey L. Anderson, Adam Ametovski, Jia Lin Luo, Declan Everett-Morgan, Iain S. McGregor, Samuel D. Banister and Jonathon C.

Arnold

CONTENTS:

Figure S1

Figure S2

Figure S1. ^1H (400 MHz, CDCl_3) and ^{13}C (100 MHz, CDCl_3) NMR spectra for 7-(5-fluoropentyl)-2-methyl-2-(4-methylpent-3-en-1-yl)-2H-chromen-5-ol

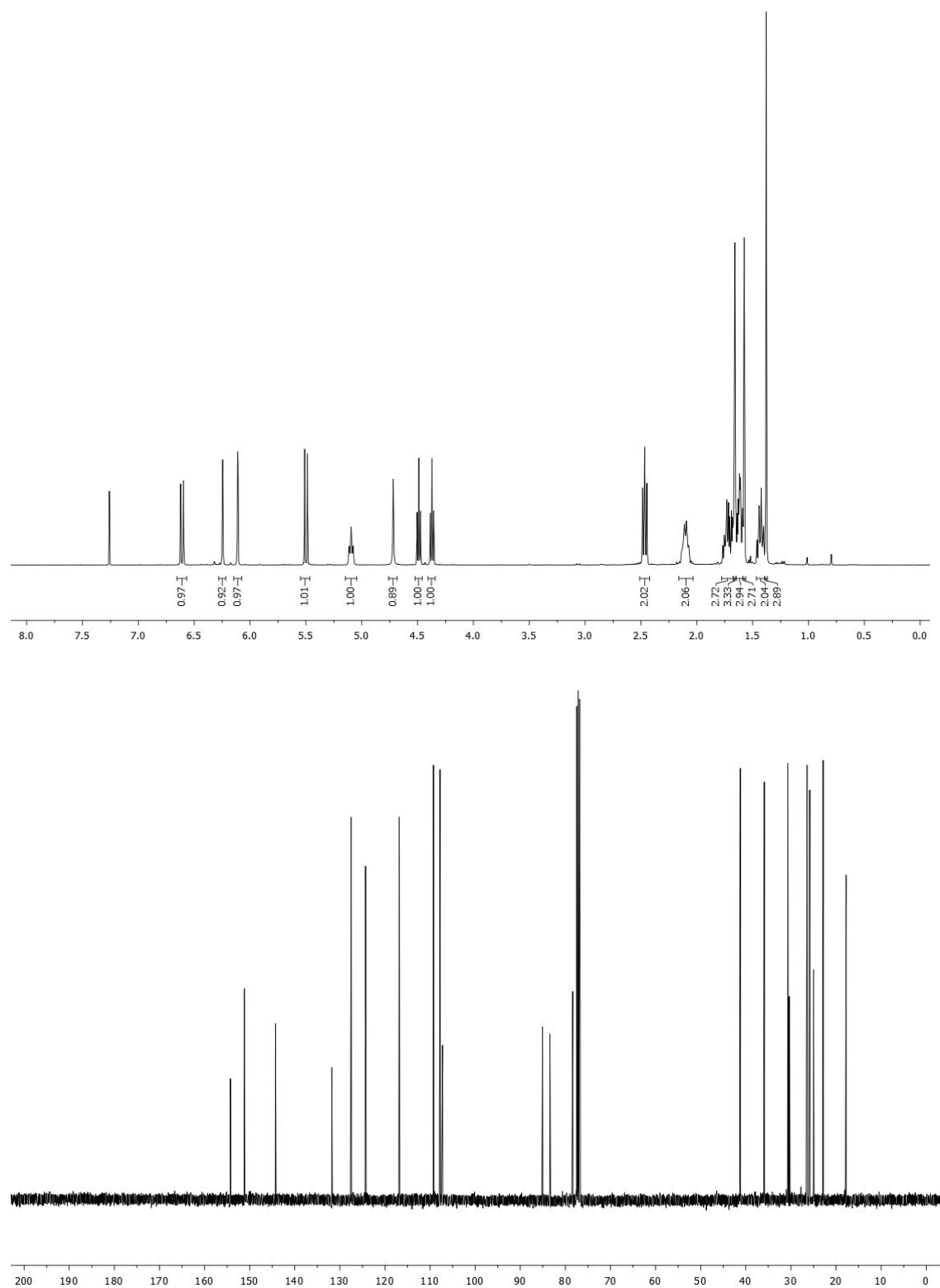
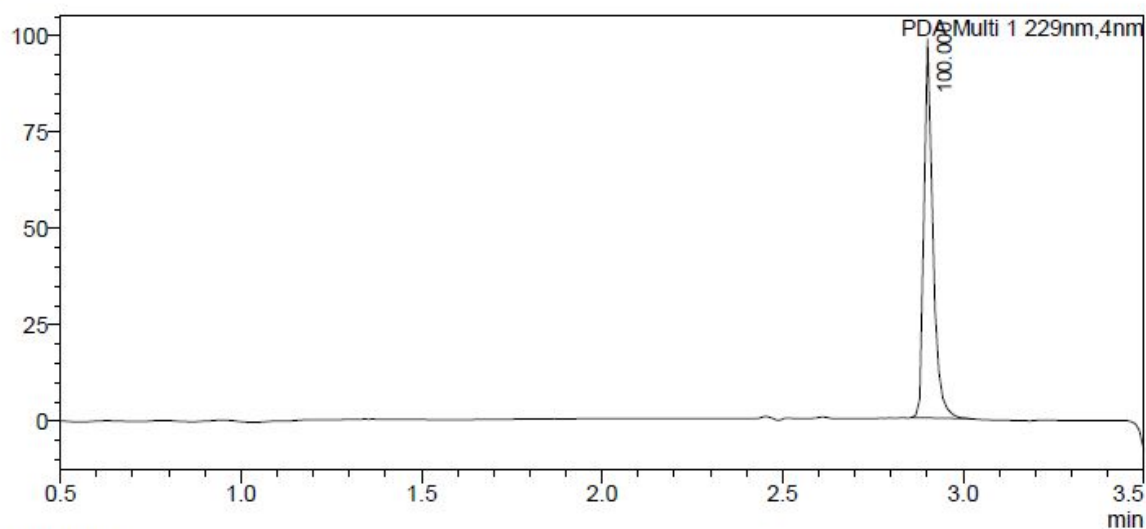


Figure S2. LCMS trace for 7-(5-fluoropentyl)-2-methyl-2-(4-methylpent-3-en-1-yl)-2H-chromen-5-ol (**3**)

UV Chromatogram

mAU



MS Spectra

Line#:1 R.Time:----(Scan#----)
MassPeaks:3 Mode: Positive
Spectrum Mode:Averaged 2.877-2.951(549-563) Base Peak:333.3(1886984)
BG Mode:Averaged 1.197-2.783(229-531) Segment 1 - Event 1

