

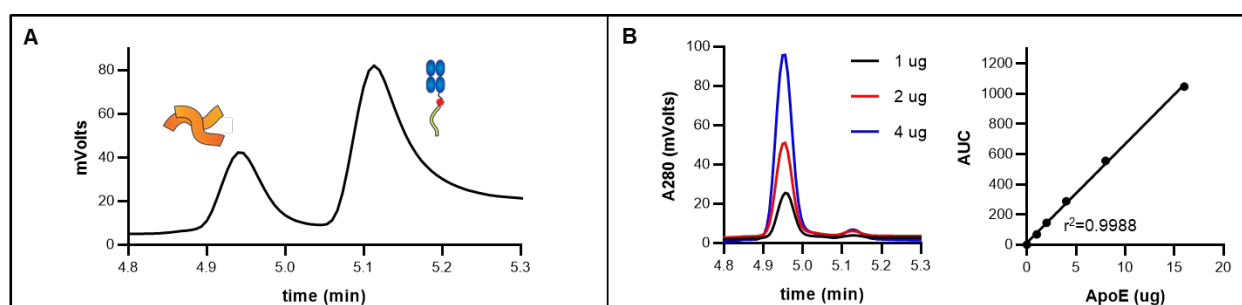
# Nanolipoprotein particles (NLPs) as a delivery platform for Fab based therapeutics

Martine Darwish<sup>+</sup>, Whitney Shatz<sup>+</sup>, Brandon Leonard, Kelly Loyet, Kathy Barrett, Janice L. Wong, Hong Li, Ryan Abraham, May Lin, Yvonne Franke, Christine Tam, Kyle Mortara, Inna Zilberleyb and Craig Blanchette\*

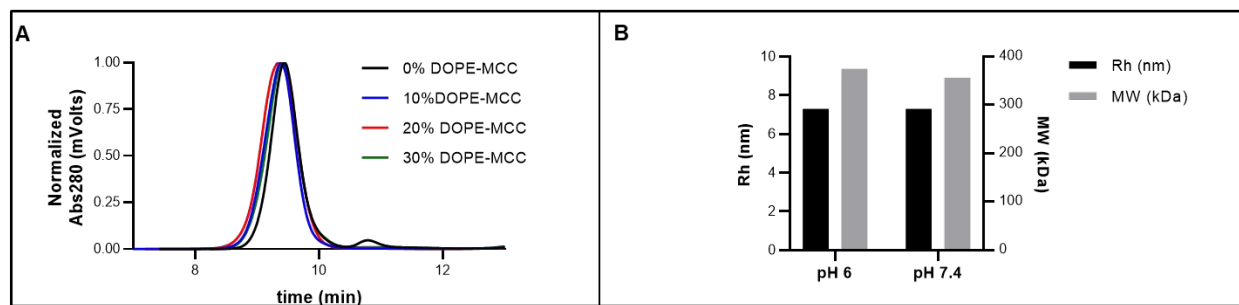
<sup>+</sup> Authors contributed equally

\* Corresponding author

Genentech, South San Francisco, CA 94088



**Figure S1.** Quantifying the protein composition of Fab-NLP conjugates. **A.** HPLC trace of a Fab-NLP conjugate. Two peaks were observed at 4.95 min and 5.15 min that correspond to apoE422k and Fab, respectively. **B.** HPLC traces of apoE422k at different injection amounts and the corresponding standard curve. The apoE422k standard curve was used to determine the apoE422k concentration of the Fab-NLP conjugate.



**Figure S2.** Effect of DOPE-MCC on NLP assembly. **A.** SEC analysis of NLPs assembled with increasing molar concentrations of DOPE-MCC. **B.** MW and Rh analysis of NLP assembled under crosslinking conditions (pH 7.4) and non-crosslinking conditions (pH 6).