

Supporting Information

Elucidation of Capacity Degradation for Graphite in Sulfide-Based All-Solid-State Lithium Batteries: A void formation mechanism

Kentaro Kuratani^{†,*}, Atsushi Sakuda[‡], Tomonari Takeuchi[†] and Hironori Kobayashi[†]

[†]Research Institute of Electrochemical Energy, Department of Energy and Environment, National Institute of Advanced Industrial Science and Technology (AIST), 1-8-31, Midorigaoka, Ikeda, Osaka, 563-8577, Japan

[‡]Department of Applied Chemistry, Graduate School of Engineering, Osaka Prefecture University, 1-1, Gakuen-cho, Naka-ku, Sakai, Osaka, 599-8531, Japan

*Corresponding author: k-kuratani@aist.go.jp (KK)

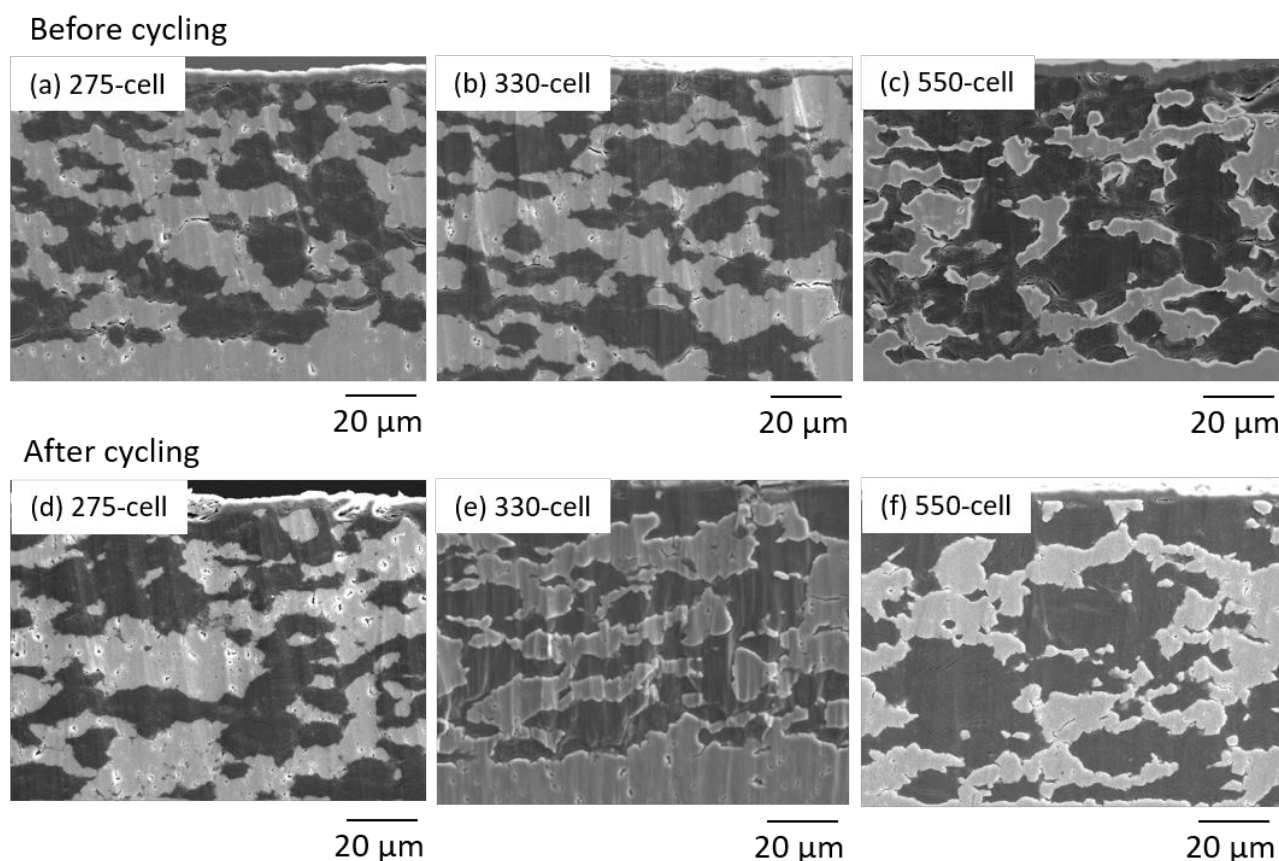


Figure S1 Magnified cross-sectional SEM images of before and after cycling. (a, e) 275-cell, (b, e) 330-cell, (c, f) 550-cell.