

Supporting Information

A novel tool to investigate the early and late-stages of alpha-synuclein aggregation

Sumanta Ghosh^{†a}, Sakshi^{†b}, Bikash Chandra Swain^b, Ritobrita Chakraborty^a, Umakanta Tripathy^{*b}, Krishnananda Chattopadhyay^{*a}

^aStructural Biology and Bioinformatics Division; Indian Institute of Chemical Biology (CSIR-IICB); 4 Raja S. C. Mullick Road, Kolkata, Country. India 700032;

^bDepartment of Physics, Indian Institute of Technology (Indian School of Mines), Dhanbad-826004, Jharkhand, India.

***Corresponding authors:** Umakanta Tripathy (E-mail: utripathy@iitism.ac.in); Krishnananda Chattopadhyay (Email: krish@iicb.res.in).

[†]Equal Contribution

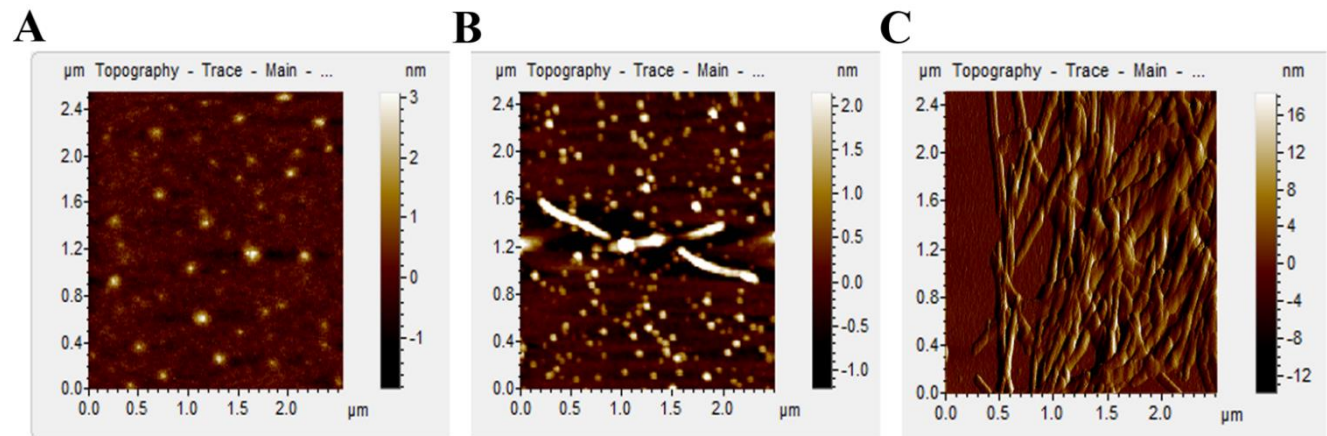


Figure S1: AFM images of α -syn after A) 8, B) 22, and C) 48 h of incubation.

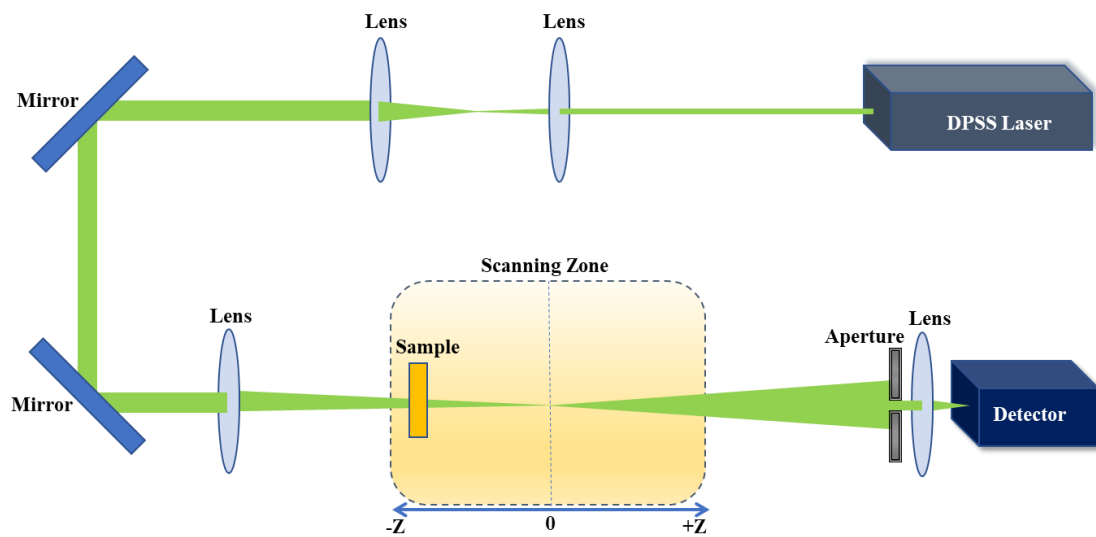


Figure S2. Layout of a CA Z-scan experimental setup.