

## Highly efficient cell membrane tracker based on solvatochromic dye with near infrared emission

Huijie Liu, ‡ Hongyi Zhang, ‡ Jiajie Luo, Junli Peng, Baoshuai An, Zhen Qiao, Ningning Wei, \* and Yanru Zhang,\* Wei Zhu

Department of Pharmacology and Medicinal Chemistry, Qingdao University School of Pharmacy, Qingdao 266021, China

‡ These authors contributed equally

\* Correspondence: Ningning Wei (weiningning@qdu.edu.cn)

Yanru Zhang (yanru.zhang@qdu.edu.cn)

### Contents

Figure S1.....	S2
Figure S2.....	S2
Figure S3.....	S3
Video S1.....	S3

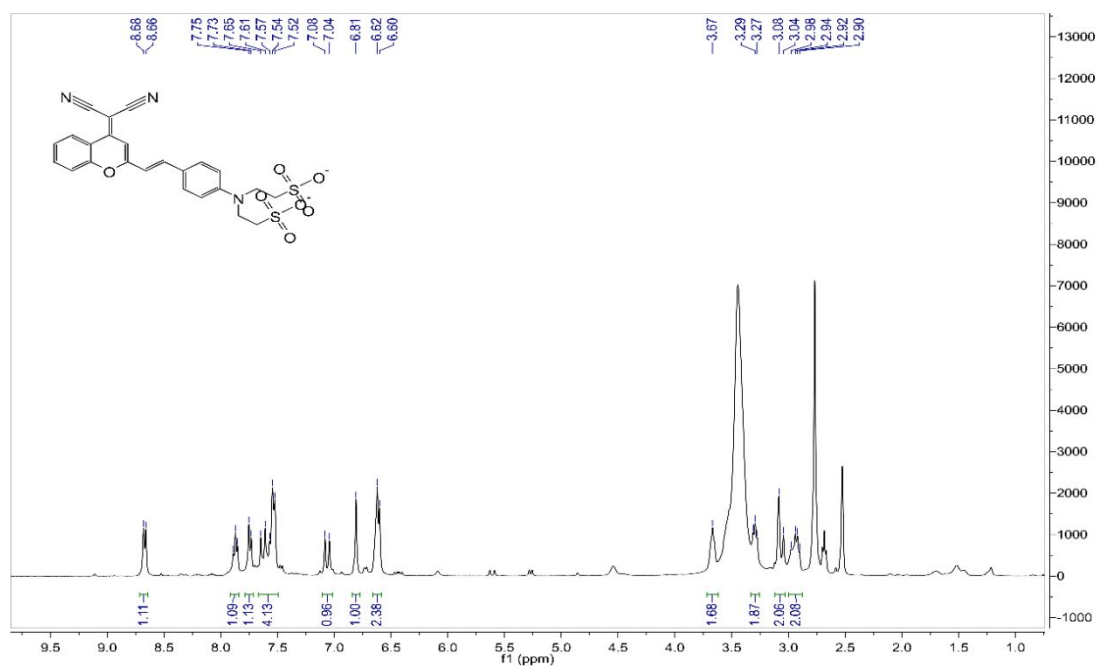


Figure S1.  $^1\text{H}$  NMR (500 MHz) spectrum of MRL in  $d_6$ -DMSO.

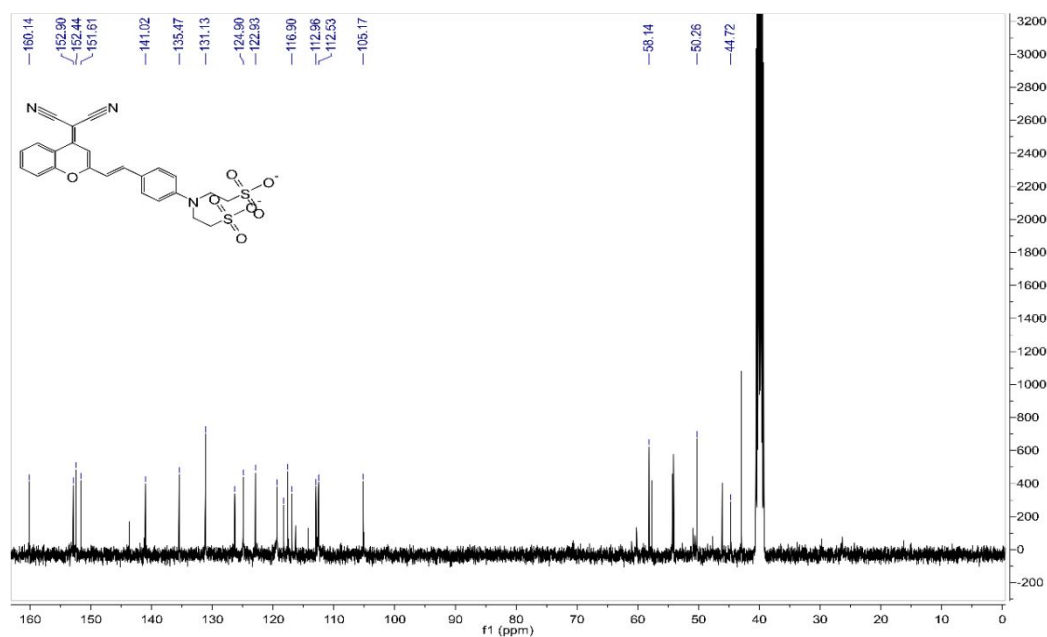


Figure S2.  $^{13}\text{C}$  NMR (125 MHz) spectrum of MRL in  $d_6$ -DMSO.

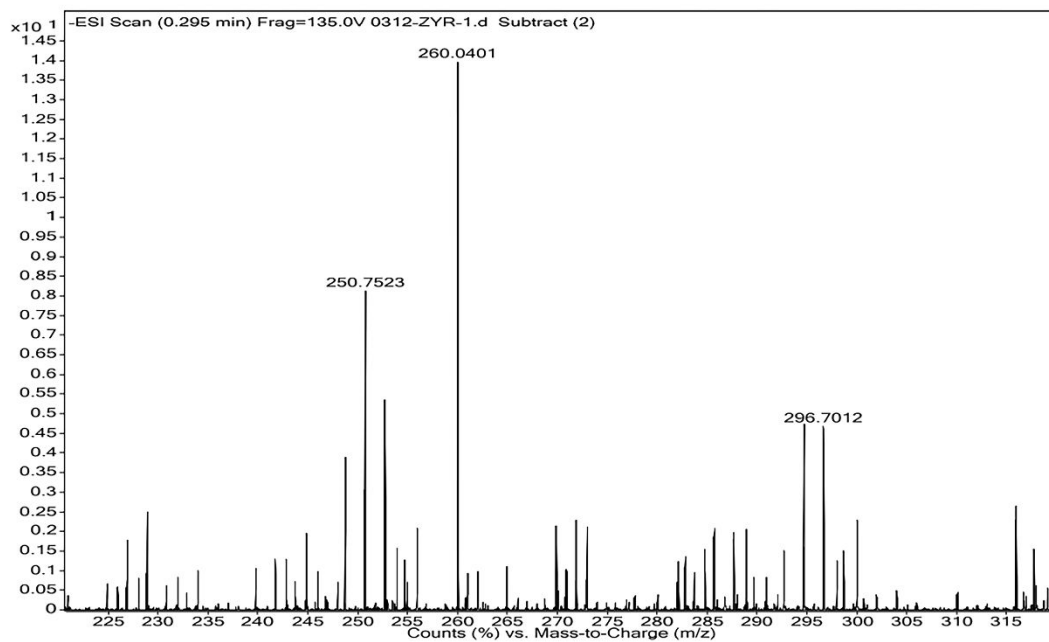


Figure S3. -ESI-MS of MRL.

Video S1. Process of digesting cells that labeled by MRL