

Supporting Information

Novel Solid Electrolyte CO₂ Gas Sensors Based on c-Axis-Oriented Y-doped La_{9.66}Si_{5.3}B_{0.7}O_{26.14}

Nan Ma [†], Shingo Ide ^{‡,§}, Koichi Suematsu [†], Ken Watanabe [†], Kengo Shimanoe ^{†,*}

[†] Department of Advanced Materials Science and Engineering, Faculty of Engineering Sciences, Kyushu University, Kasuga, Fukuoka, 816-8580, Japan

[‡] Department of Molecular and Material Sciences, Interdisciplinary Graduate School of Engineering Sciences, Kyushu University, Kasuga, Fukuoka, 816-8580, Japan

[§] Engineered Materials Sector R&D Center, Mitsui Mining & Smelting Co., LTD., Ageo, Saitama, 362-0021, Japan

*To whom correspondence should be addressed:

shimanoe.kengo.695@m.kyushu-u.ac.jp.

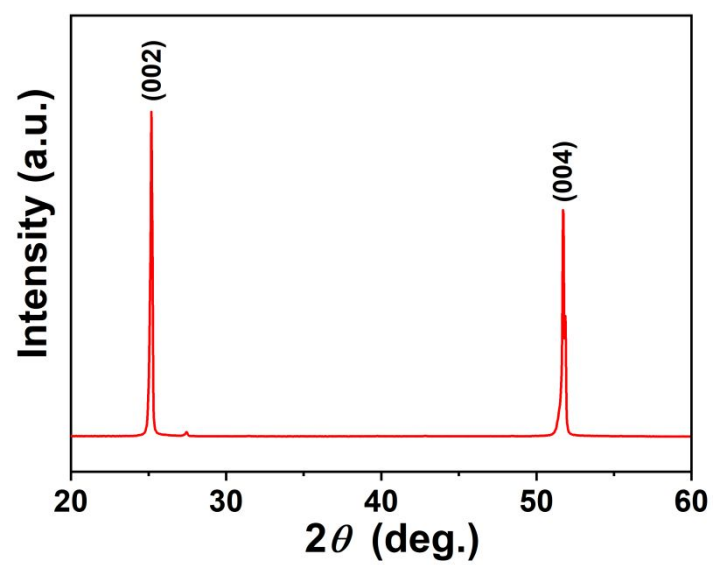


Figure S1 XRD pattern of Y-LSBO ceramic.