

Supplementary Figure

Figure 1.

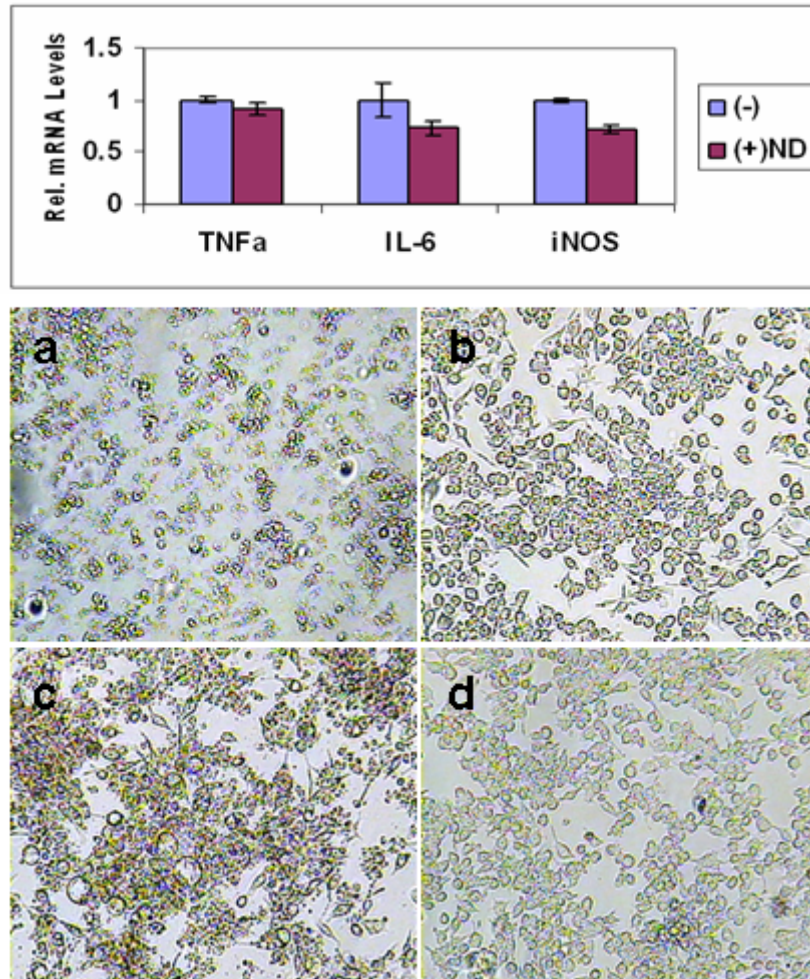


Figure 1. LPS-mediated confirmation of DOX-induced cell death. Top: Genetic analysis (real time PCR) was performed to monitor inflammation of RAW 264.7 murine macrophage upon addition of nanodiamonds (100μg/ml). No inflammation was detected. Bottom: (a) 10-hour-growth cell morphologies in the presence of doxorubicin (3 μg/ml), (b) nanodiamonds (30 μg/ml), (c) nanodiamonds conjugated with doxorubicin that show a gradual cell death response (30 μg/ml ND+3 μg/ml DOX) that was attenuated due to DOX sequestering on the NDs that showed a clear increase in cell density compared to DOX only samples, and (d) The cells were pretreated with LPS (10ng/ml), a known inhibitor of DOX-mediated apoptosis, cell death in the presence of the same additives as seen in (c) was significantly decreased, confirming that cell death was DOX mediated.