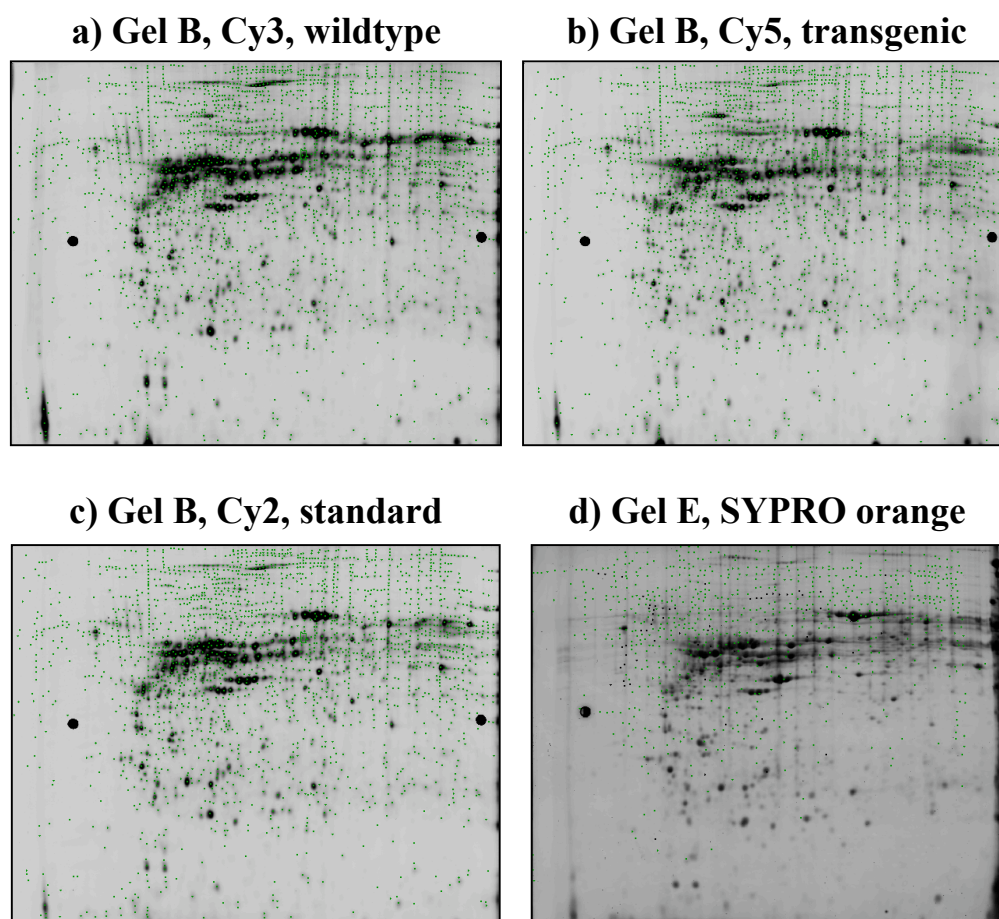


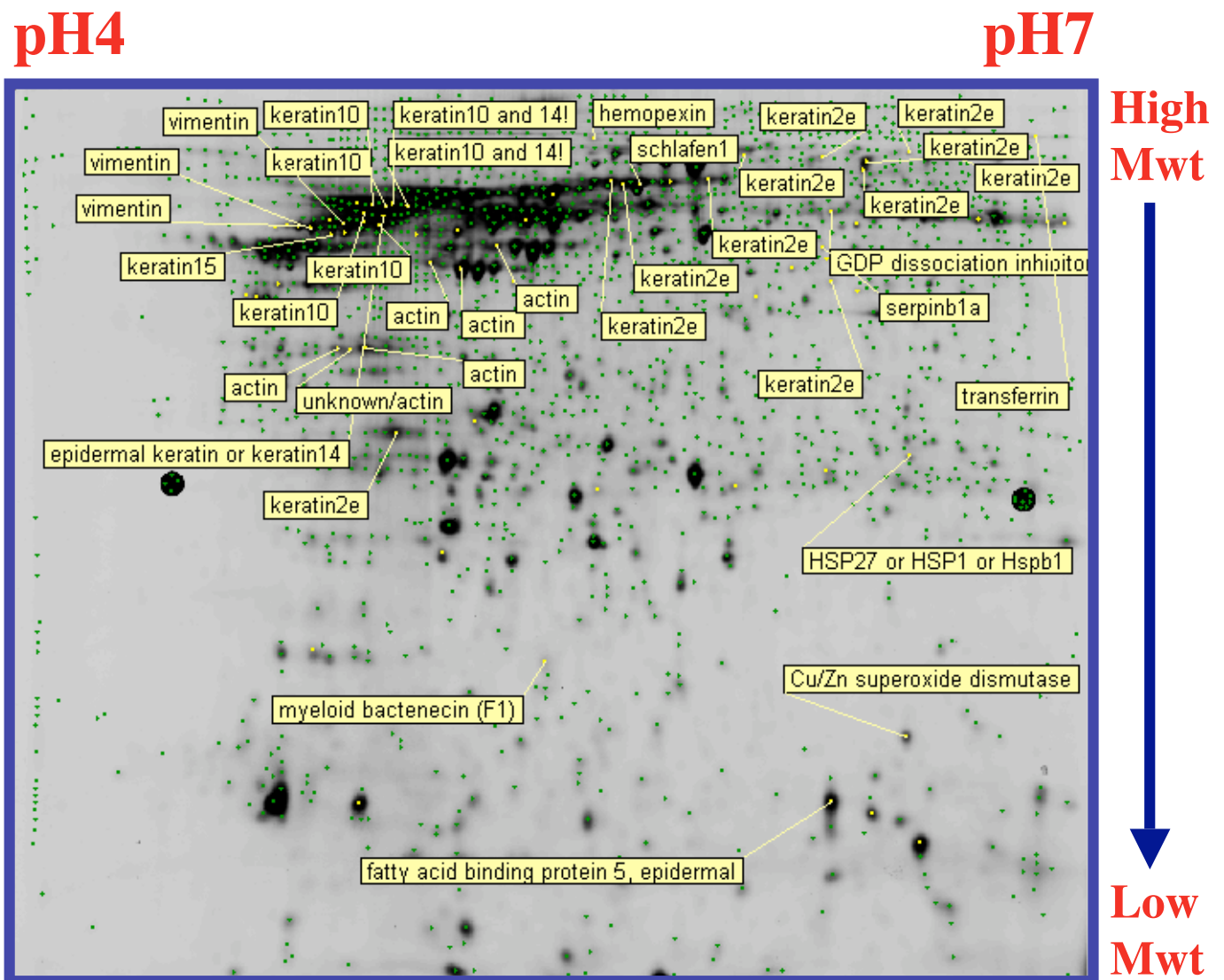
Supplementary Figures

Figure 1 **Stage 2, pH4-7, 2D fluorescence gel images**



The 2D gel images of gel B, a)-c) and gel E d) (the preparatory gel), from the stage 2, pH4-7 DiGE experiment. The green dots represent each of the spots identified by the DeCyder BVA module. a) Cy3 image, wildtype (NSC.2), b) Cy5 image, transgenic (stage 2), c) Cy2 image, pooled internal standard, d) SYPRO orange image, transgenic and wildtype. The prominent black circles at either side of each image (approximately half way down) are the fluorescent reference markers.

Figure 2 MALDI ToF identification of stage 5 differences



Example of an annotated protein-map for the stage 5 verses NSC pH4-7 differences identified by MALDI ToF is shown (note, identification of schlafen1 was on the edge of significance and was thus re-evaluated by tandem MS and confidently identified as keratin 2e, the latter matching the migration profile of the spot).