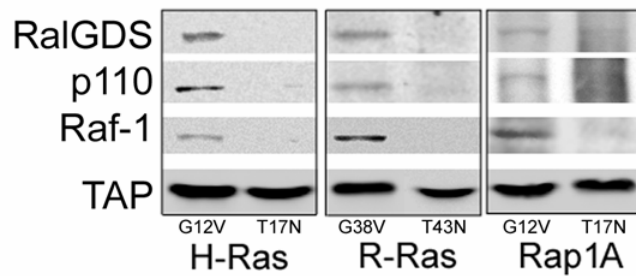


Supplementary Figure 1



Supplementary Figure 1: Known Ras effectors in TAP-Ras pulldowns. TAP-tagged H-Ras, R-Ras or Rap1A bearing the indicated mutations were expressed in NIH 3T3 cells. TAP-Ras protein complexes were extracted from cell lysates with Ni^{++} -coupled sepharose beads, then eluted in buffer containing 400 mM imidazole. TAP-Ras protein complexes in the Ni^{++} eluates were re-captured on calmodulin-coupled sepharose beads, and subsequently eluted with EGTA. Raf-1, RalGDS, p110 subunits of PI3-kinase and TAP-Ras proteins in the final eluate fractions were visualized by immunoblotting with specific antibodies as indicated.