

Electronic supplementary information

For

Multifunctional single-layered graphene quantum dots used for diagnosis of mitochondrial malfunction-related diseases

Xiao Li Jiang,^a Jia Hui Liu,^b Yan Ting Que,^a Yu Mei Que,^a Ping Ping Hu,^{*a} Cheng Zhi Huang
and Xiao Yong Tong^{*a}

Email: Ping Ping Hu-huping07@163.com; Xiao Yong Tong-xiaoyongtong@cqu.edu.cn

^{*}Corresponding author

Number of pages: 3

number of figures: 3

Figures

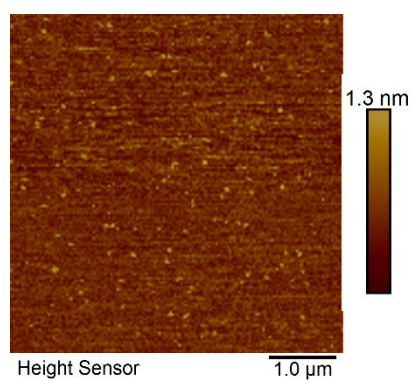


Figure S1 AFM image of s-GQDs.

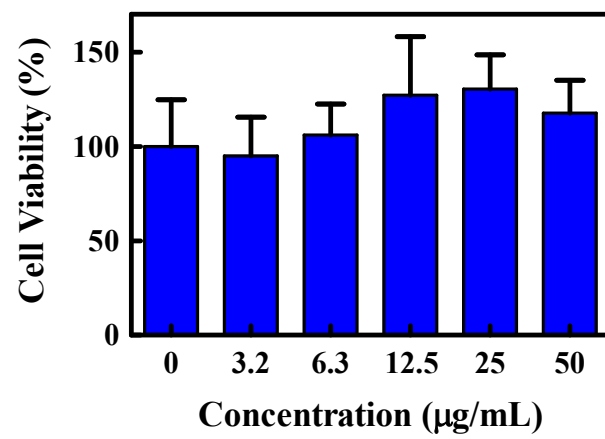


Figure S2 Concentration-dependent cytotoxicity of s-GQDs after 48 h of incubation with WT SMCs. Data are expressed as means \pm SD of 3 independent experiments.

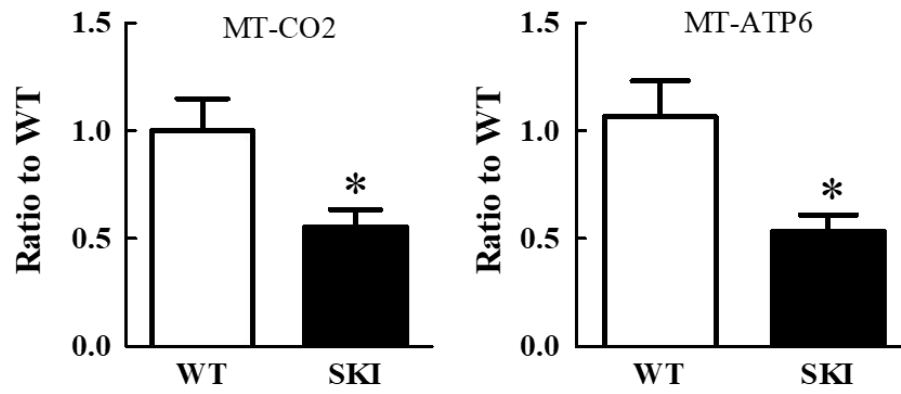


Figure S3 mRNA quantification of MT-CO2 and MT-ATP6 expression in aorta of WT/SKI mice.

Statistical significance of differences in mean values: * $p < 0.05$, *versus* WT, n=5-7.