

Supporting information:

Rheostatic control of protein expression using Tuner™ cells

I-Te Chu,<sup>‡, ∇</sup> Shannon L. Speer,<sup>†, ∇</sup> and Gary J. Pielak,<sup>\*, †, ‡, §, ||</sup>

<sup>†</sup>Department of Chemistry, <sup>‡</sup>Department of Biochemistry and Biophysics, <sup>§</sup>Lineberger Comprehensive Cancer Center, <sup>||</sup>Integrative Program for Biological and Genome Sciences, University of North Carolina at Chapel Hill, Chapel Hill, NC 27599.

---

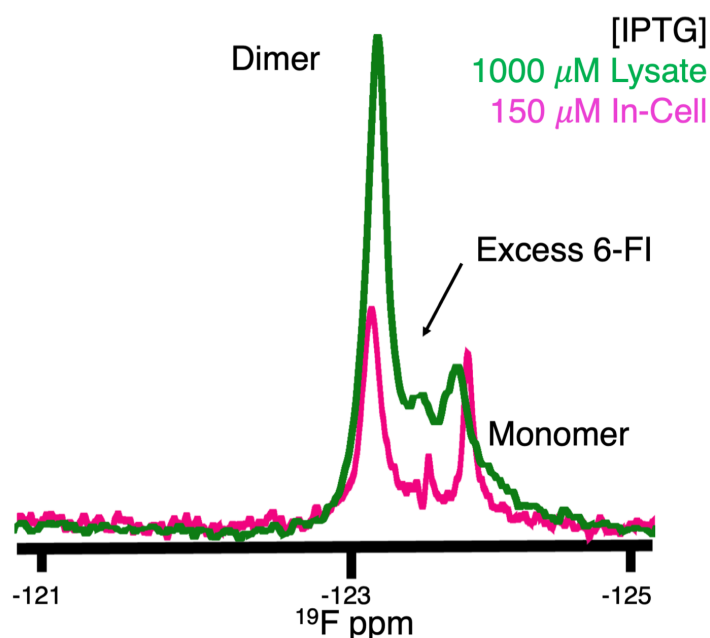


Figure S1: <sup>19</sup>F NMR spectra acquired at 298 K of A34F GB1 in Tuner™ cells at an intermediate inducer concentration and a lysate spectrum at a high inducer concentration. The resonance from excess 6-fluoroindole (6-FI) is also observed.

