

Supporting Information

for

Dragonfly-Wing-Inspired Inclined Irregular
Conical Structures for Broadband
Omnidirectional Antireflection Coatings

*Chen-Yu Chien, Yu-Han Chen, Ru-Yu Chen, and Hongta Yang**

Department of Chemical Engineering, National Chung Hsing University, 145 Xingda
Road, Taichung City 40227, Taiwan

*Corresponding Author: E-mail: hyang@dragon.nchu.edu.tw (H. Yang)

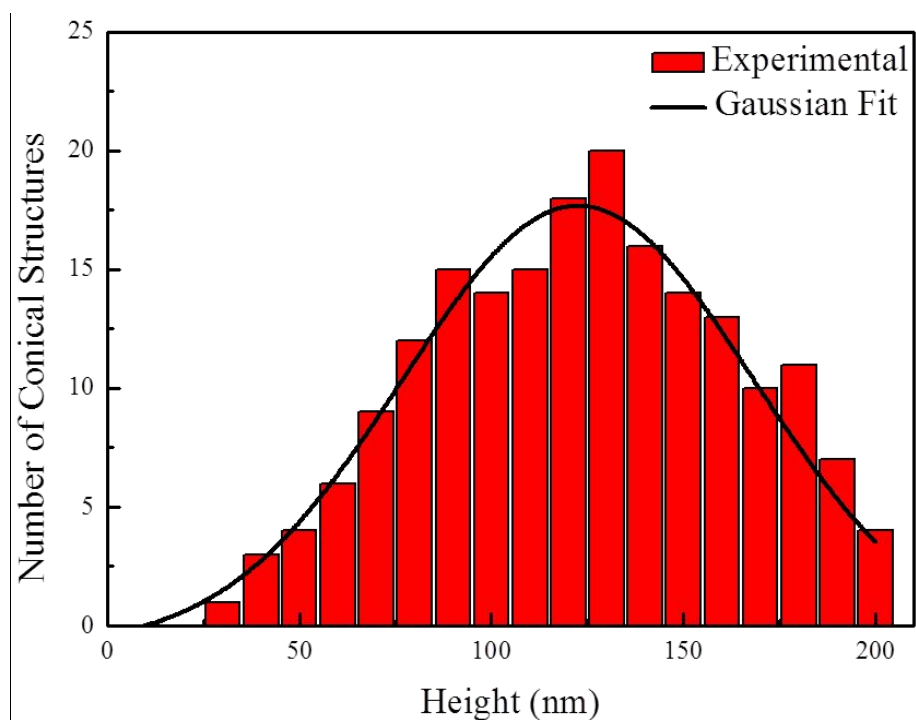


Figure S1. Statistical analysis of the conical structure height measured on the magnified SEM image of the dragonfly wing as displayed in Figure 1 (d). The histogram shows the height distribution of the conical structures. A Gaussian profile describes the experimental data

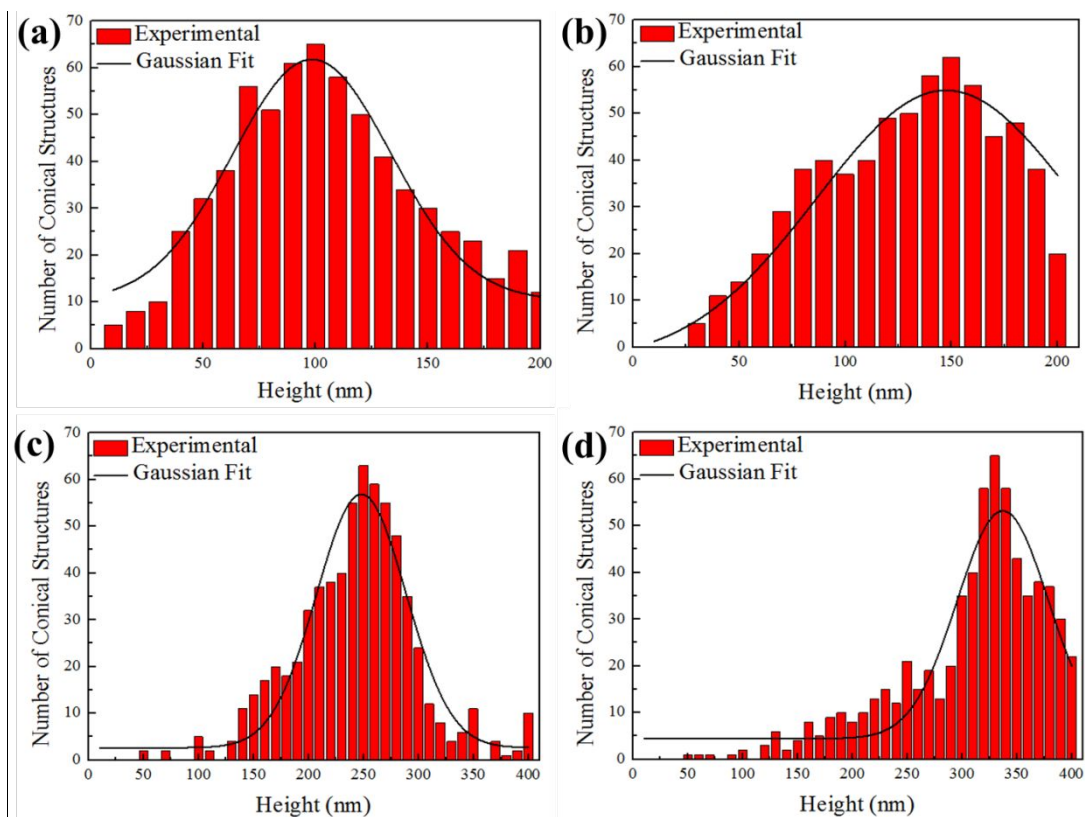


Figure S2. Statistical analyses of the PET conical structure heights at different RIE durations measured on the magnified SEM images as displayed in Figure 4. (a) 5 min, (b) 7.5 min, (c) 10 min, and (d) 12.5 min. The histogram shows the height distribution of the conical structures. A Gaussian profile describes the experimental data.

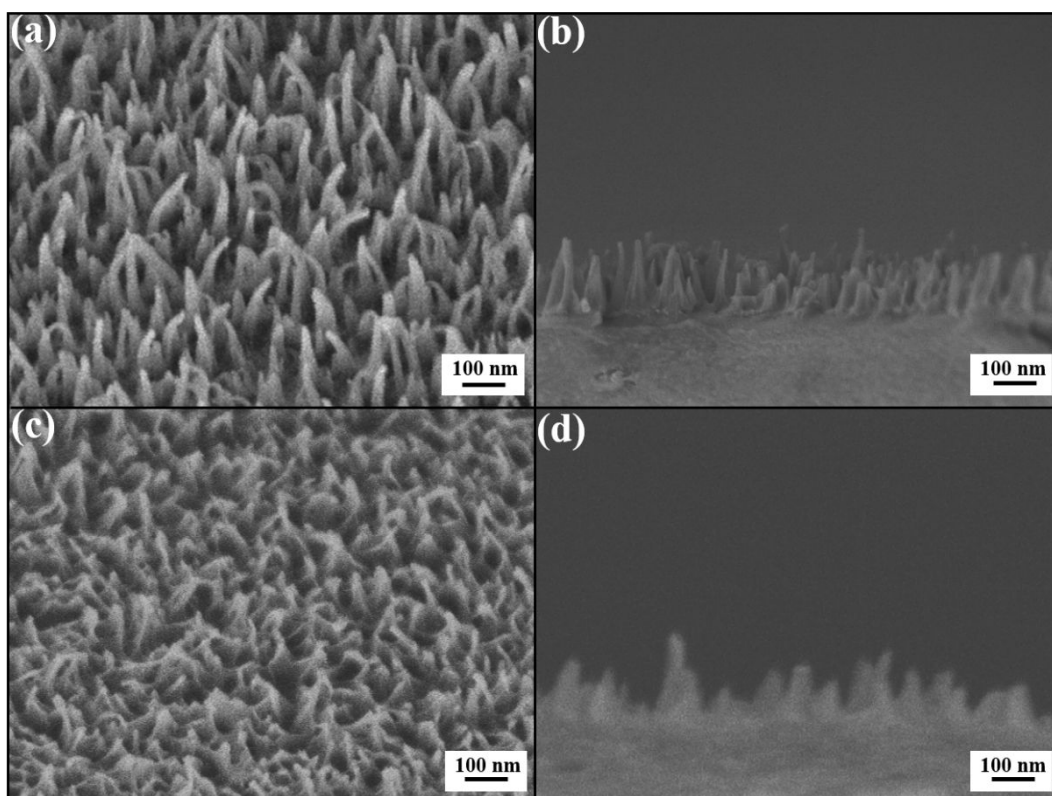


Figure S3. (a) Side-view SEM image and (b) cross-sectional SEM image of a PET substrate coated with PET conical structures after a 7.5 min RIE process. (c) Side-view SEM image and (d) cross-sectional SEM image of a dragonfly (*Orthetrum triangulare*) wing.

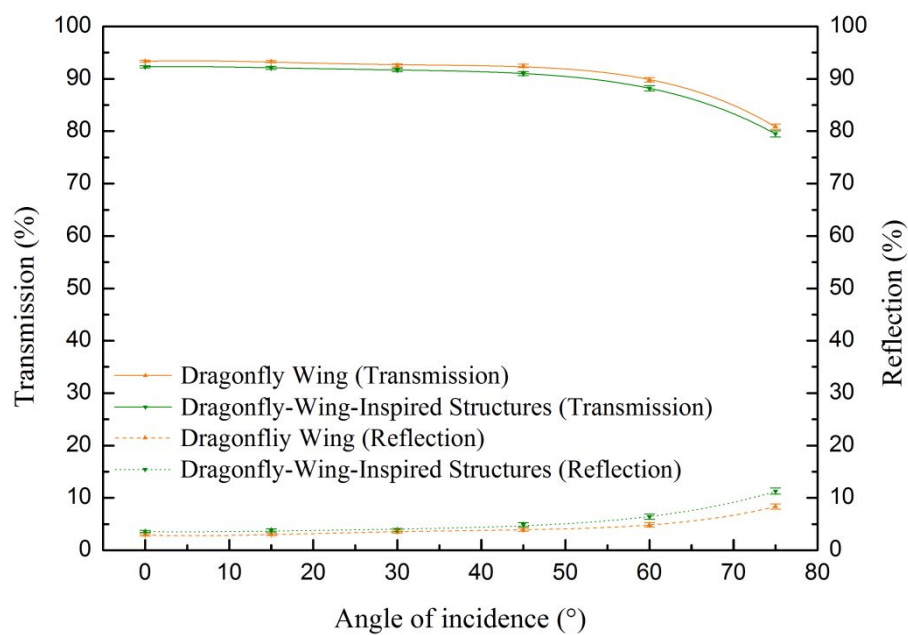


Figure S4. Optical reflection spectra and optical transmission spectra obtained from a dragonfly wing and a PET substrate coated with PET conical structures with a 7.5 min RIE treatment at various incidence angles.