
Supporting information

Reduced Binding Energy and Layer-Dependent Exciton Dynamics in Monolayer and Multilayer WS₂

Yuanshuang Liu[†], Xiangmin Hu[†], Ting Wang[†] and Dameng Liu^{†}*

[†]State Key Laboratory of Tribology, Tsinghua University, Beijing 100084, China

^{*}ldm@tsinghua.edu.cn

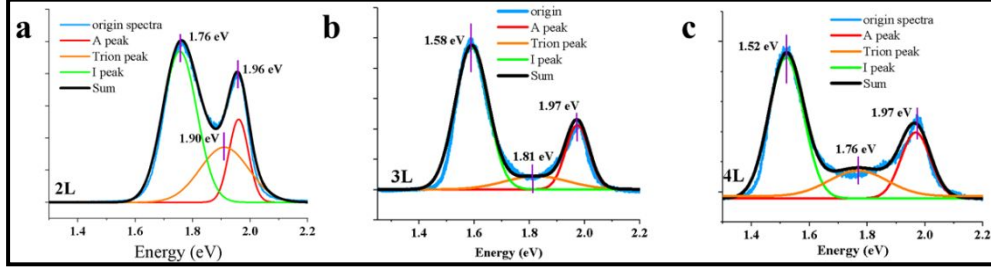


Figure S1. (a-c) show the PL spectra of 2L~4L WS₂ and their corresponding detailed fitted curves.

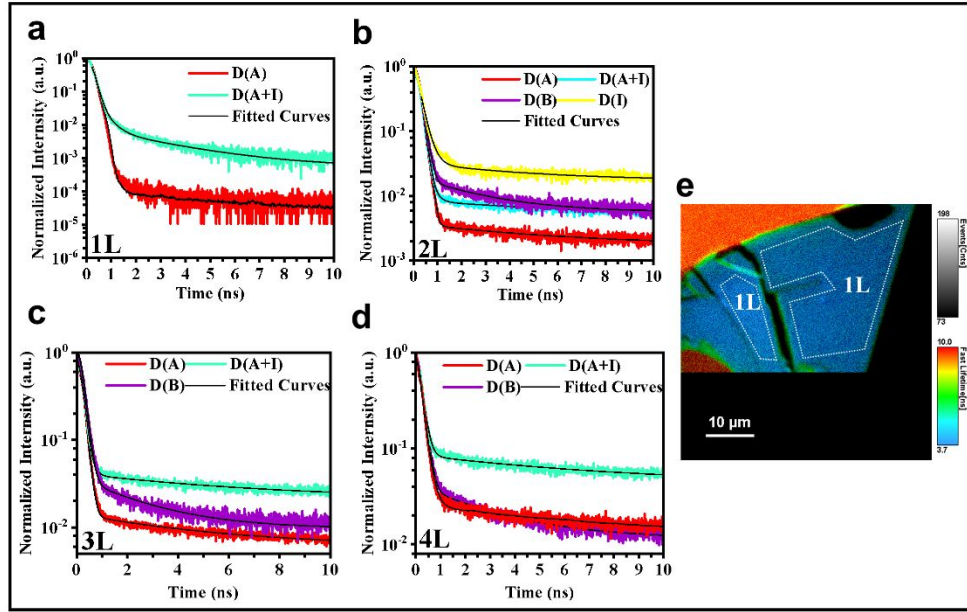


Figure S2. (a)-(d) compare the four decay curves, D(A), D(B), D(I) and D(A+I) in 1L~4L WS₂. (e) FLIM image of ML WS₂.