

## Supporting Information

### Wnt/ $\beta$ -catenin Signaling Pathway Regulates Osteogenesis for Breast

#### Cancer Bone Metastasis:

#### Experiments in an *in vitro* Nanoclay Scaffold Cancer Testbed

Sumanta Kar, Haneesh Jasuja, Dinesh R. Katti, and Kalpana S. Katti\*

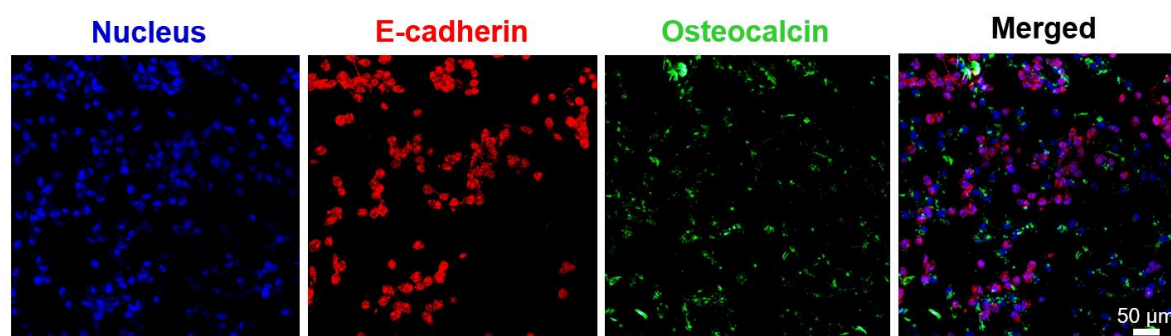
Center for Engineered Cancer Test Beds, Materials and Nanotechnology Program, &  
Department of Civil and Environmental Engineering

North Dakota State University, Fargo ND 58108, USA

\* Author to whom all correspondences should be addressed

[Kalpana.katti@ndsu.edu](mailto:Kalpana.katti@ndsu.edu), Ph: 701-231-9504

#### Supplementary Figure



**Figure S1.** Representative immunofluorescence microscope image of (23+10) days MSCs + MM231 SC after immunostaining for nuclei, e-cadherin and osteocalcin. E-cadherin positive cells are MM 231 while MSCs-derived osteoblasts show little to no osteocalcin staining. Scale bar: 50  $\mu$ m.