

# Supporting Information

Improvement of production and isolation of human neuraminidase-1  
in cellulose crystals

Kotaro Koiwai<sup>†</sup>, Jun Tsukimoto<sup>†</sup>, Tetsuya Higashi<sup>†</sup>, Fumitaka  
Mafuné<sup>§</sup>, Ken Miyajima<sup>§</sup>, Takanori Nakane<sup>||</sup>, Naohiro Matsugaki<sup>†</sup>,  
Ryuichi Kato<sup>†,⊥</sup>, Serena Sirigu<sup>#</sup>, Arjen Jakobi<sup>∇,◊,♦</sup>, Matthias  
Wilmanns<sup>∇</sup>, Michihiro Sugahara<sup>¶</sup>, Tomoyuki Tanaka<sup>¶,§</sup>, Kensuke  
Tono<sup>¶,⊗</sup>, Yasumasa Joti<sup>¶,⊗</sup>, Makina Yabashi<sup>¶,⊗</sup>, Osamu Nureki<sup>||</sup>, Eiichi  
Mizohata<sup>⊙,⊗</sup>, Toru Nakatsu<sup>⊚</sup>, Eriko Nango<sup>¶,§</sup>, So Iwata<sup>¶,§</sup>, Leonard  
M.G. Chavas<sup>#</sup>, Toshiya Senda<sup>†,⊥</sup>, Kohji Itoh<sup>†,\*</sup> and Fumiaki Yumoto<sup>†,\*</sup>

<sup>†</sup>Structural Biology Research Center, Photon Factory, Institute  
of Materials Structure Science, High Energy Accelerator Research  
Organization, 1-1 Oho, Tsukuba, Ibaraki 305-0801, Japan

<sup>‡</sup>Department of Medicinal Biotechnology, Institute for Medicinal  
Research, Graduate School of Pharmaceutical Science, Tokushima  
University, Tokushima, Japan

<sup>§</sup>Department of Basic Science, School of Arts and Sciences, The  
University of Tokyo, Komaba, Meguro, Tokyo 153-8902, Japan

<sup>||</sup>Department of Biological Sciences, Graduate School of Science,  
The University of Tokyo, 7-3-1 Hongo, Bunkyo-ku, Tokyo 113-0033,  
Japan

<sup>⊥</sup>School of High Energy Accelerator Science, SOKENDAI University,  
Tsukuba, Ibaraki 305-0801, Japan

<sup>#</sup>PROXIMA-1, Synchrotron SOLEIL, BP 48, L'Orme des Merisiers,  
91192 Gif-sur-Yvette, France

<sup>∇</sup>Hamburg Unit c/o DESY, European Molecular Biology Laboratory  
(EMBL), Notkestrasse 85, 22607 Hamburg, Germany

○ Structural and Computational Biology Unit, European Molecular Biology Laboratory (EMBL), Meyerhofstrasse 1, 69117 Heidelberg, Germany

◆ Department of Bionanoscience, Delft University of Technology, Van der Maasweg 9, 2629 HZ Delft, The Netherlands

〒 RIKEN SPring-8 Center, 1-1-1 Kouto, Sayo-cho, Sayo-gun, Hyogo 679-5148, Japan

〒 Department of Cell Biology, Graduate School of Medicine, Kyoto University, Yoshidakonoe-cho, Sakyo-ku, Kyoto 606-8501, Japan

⊗ Japan Synchrotron Radiation Research Institute, 1-1-1 Kouto, Sayo-cho, Sayo-gun, Hyogo 679-5198, Japan

⌘ Department of Applied Chemistry, Graduate School of Engineering, Osaka University, 2-1 Yamadaoka, Suita, Osaka 565-0871, Japan

⊕ Japan Science and Technology Agency, PRESTO, 4-1-8 Honcho, Kawaguchi, Saitama 332-0012, Japan.

Σ Graduate School of Pharmaceutical Sciences, Kyoto University, Sakyo, Kyoto 606-8501, Japan

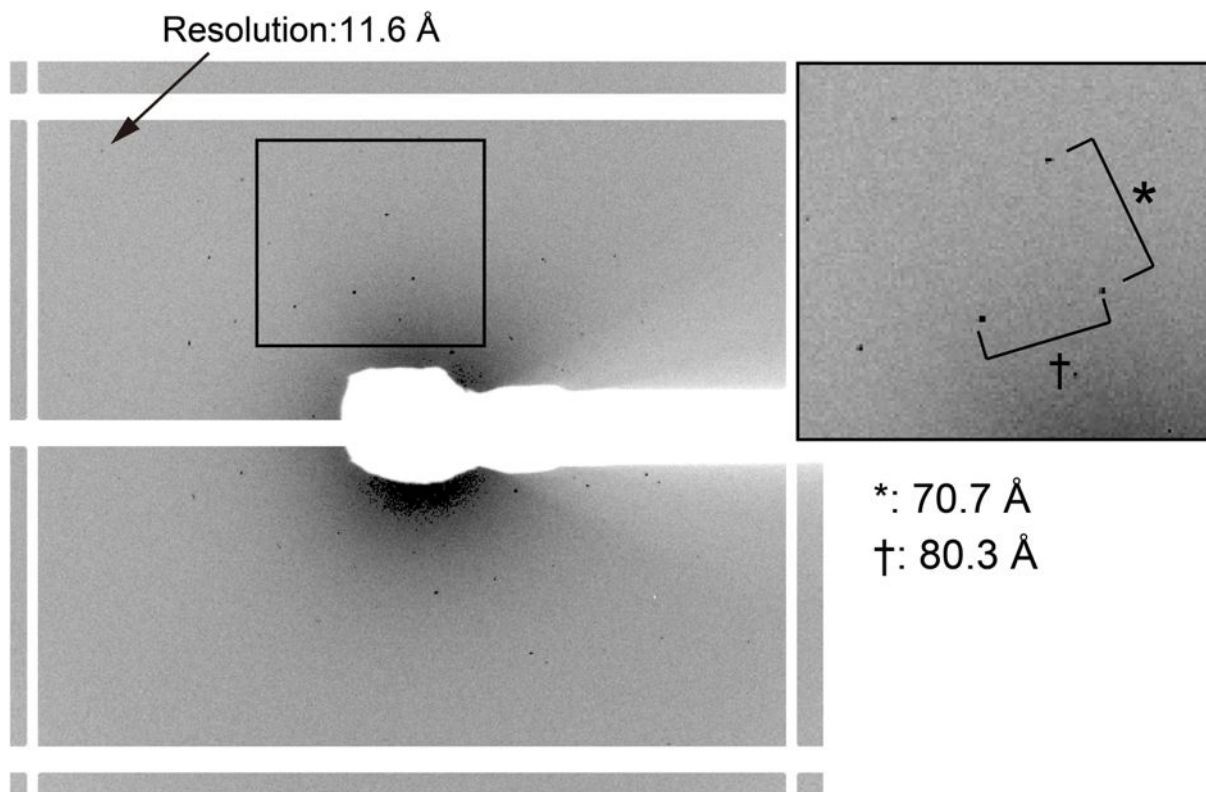
### **Corresponding Author**

\*E-mail: [fumiaki.yumoto1@gmail.com](mailto:fumiaki.yumoto1@gmail.com) Telephone: +81-29-879-6176.  
FAX: +81-29-879-6179

\*E-mail: [kitoh@tokushima-u.ac.jp](mailto:kitoh@tokushima-u.ac.jp) Telephone & FAX: +81-88-633-7290

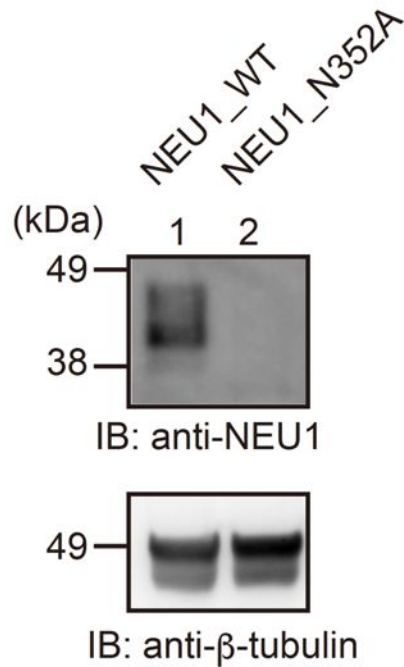
Supporting Table S1 Cell lines used in this study

Cell lines	Organism	Tissue	Characteristics	Reference
293FT	Human	Embryonic kidney	Fast growth	Purchased
293S	Human	Embryonic kidney	Fast growth and <i>GNT1</i> knock out	Purchased
T1	Human	Fibroblast	<i>CSTA</i> knock out	(38)
HeLa	Human	Cervix	Larger than 293 cell lines	Purchased
CHO	Chinese hamster	Ovary		Purchased
293FT_neu1	Human	Embryonic kidney	High neu1 expression	This study



**Supporting figure S1 A diffraction image of a NEU1 crystal taken using synchrotron radiation.**

The indicated regions were enlarged and the distance between the spots was measured with Adxv. The enlarged images were captured with Adxv and reflected vertically.



**Supporting figure S2 Expression of NEU1\_N352A in 293FT cells.**

Proteins in the whole cell lysate of cells transiently expressing the NEU1 wild type (NEU1\_WT) or N352A mutant (NEU1\_N352A) were fractionated by SDS-PAGE, analyzed by western blotting using anti-NEU1 antibody as a primary antibody and HRP-conjugated anti-rabbit antibody as a secondary antibody, or using anti- $\beta$ -tubulin antibody as a primary antibody and HRP-conjugated anti-mouse antibody as a secondary antibody. The molecular weight of the marker is indicated in kilodaltons (kDa).