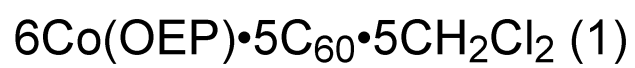
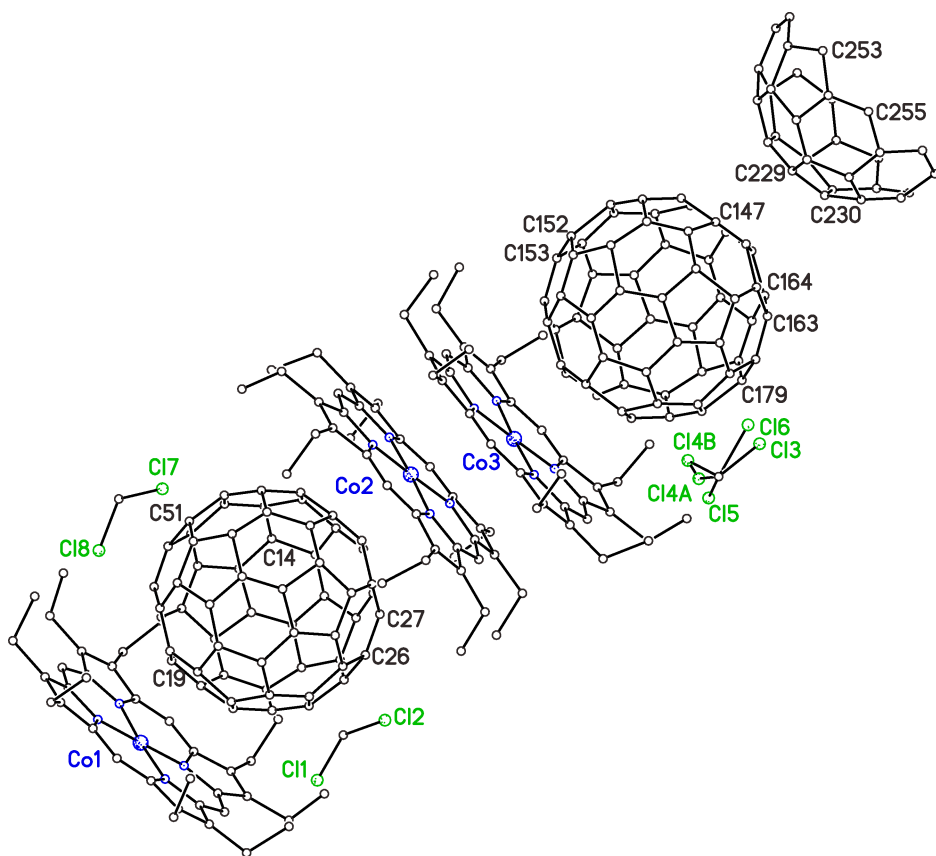


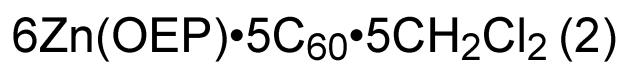
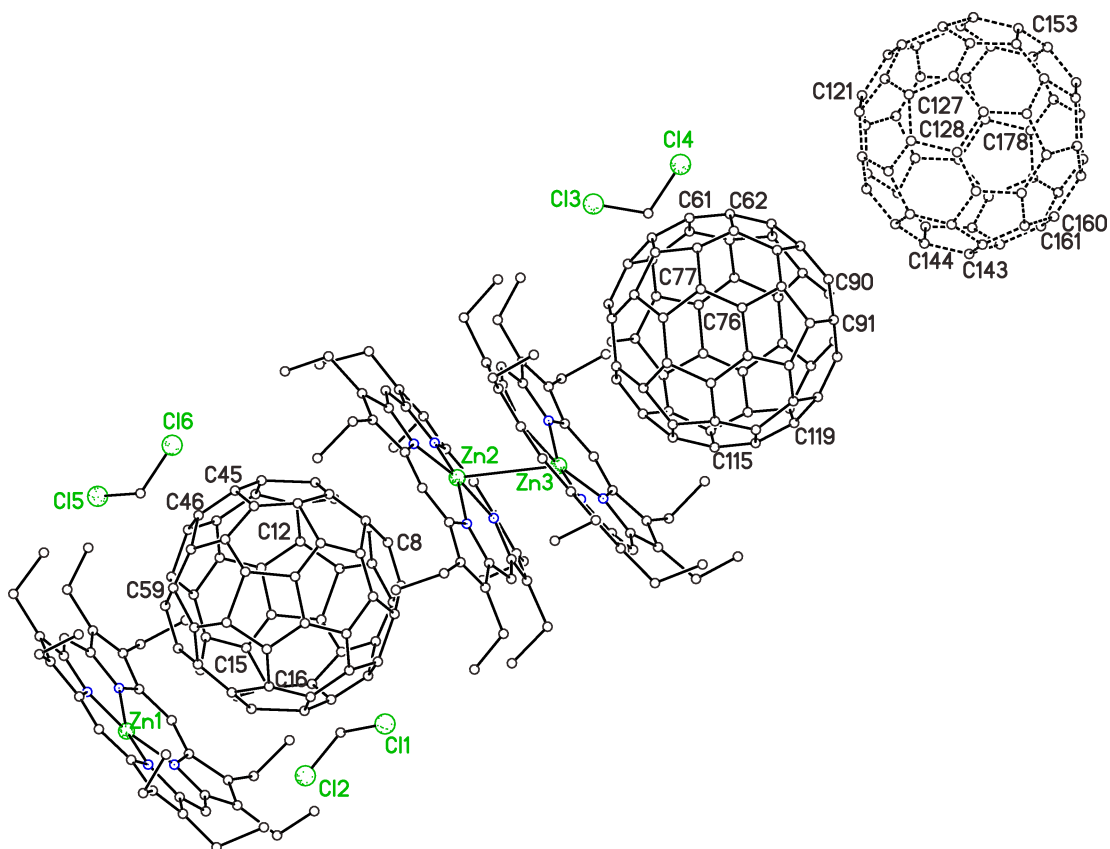
Supporting Information for  
**Metal Ion Effects on Fullerene/Porphyrin Cocrystallization**

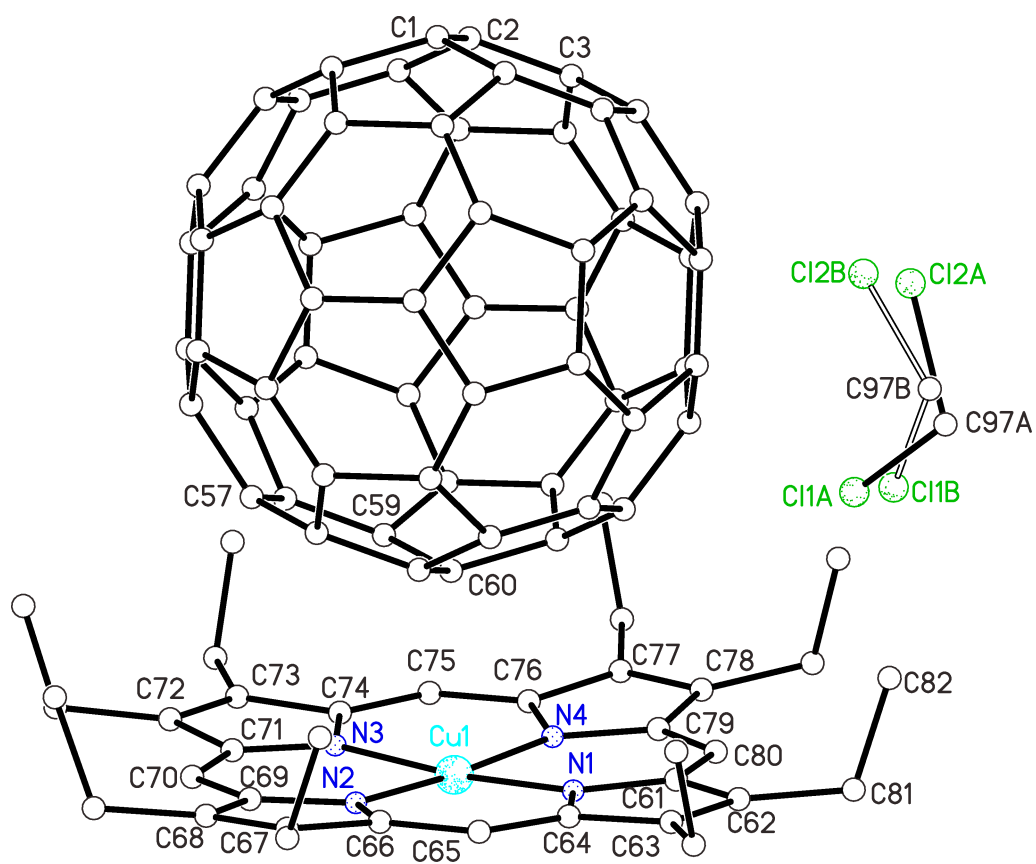
Mrittika Roy, Marilyn M. Olmstead,\* Alan L. Balch\*

Department of Chemistry, University of California, Davis, 95616, USA

Numbered drawings of the structures of compounds (1)-(4)







$\text{Cu(OEP)} \cdot \text{C}_{60} \cdot \text{CH}_2\text{Cl}_2$  (3)

