

Supporting Information on “Replica-exchange umbrella sampling combined with Gaussian accelerated molecular dynamics for free-energy calculation of biomolecules”

Hiraku Oshima[†], Suyong Re[†], Yuji Sugita^{†‡§}*

[†] Laboratory for Biomolecular Function Simulation, RIKEN Center for Biosystems Dynamics Research, Integrated Innovation Building 7F, 6-7-1 Minatojima-minamimachi, Chuo-ku, Kobe, Hyogo 650-0047, Japan

[‡] Theoretical Molecular Science Laboratory, RIKEN Cluster for Pioneering Research, 2-1 Hirosawa, Wako-shi, Saitama 351-0198, Japan

[§] Computational Biophysics Research Team, RIKEN Center for Computational Science, Integrated Innovation Building 7F, 6-7-1 Minatojima-minamimachi, Chuo-ku, Kobe, Hyogo 650-0047, Japan

Corresponding Author:

*E-mail: sugita@riken.jp

Contents:

Three supplementary figures (S1-S3)

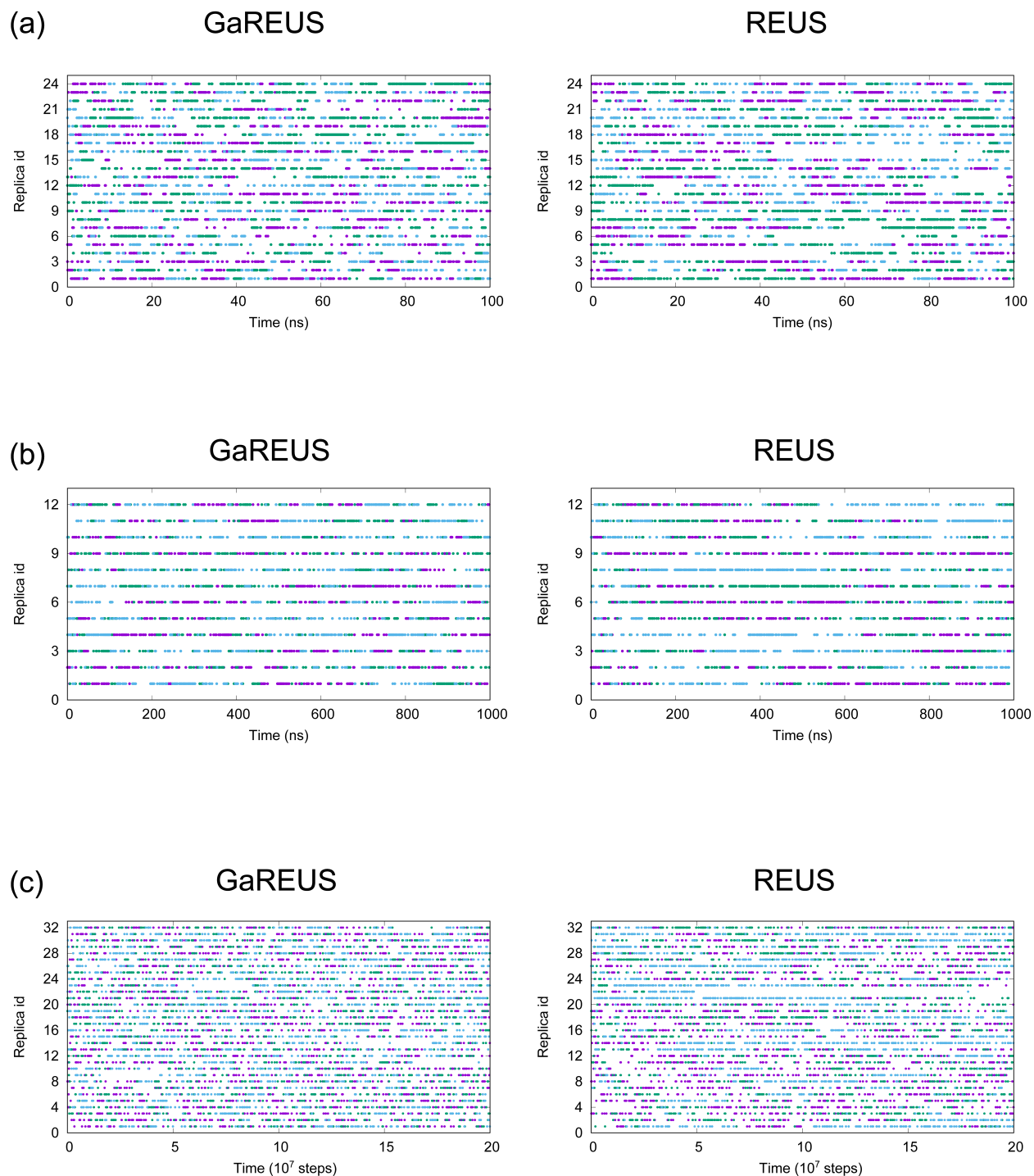


Figure S1. Time series of replica exchanges of parameters in GaREUS and REUS simulations. (a) Bi9. The midpoint values of ω angles -15° (purple), 90° (green), and -150° . (b) Chignolin. The midpoint values $\xi_i = 19 \text{ \AA}$ (purple), 11 \AA (green), and 7 \AA (cyan). (c) AdK. The midpoint values $\xi_i = 30 \text{ \AA}$ (purple), 24.5 \AA (green), and 20.5 \AA (cyan).

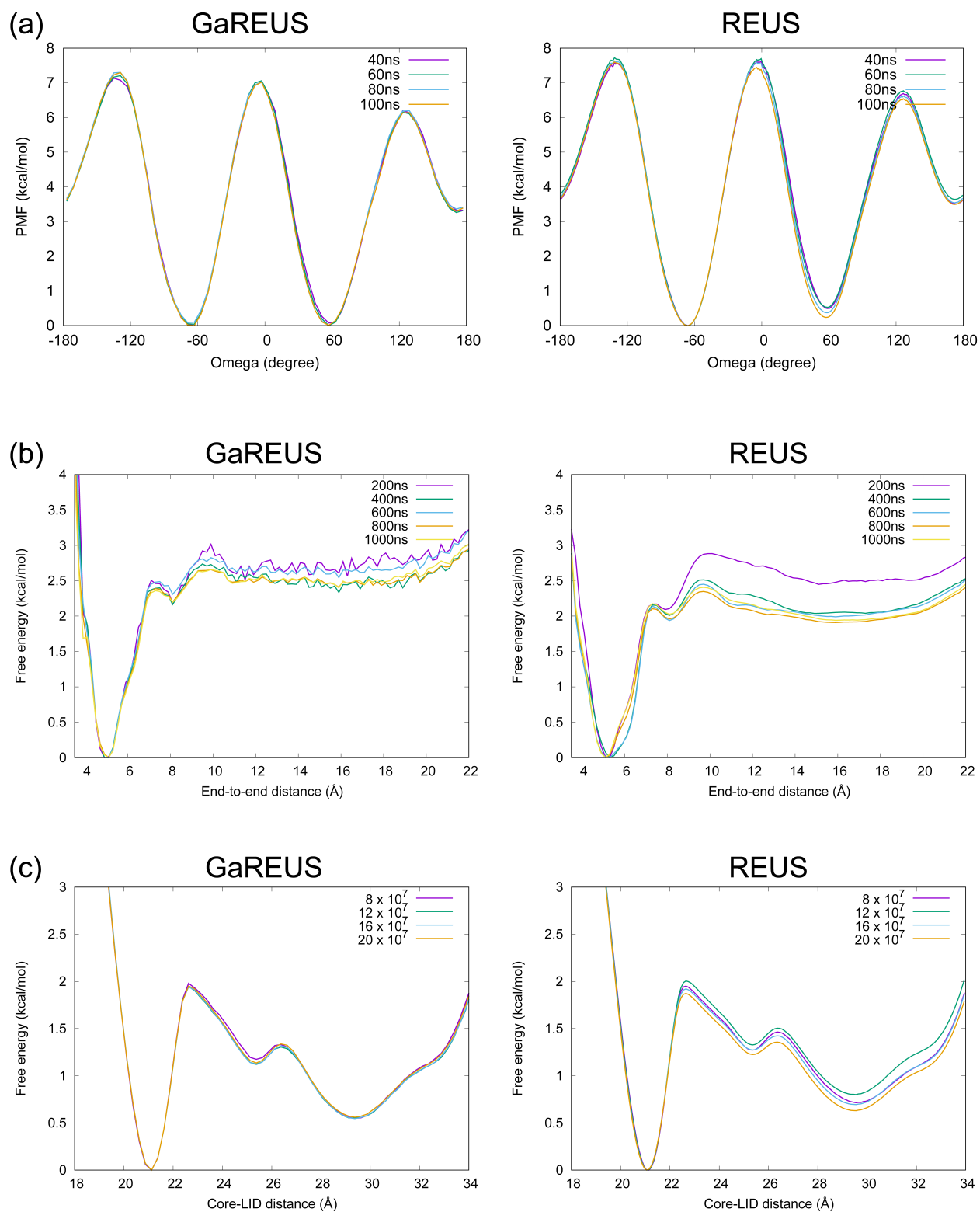


Figure S2. Free-energy landscapes of GaREUS and REUS along the CV for (a) Bi9, (b) chignolin, and (c) AdK.

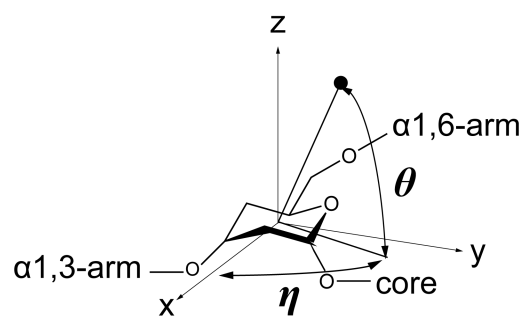


Figure S3. Definition of the spherical coordinate. The angle η represents swing motion of the $\alpha 1,6$ -arm around the z (polar) axis, while the angle θ represents up down motion with respect to the xy-plane.