

Supporting Information

The Impact of Mutations on NPAC Structural Dynamics: Mechanistic Insights from MD Simulations

Marco Montefiori,¹ Simona Pilotto,² Chiara Marabelli,² Elisabetta Moroni,¹ Mariarosaria Ferraro,¹ Stefano A. Serapian,³ Andrea Mattevi,^{2,*} Giorgio Colombo^{1,3,*}

1) ICRM-CNR, Via Mario Bianco 9, 20131 Milano, Italy.

2) Department of Biology and Biotechnology, University of Pavia, Via Ferrata 9, 27100 Pavia, Italy

3) University of Pavia, Department of Chemistry, V.le Taramelli 12, 27100 Pavia, Italy.

Corresponding authors

*E-mail: andrea.mattevi@unipv.it; g.colombo@unipv.it

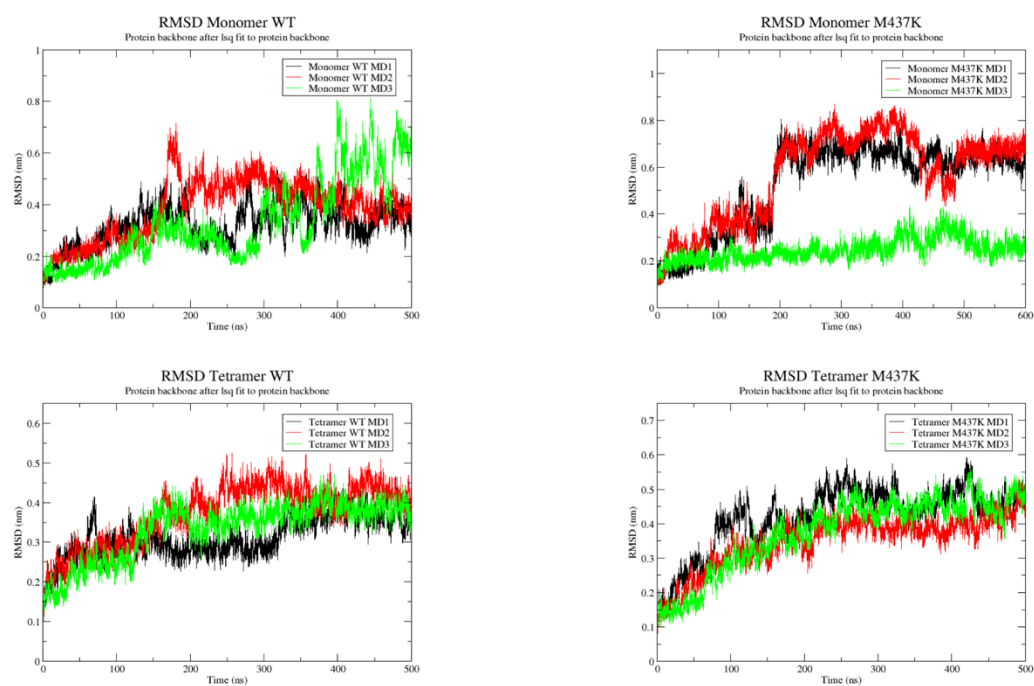


Figure S1. Time evolution of backbone RMSD from the original crystal structure. All residues are considered in the calculation.

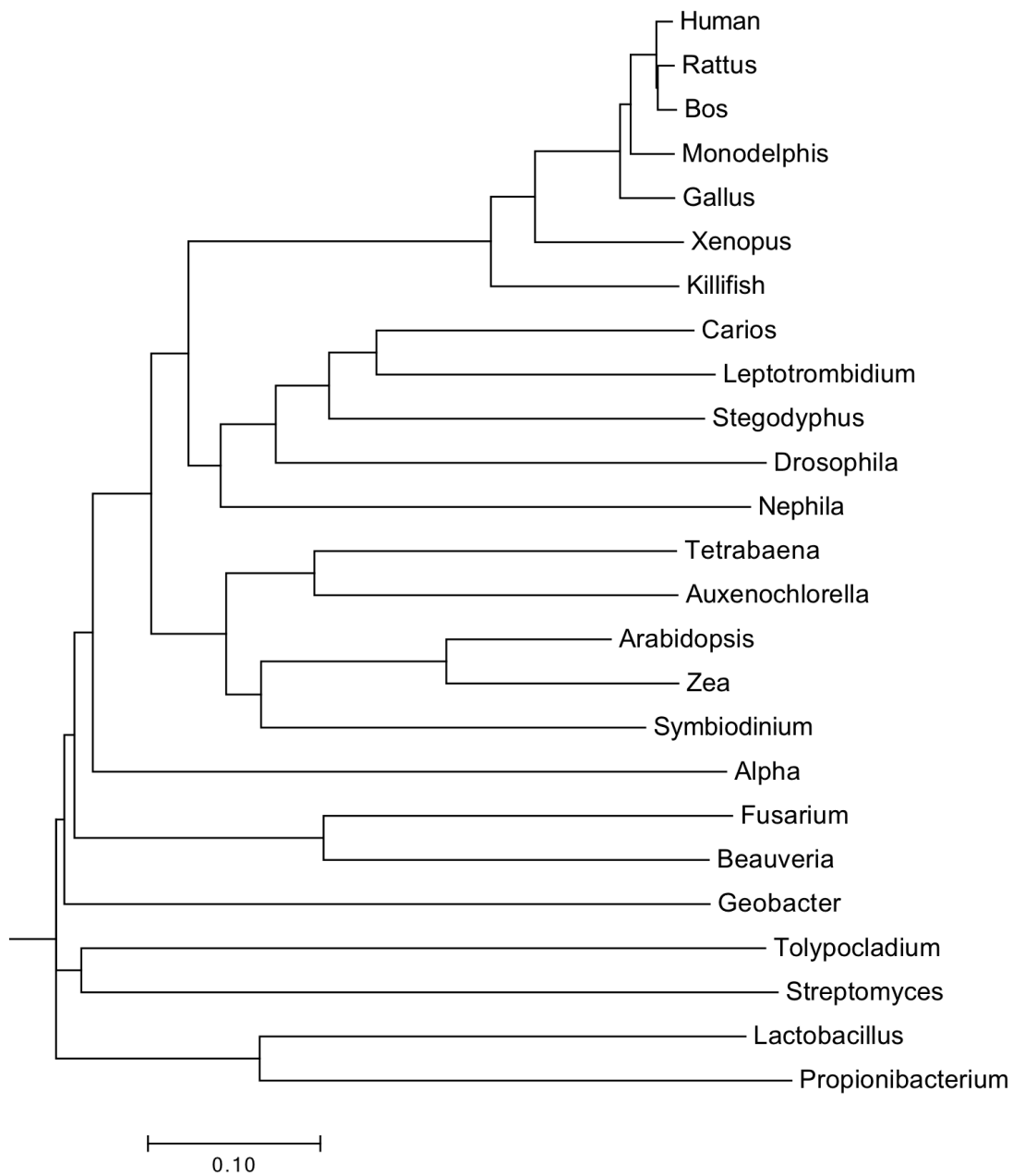


Figure S2. The evolutionary tree of the NPAC sequences obtained via the alignment procedure described in the main text.