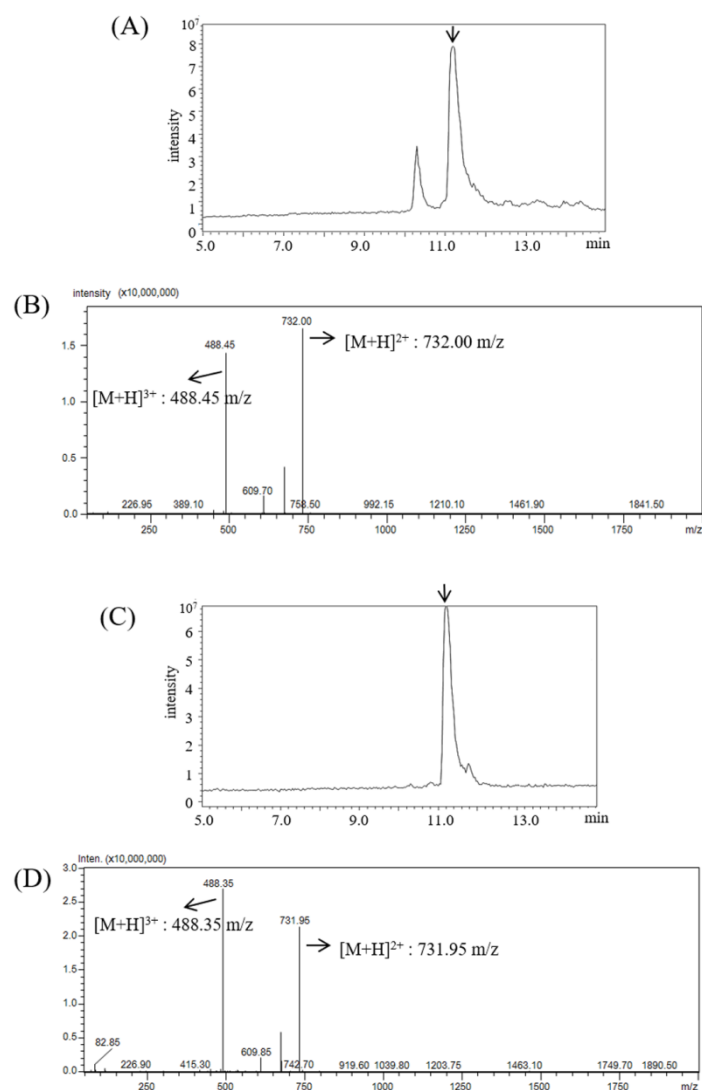


**Supplementary Fig. 1 MALDI-TOF/TOF-MS analysis of the Fr 2 peptide.**

(A) The peptide in Fr 2 was purified as a single peak using HPLC. (B) MALDI-TOF/TOF mass spectra of m/z 1461 with H ion and reference with database. (C) MALDI-TOF/TOF mass spectra of m/z 1483 with Na ion and reference with the database.



**Supplementary Fig. 2 LC-MS analysis of the purified Fr 2 peptide and the synthesized KEMPFKYPVEP peptide.**

(A) and (C) Total ion chromatogram of the purified Fr 2 and synthesized KEMPFKYPVEP peptides. (B) and (D) ESI-MS spectra of the purified Fr 2 and synthesized KEMPFKYPVEP peptides.