

Supporting Information

The mechanism of stiff substrates up-regulate cultured neuronal network activity

Yang Yu, Sisi Liu, Xiaoan Wu, Zhang Yu, Yishi Xu, Weijiang Zhao, Ilya Zavodnik,

Jinping Zheng, Chen Li, Hucheng Zhao

Pages: 1

Figures: 1

Figure S1

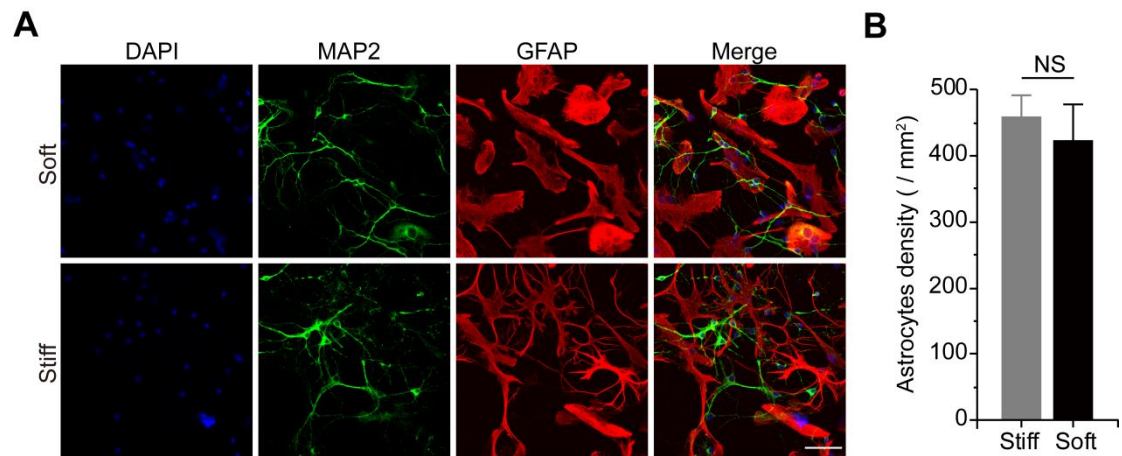


Figure S1. Hippocampal neuron culture on the stiff and soft substrate. (A) Representative fluorescent confocal images showing neurons and astrocytes stained with MAP2 and GFAP respectively (scale bar: 50 μm). (B) Density of astrocytes (GFAP-positive) in the hippocampal neuronal cultures on stiff and soft substrates. The final density of astrocytes was calculated by six random fields from three independent experiments. NS denotes no significant difference.