

## Supporting Information

# Particle Size Control in Miniemulsion Polymerization via Membrane Emulsification

Nida Nauman,<sup>a,b</sup> Neomy Zaquen,<sup>a,c,d</sup> Tanja Junkers,<sup>d,e</sup> Cyrille Boyer,<sup>a,c</sup> and Per B. Zetterlund\*,<sup>a</sup>

<sup>a</sup> *Centre for Advanced Macromolecular Design (CAMD) School of Chemical Engineering, The University of New South Wales, High Street Gate 2, 2033 Kensington, Sydney, NSW, Australia.*

<sup>b</sup> *Department of Polymer and Process Engineering, University of Engineering and Technology, G.T. Road, 54890 Lahore, Punjab, Pakistan.*

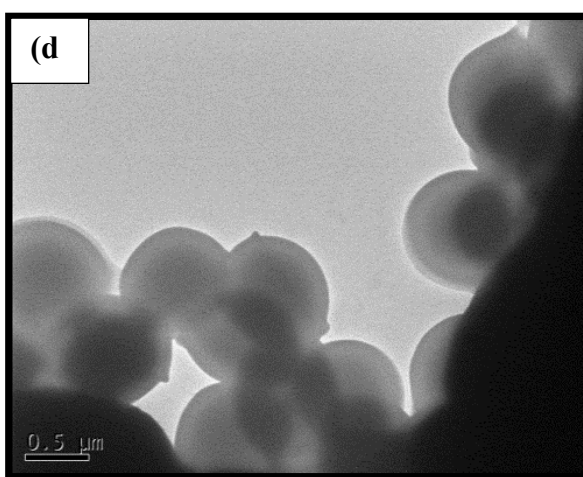
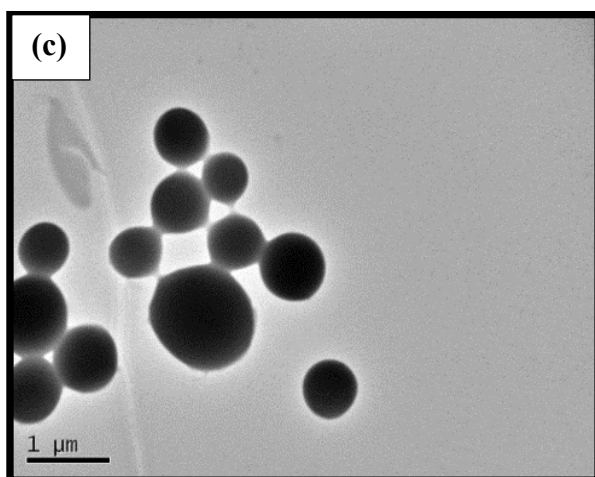
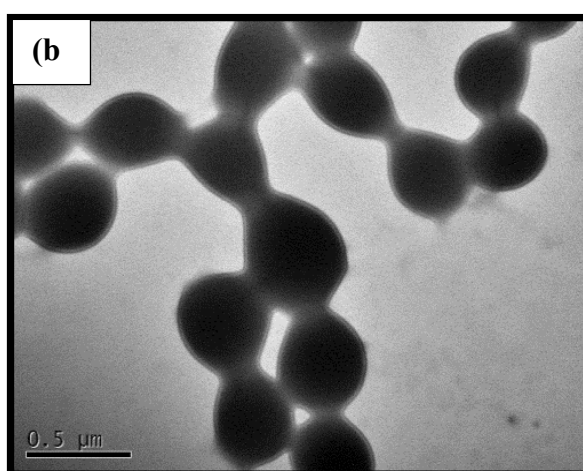
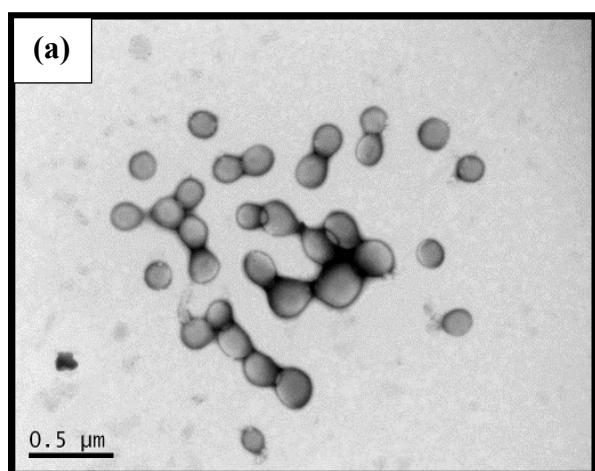
<sup>c</sup> *Australian Centre for Nanomedicine, The University of New South Wales, High Street Gate 2, 2033 Kensington, Sydney, NSW, Australia.*

<sup>d</sup> *Institute for Materials Research (IMO-IMOMEC), Universiteit Hasselt, Agoralaan Building D, B-3590 Diepenbeek, Belgium.*

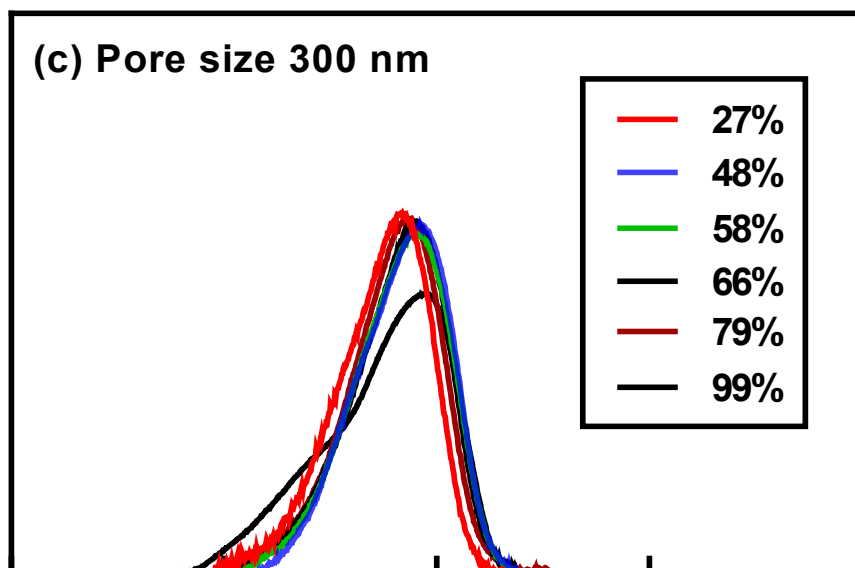
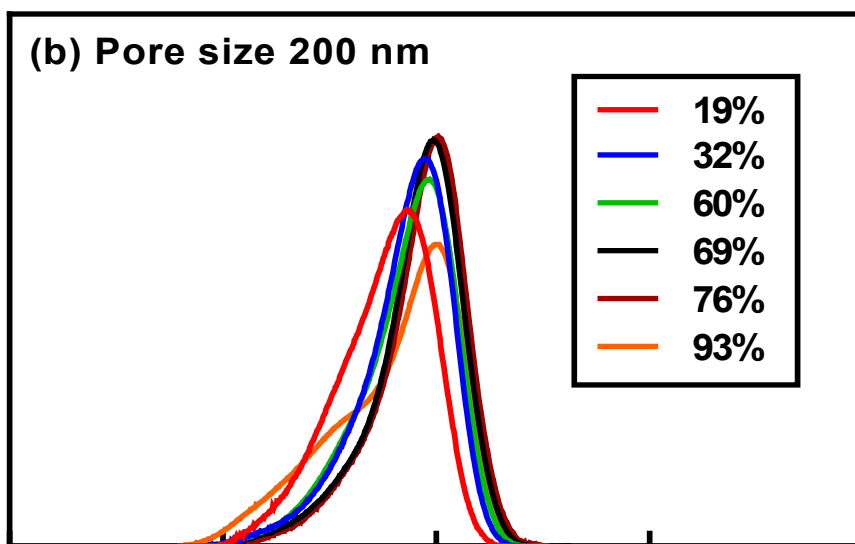
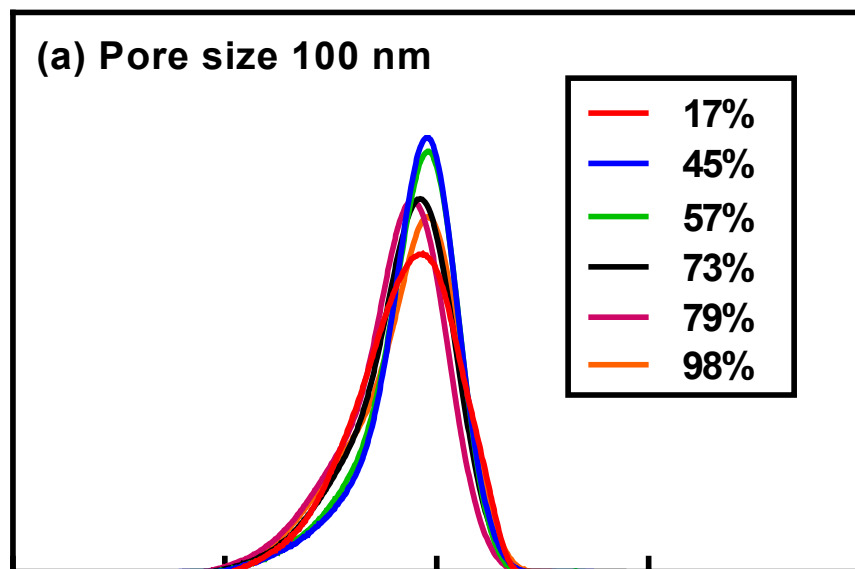
<sup>e</sup> *Polymer Reaction Design Group, School of Chemistry, 19 Rainforest Walk, Monash University, VIC 3800, Melbourne, Australia.*

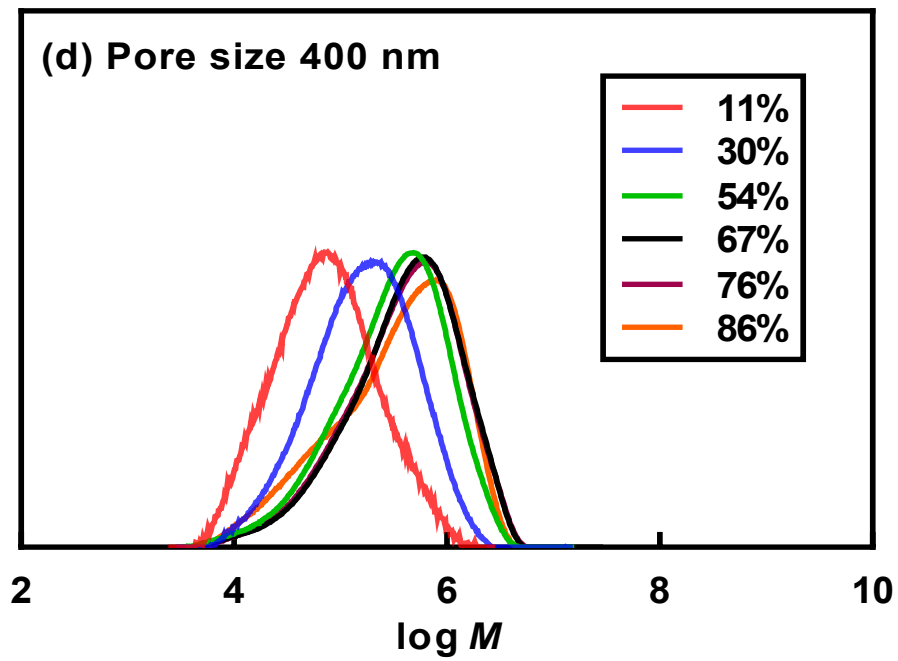


**Fig. S1.** SPG membrane emulsification experimental set up.



**Fig. S2.** TEM images of polymer particles for pore size: (a) 100 (b) 200 (c) 300 and (d) 400 nm (Runs 4–7; Table 1).





**Fig. S3.** Molecular weight distributions ( $w(\log M)$  vs  $\log M$ ) for LPO initiated polymerization for pore size (a) 100 (b) 200 (c) 300 and (d) 400 nm.