

Supporting Information

Laser-Assisted Multiscale Fabrication of Configuration-Editable Supercapacitors with High Energy Density

*Jian Gao^a, Changxiang Shao^a, Shengxian Shao^a, Congcong Bai^a, Ur rehman Khalil^a,
Yang Zhao^{a,*}, Lan Jiang^b, Liangti Qu^{a,c,*}*

^a Key Laboratory of Photoelectronic/Electrophotonic Conversion Materials, School of Chemistry, Beijing Institute of Technology, Beijing 100081, P. R. China

^b Laser Micro-/Nano-Fabrication Laboratory, School of Mechanical Engineering, Beijing Institute of Technology, Beijing 100081, P. R. China

^c Key Laboratory for Advanced Materials Processing Technology, Ministry of Education of China, State Key Laboratory of Tribology, Department of Mechanical Engineering, Tsinghua University, Beijing 100084, P. R. China.

* Corresponding authors. E-mail: yzhao@bit.edu.cn, lqu@bit.edu.cn

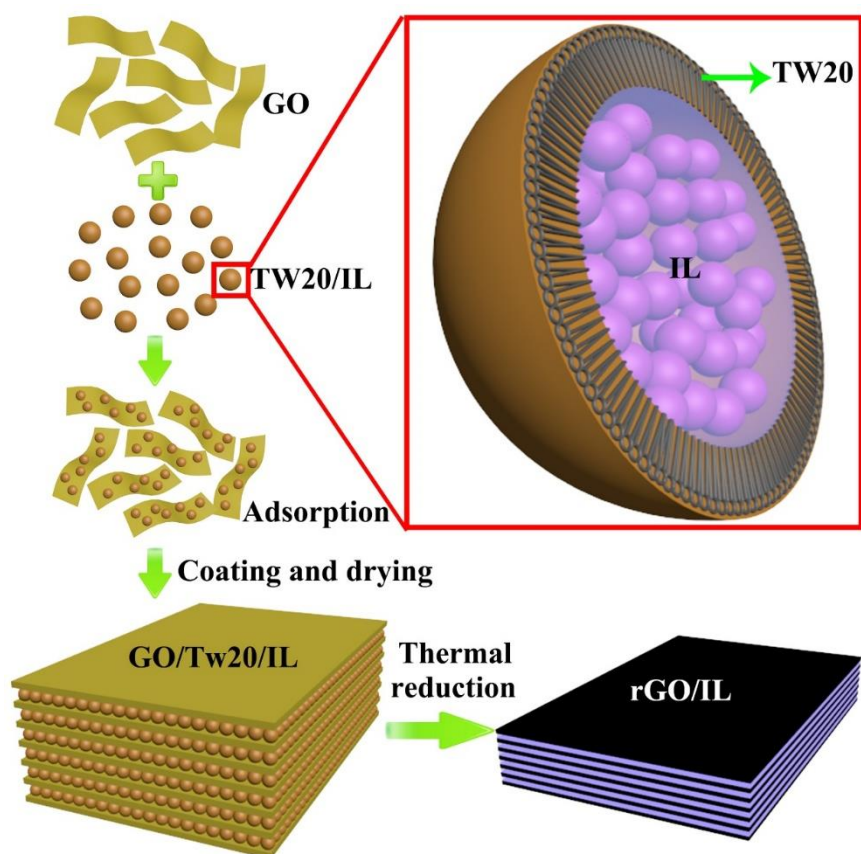


Figure S1 Schematic illustration of the preparation of rGO/IL/CP film.

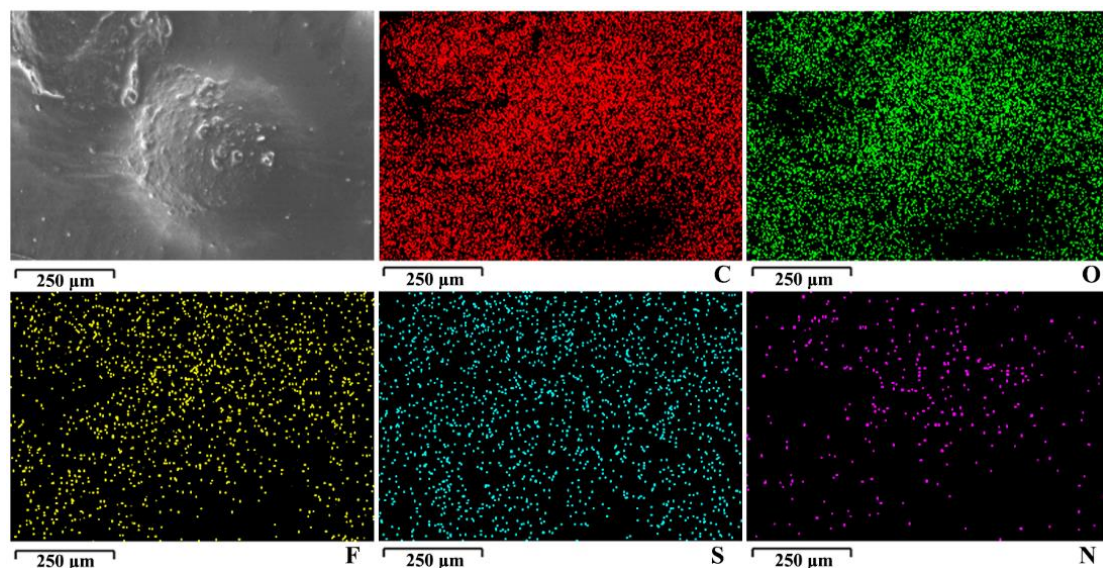


Figure S2 The sectional SEM image and the corresponding C, F, S, O and N elemental mappings for GO/TW20/IL/CP before calcination.

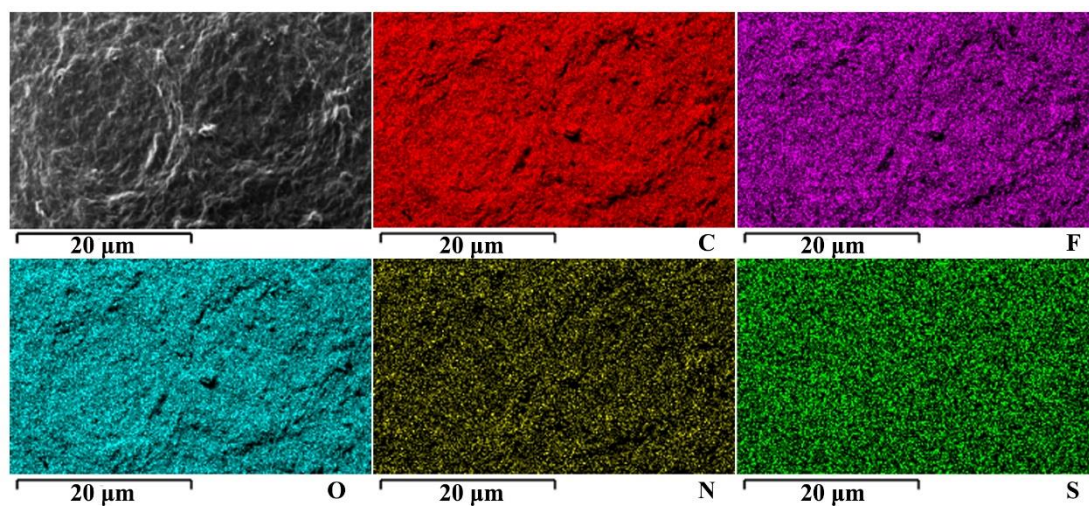


Figure S3 SEM image and the corresponding C, F, O, N and S elemental mappings for rGO/IL/CP after calcination.

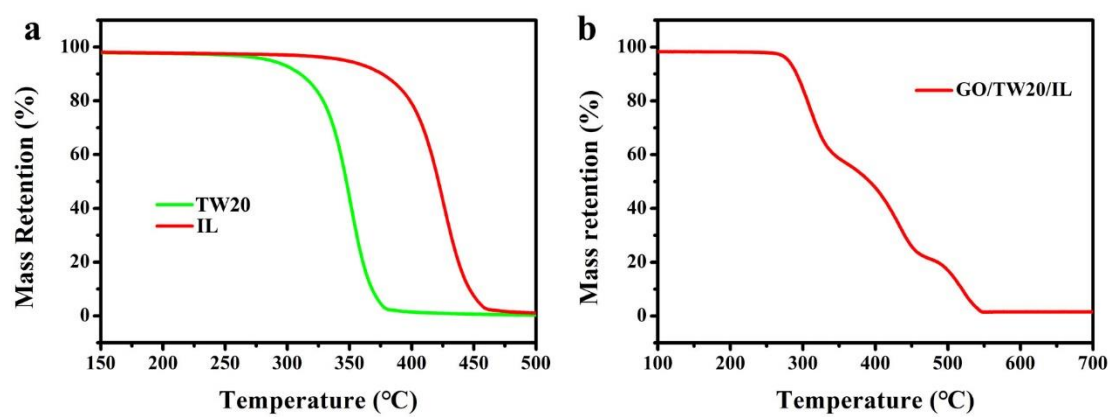


Figure S4 TGA plots of a) IL and TW 20, b) the GO/TW20/IL film in the air.

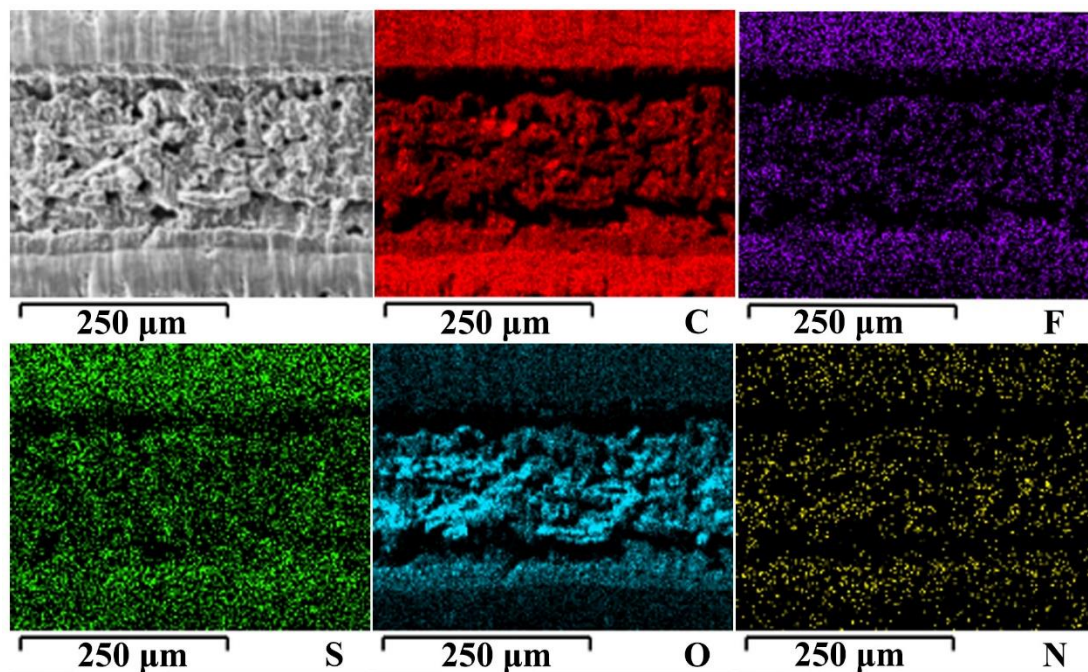


Figure S5 The sectional SEM image and the corresponding C, F, S, O and N elemental mappings for macro-supercapacitor after LDW process.

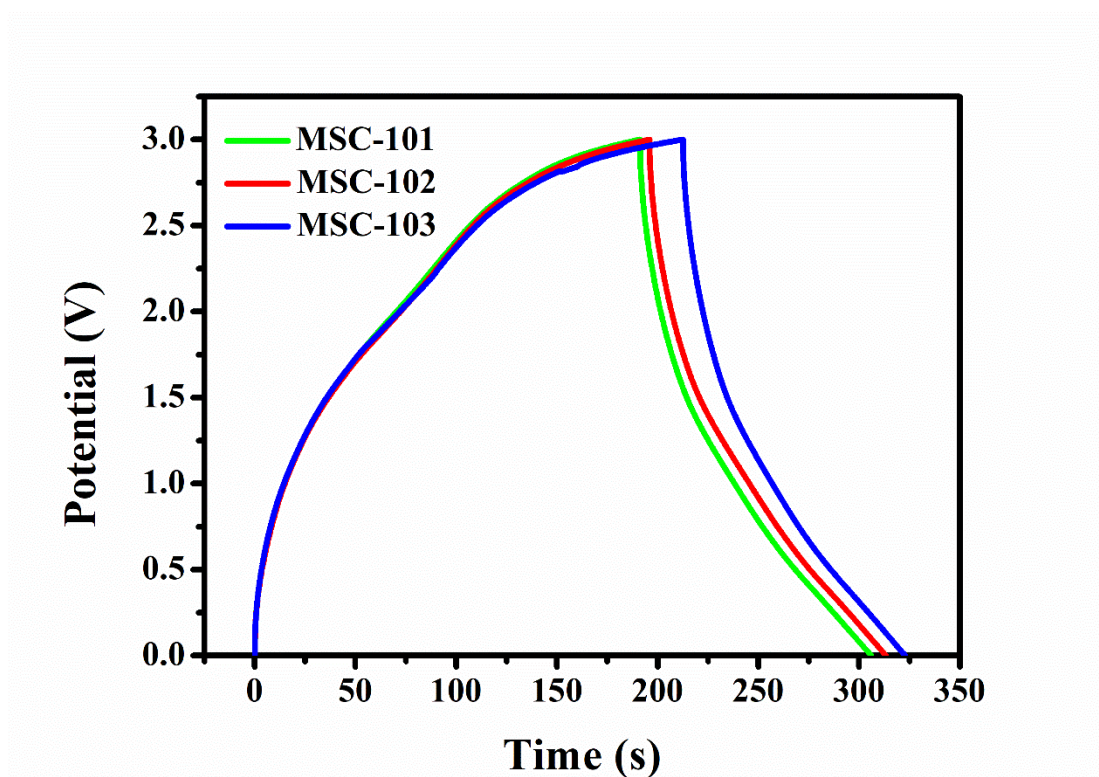


Figure S6 The GCD curves of the MSC with various filter paper types (MSC-101, MSC-102, MSC-103).

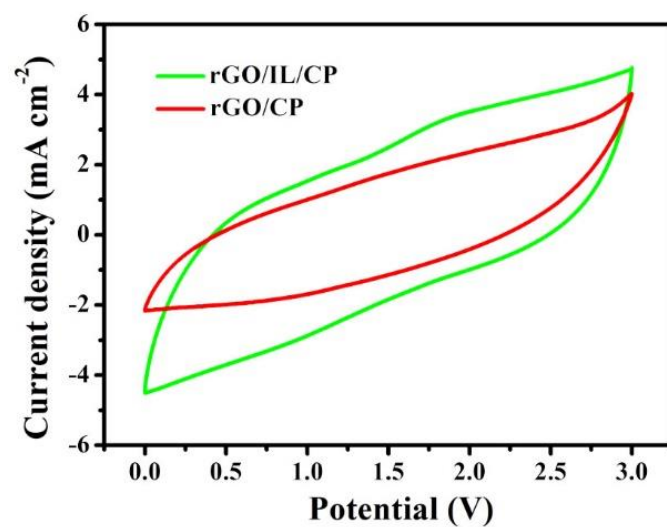


Figure S7 The CV curves of the MSCs based on the rGO/IL/CP and rGO/CP film.



Figure S8 The photographs of the 3D paper carving box and its components.

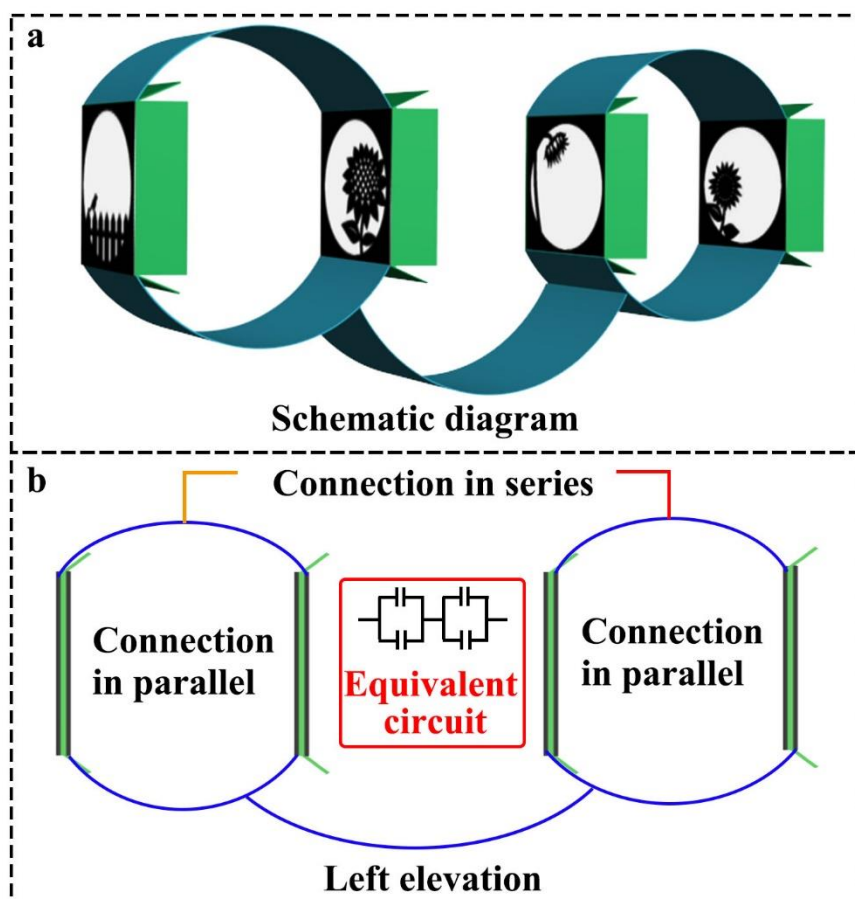


Figure S9 The circuit diagram of the paper carving box.