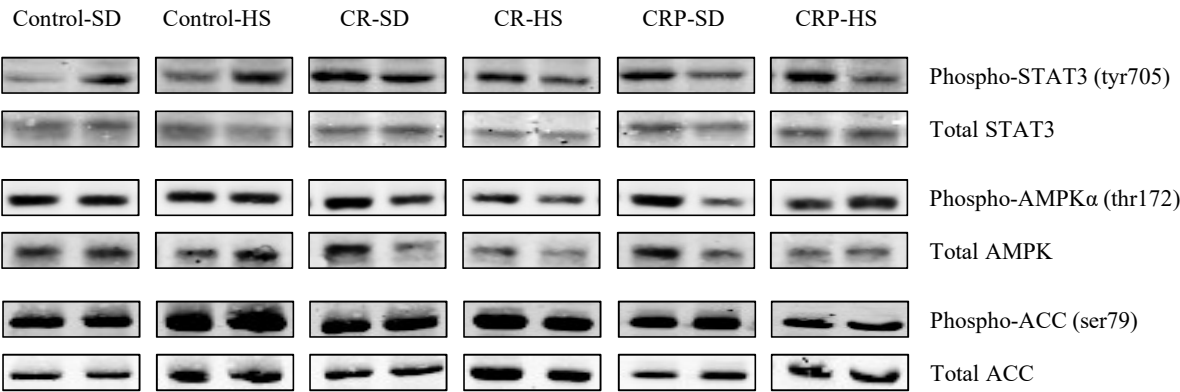


Figure S2



Representative bands of western blots performed to analyze phospho and total STAT3, AMPK and ACC levels in liver samples, related to Figure 2B. Two bands are shown for each experimental condition. SD: standard diet, HS: high sucrose diet, CR: offspring of calorie restricted dams, P (in CRP) indicates high-esterified pectin supplementation of the offspring. The specific amino acids phosphorylated of the protein forms recognized by the antibodies used are indicated in parenthesis.