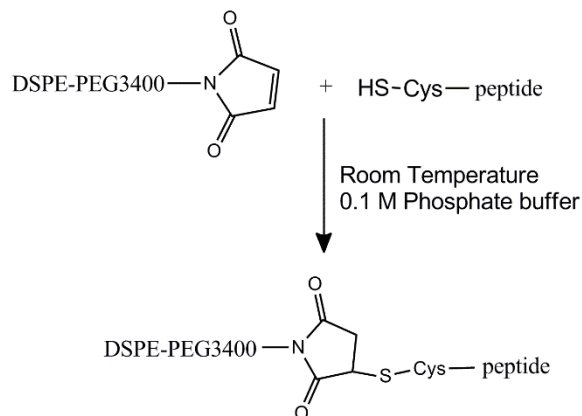
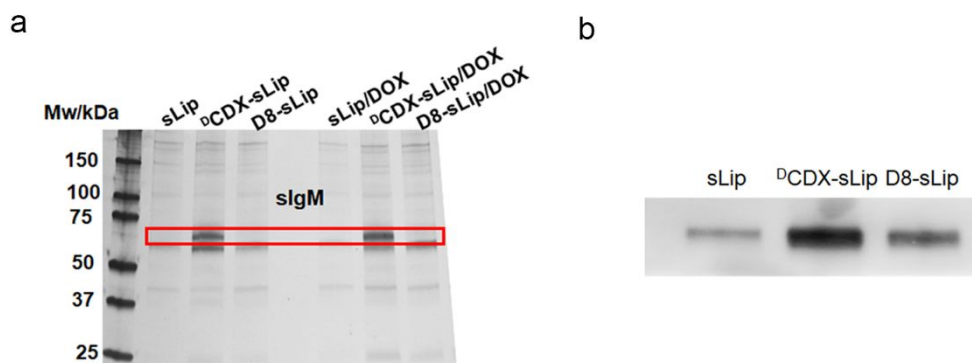


Short peptide mediated brain targeted drug delivery with enhanced immunocompatibility

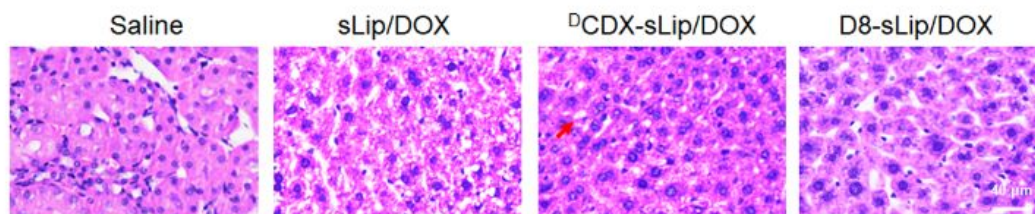
Supporting information



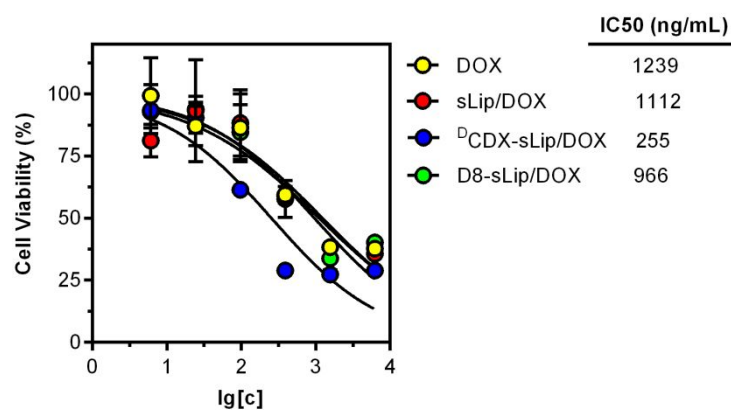
Supplementary Figure S1. Scheme of the chemical synthesis of peptide conjugated PEG3400-DSPE.



Supplementary Figure S2. Protein corona formed on doxorubicin loaded liposomes after incubation with mouse serum at 37°C for 1 h. a. Separation and staining of protein corona using SDS-PAGE. b. western blot assay of natural IgM absorbed on the surface of liposomes.



Supplementary Figure S3. Microscopic observation of liver slices after H&E staining.



Supplementary Figure S4. Cytotoxicity assay. U87 cells were incubated with different formulations of doxorubicin (free doxorubicin, sLip/DOX, ^DCDX-sLip/DOX, D8-sLip/DOX) of different concentrations and cell viability was measured after 96 h by MTS assay. IC50 values were calculated by GraphPad Prism 6.0 (n = 5).

Supplementary table S1. Peptide sequence.

Peptide	Sequence	Length (AA)
^D CDX	G ^D R ^D E ^D I ^D R ^D TG ^D R ^D A ^D E ^D R ^D W ^D S ^D E ^D K ^D F	16
D8	^D RTG ^D R ^D A ^D RE ^D W	8