

Analysis of polyphenols in Lamiaceae family by MSPD extraction followed by UHPLC-MS/MS determination

Maria Chiara Simeoni^{a‡}, Marika Pellegrini^{a‡}, Manuel Sergi^{a}, Paola Pittia^a, Antonella Ricci^a
and Dario Compagnone^a*

^a University of Teramo, Faculty of Bioscience and Technologies for Food, Agriculture and Environment, Via Renato Balzarini, 1, 64100, Teramo, Italy.

KEYWORDS: extraction/isolation; Lamiaceae; matrix effect; MSPD; polyphenolic compounds; UHPLC-MS/MS;

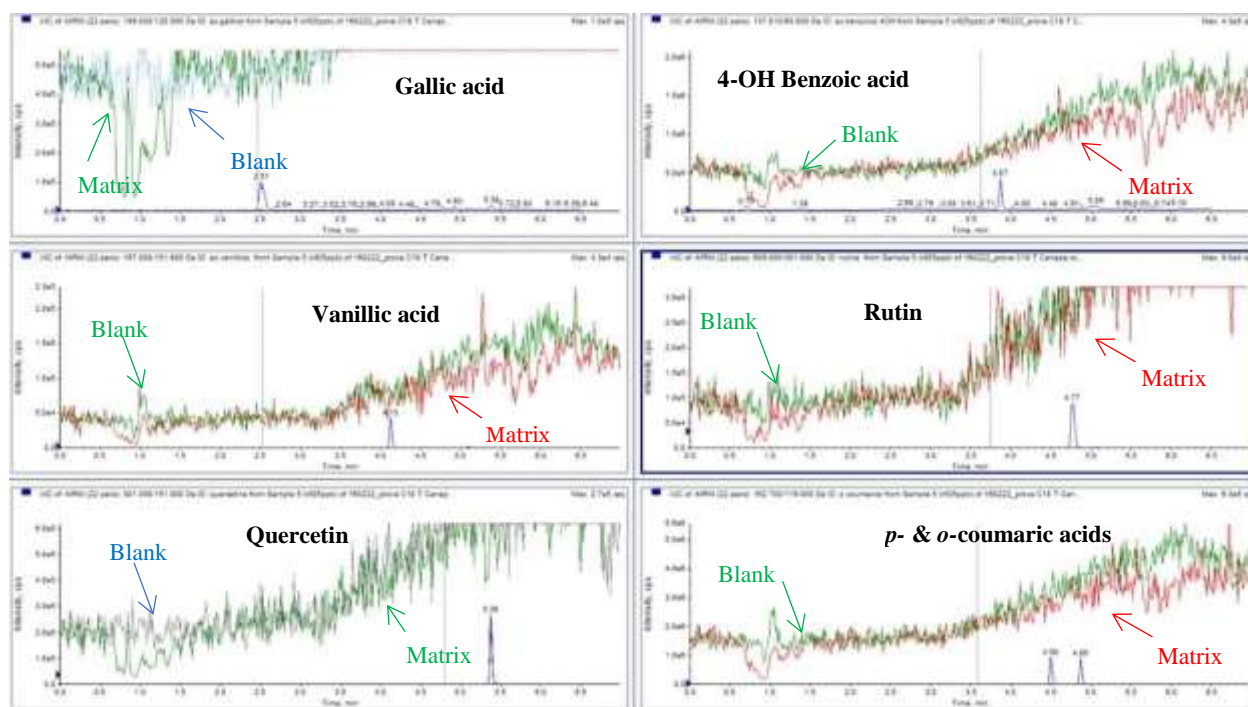


Figure S1 - Extracted ion currents (XICs) of blank, *Ocimum basilicum* L. matrix and phenolic compounds