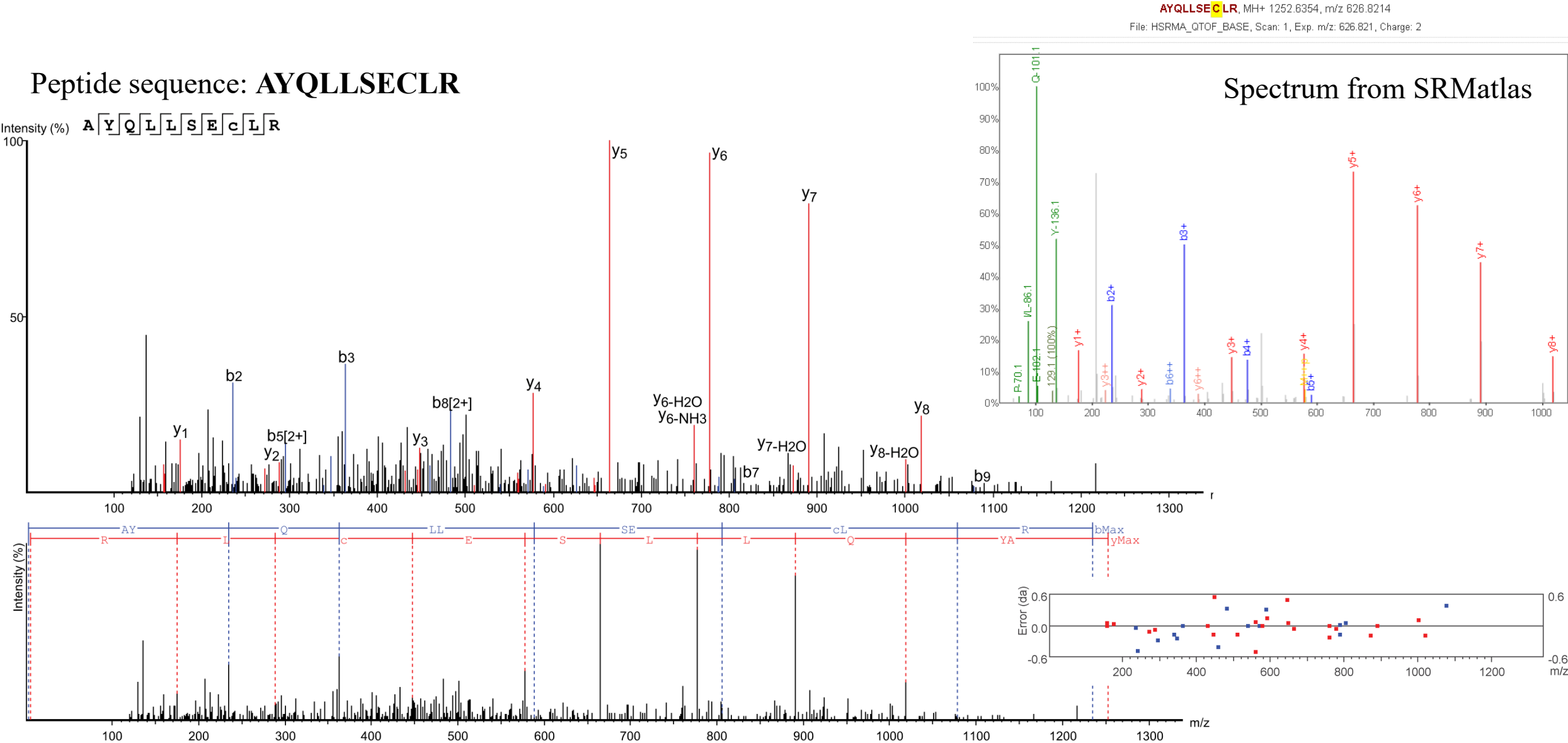


Supporting Figure S2. Annotated spectra of the peptides matching to METTL12 identified in U2-OS cells and corresponding spectra downloaded from the SRMatlas database.

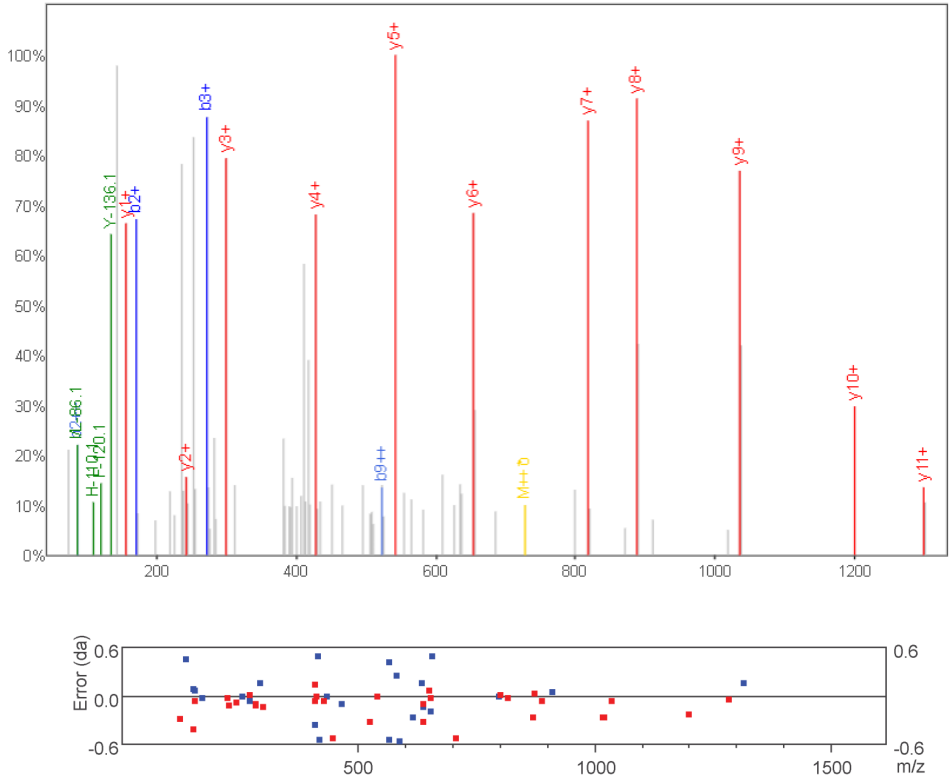
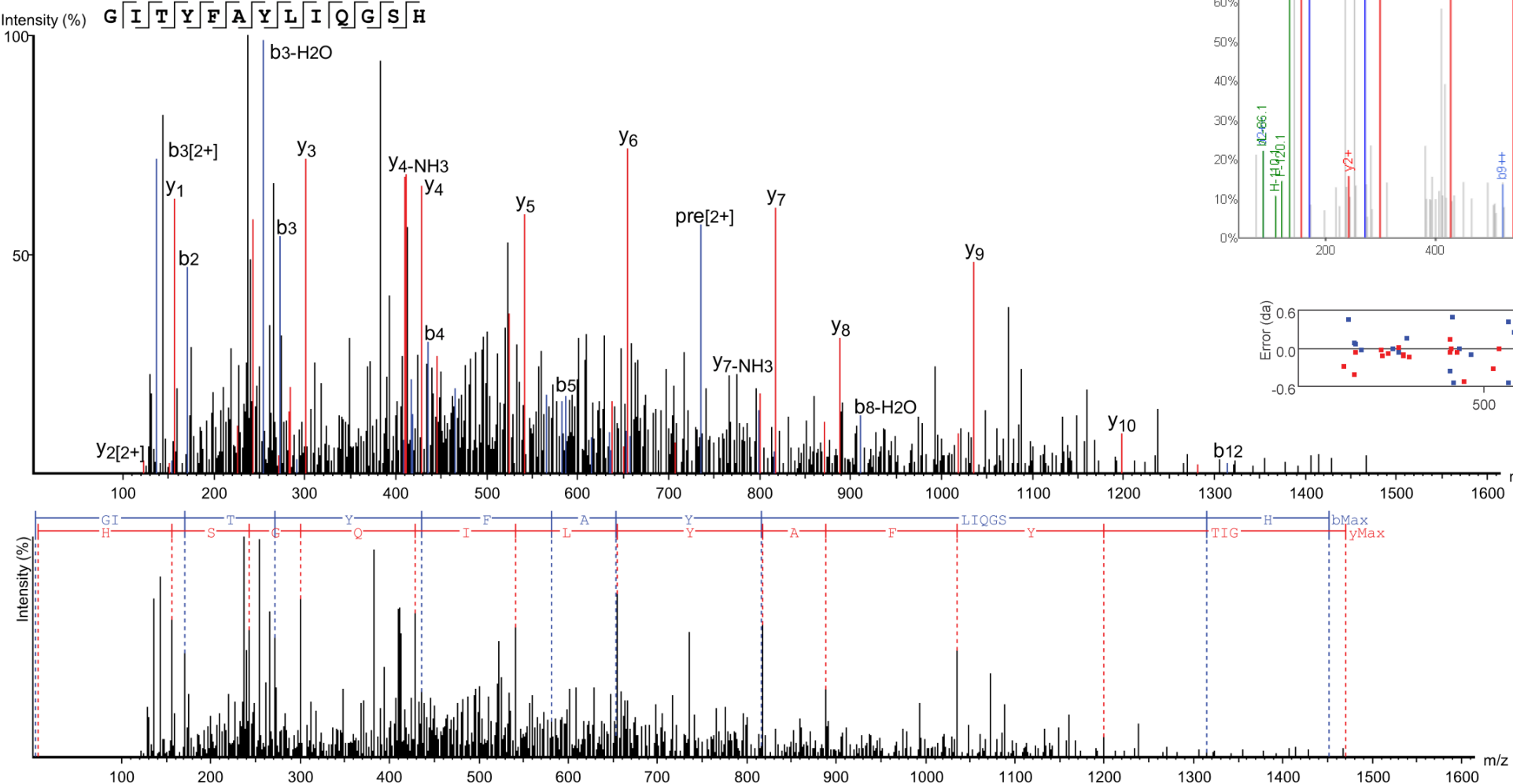


Spectrum from SRMatlas

GITYFAYLIQGSH, MH+ 1469.7423, m/z 735.3748

File: HSRMA_QTOF_BASE, Scan: 1, Exp. m/z: 735.375, Charge: 2

Peptide sequence: GITYFAYLIQGSH



VLNPQGTLIQFSDEDPDVR, MH+ 2143.0666, m/z 1072.0369

