

Effects of Polyethylenimine and Its Molecular Weight on the Chemical Bath Deposition of ZnO Nanowires

Romain Parize,[†] Jérôme Daniel Garnier,[†] Estelle Appert,[†] Odette Chaix-Pluchery,[†] and Vincent Consonni^{*,†}

[†] Univ. Grenoble Alpes, CNRS, Grenoble INP, LMGP, F-38000 Grenoble, France

***Corresponding authors:** vincent.consonni@grenoble-inp.fr

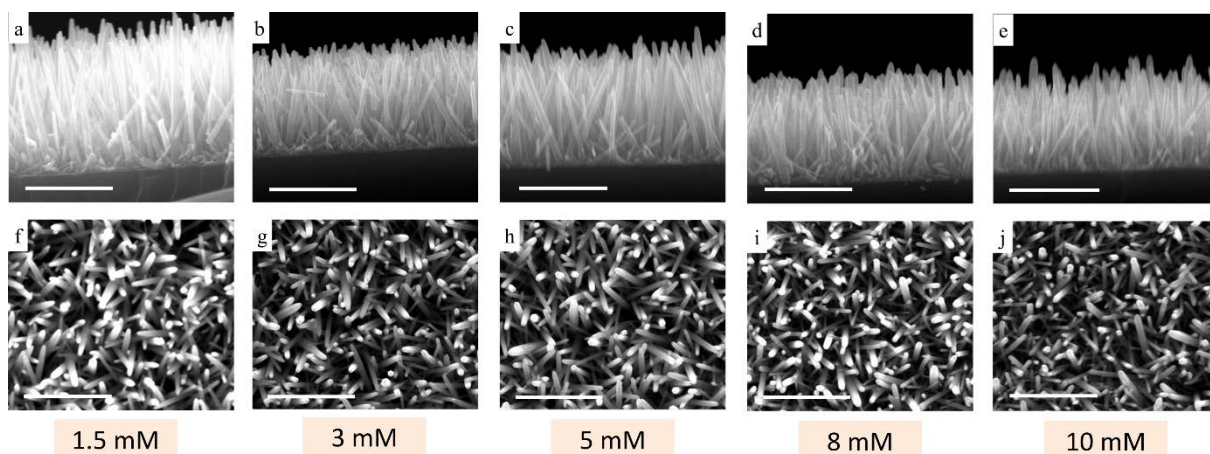


Figure S1. (a-e) Cross-sectional view and (f-j) top-view FESEM images of ZnO NWs grown by CBD with a PEI concentration in the range of 1.5 to 10 mM and for a given Mw of 25 000. The scale bars represent 1 μm .

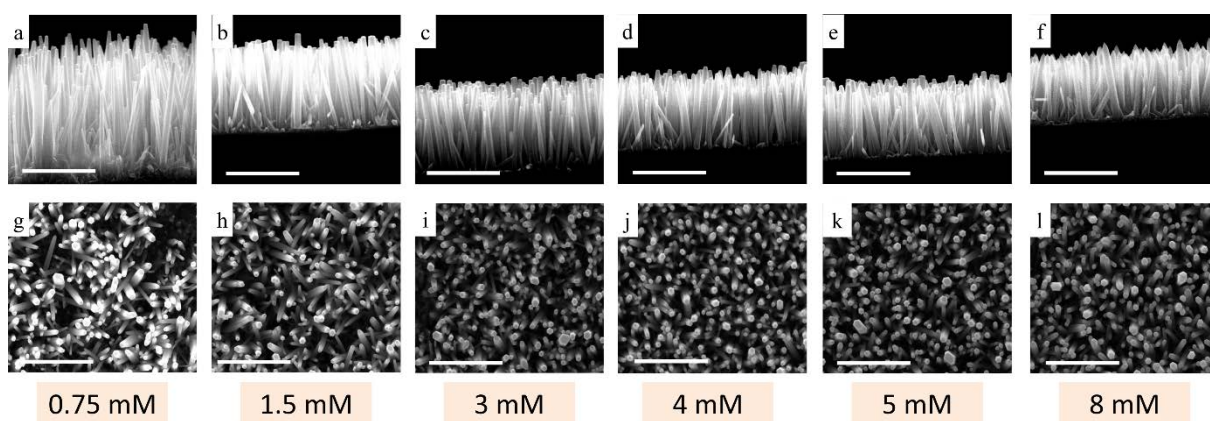


Figure S2. (a-f) Cross-sectional view and (g-l) top-view FESEM images of ZnO NWs grown by CBD with a PEI concentration in the range of 0.75 to 8 mM and for a given Mw of 750 000. The scale bars represent 1 μm .