

Supporting Information

Nanosheet Synthesis of Metal Organic Frameworks in a Sandwich-Like Reaction Field for Enhanced Gate-Opening Pressures

Takeru Omiya, Koki Sasaki, Yoshiaki Uchida*, Norikazu Nishiyama

Graduate School of Engineering Science, Osaka University, Toyonaka, Osaka 560-8531
(Japan)

E-mail: yuchida@cheng.es.osaka-u.ac.jp

Keywords: nanosheet; liquid crystal; metal organic framework; gas adsorption

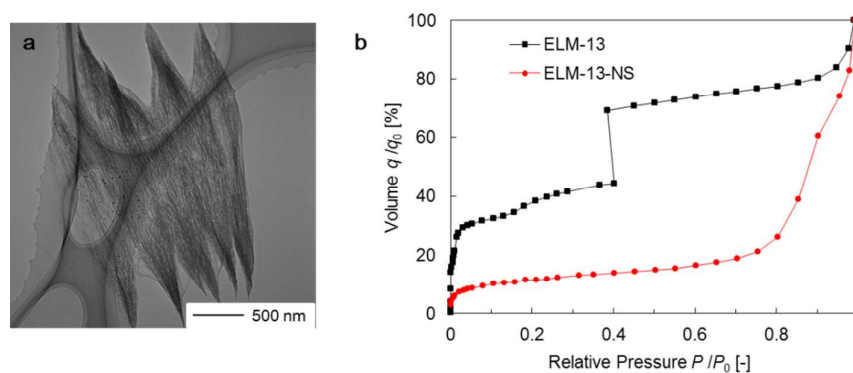


Figure S1. Synthesized NSs of ELM-13 and adsorption behaviors. (a) TEM photograph of the synthesized ELM-13-NSs. (b) N_2 adsorption measurements at 77 K for the ELM-13-NSs.

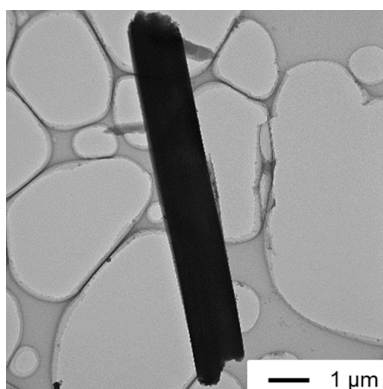


Figure S2. TEM photograph of one of the synthesized ELM-11.