

Supporting Information

A Nano-Protein Functionalized Hierarchical Composite Air-filter

Xin Fan^{†,‡,§}, Yu Wang^{*§}, Lushi Kong^l, Xuewei Fu[§], Min Zheng[§], Tian Liu[§],
Wei-Hong Zhong^{*§}, Siyi Pan^{*†,‡}

Number of pages: 3

Number of figures: 5

Number of tables: 0

Table of Contents

List of Figures:

| | |
|--|-----------|
| Figure S1. SEM images of pristine whey protein concentrate at different magnifications... | S3 |
| Figure S2. SEM images of bacterial cellulose (BC) at different magnifications..... | S3 |
| Figure S3. (a) SEM image of D-WPC@BC sample. (b) Diameter distribution of D-WPC.. | S3 |
| Figure S4. (a) SEM image of WP fabric, (b) pore size distribution of WP..... | S4 |
| Figure S5. The pressure drop of D-WPC/WP, BC/WP and D-WPC@BC/WP samples | S4 |

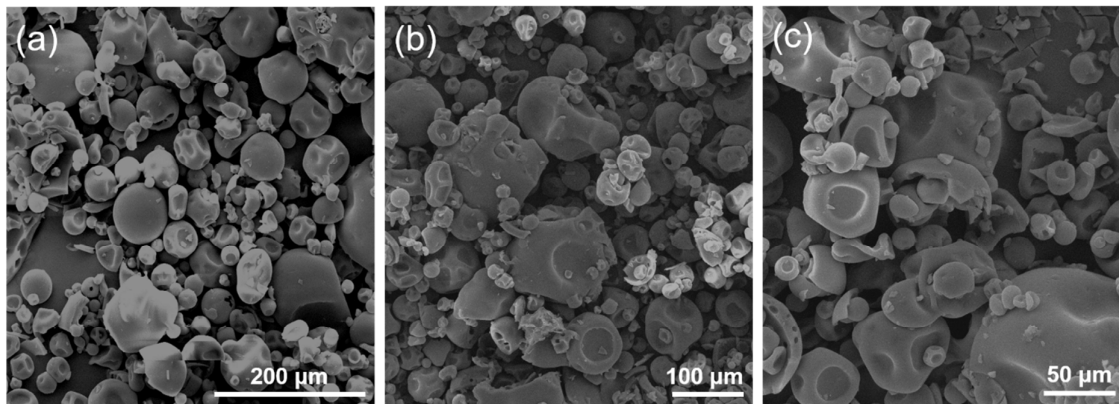


Figure S1. SEM images of pristine whey protein concentrate at different magnifications.

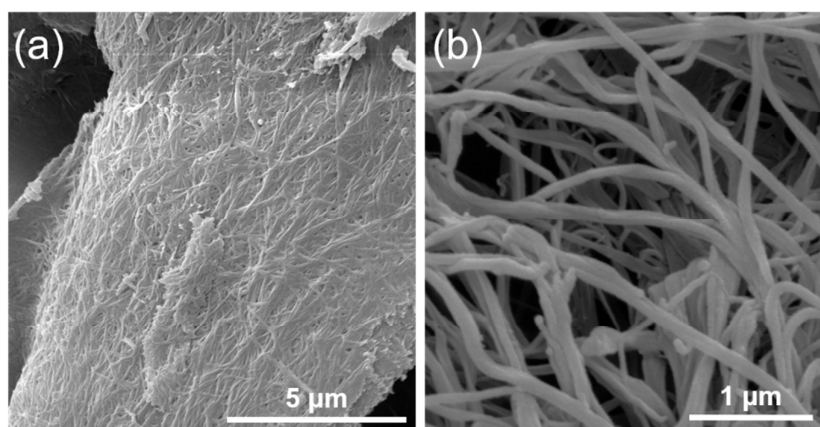


Figure S2. SEM images of pristine bacterial nano-cellulose (BC) at different magnifications.

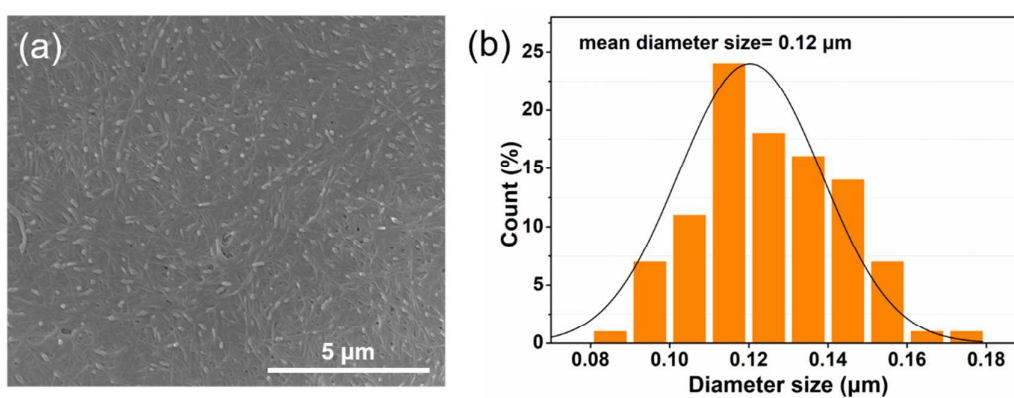


Figure S3. (a) SEM image of D-WPC@BC sample. (b) Diameter distribution of D-WPC.

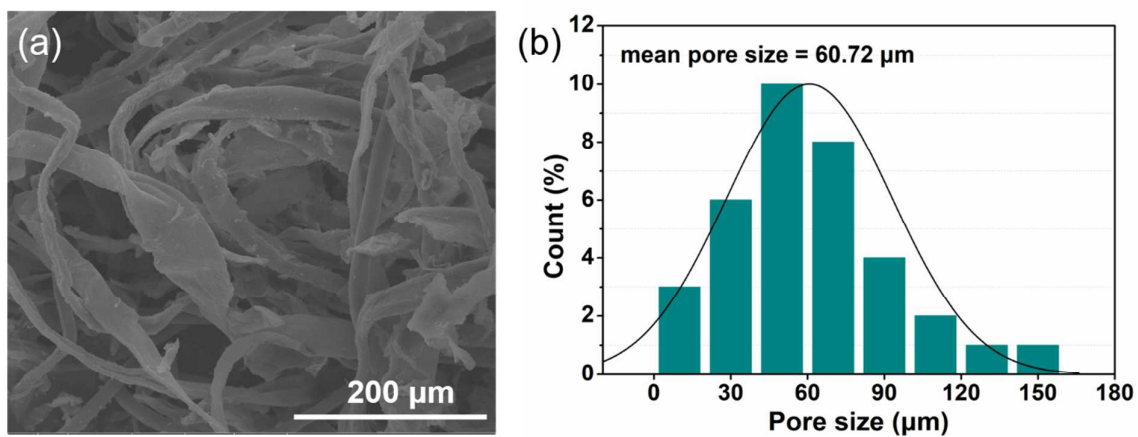


Figure S4. (a) SEM image of WP fabric, (b) pore size distribution of WP.

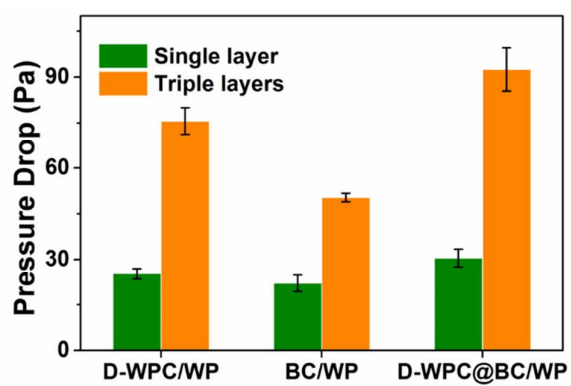


Figure S5. The pressure drop of D-WPC/WP, BC/WP and D-WPC@BC/WP samples.