

**Methotrexate-loaded extracellular vesicles functionalized with therapeutic
and targeted peptides for the treatment of glioblastoma multiforme**

*Zhilan Ye^{1,2,#}, Tao Zhang^{1, #}, Wenshan He³, Honglin Jin¹, Cuiwei Liu¹, Zhe Yang⁴, Jinghua Ren^{1, *}*

¹ Cancer center, Union Hospital, Tongji Medical College of Huazhong University of Science and Technology, Wuhan, China 430022

² Research Center for Tissue Engineering and Regenerative Medicine, Union Hospital, Tongji Medical College of Huazhong University of Science and Technology, Wuhan, China 430022

³ Department of Breast and Thyroid Surgery, Union Hospital, Tongji Medical College of Huazhong University of Science and Technology, Wuhan, China 430022

⁴ Hubei Collaborative Innovation Center for Advanced Organic Chemical Materials; Ministry of Education Key Laboratory for the Green Preparation and Application of Functional Materials, Hubei University, Wuhan, China 430022

#These authors contribute equally to this work

*Correspondence to: Jinghua Ren, jhrenmed@hust.edu.cn

Supplementary Information

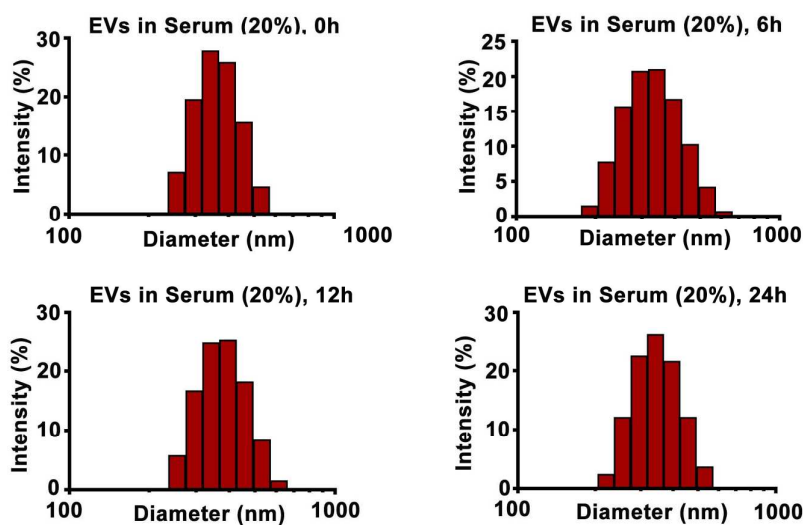


Figure S1. Size distribution of MTX@EVs-KLA-LDL in PBS containing 20% serum at different times (0h, 6h, 12h, 24h).

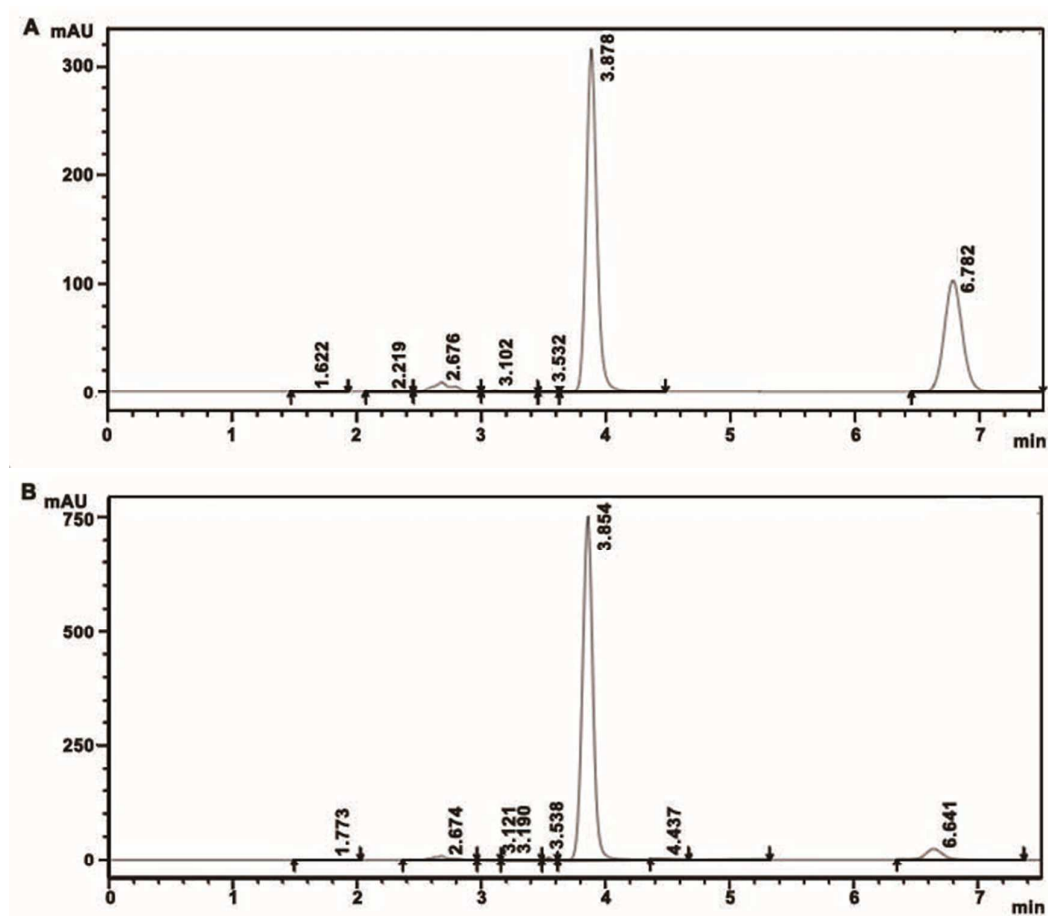
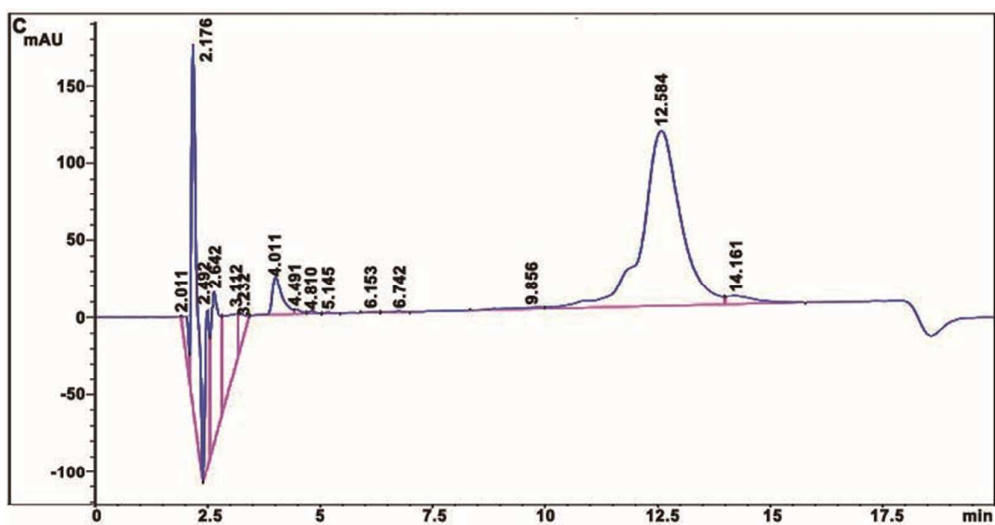
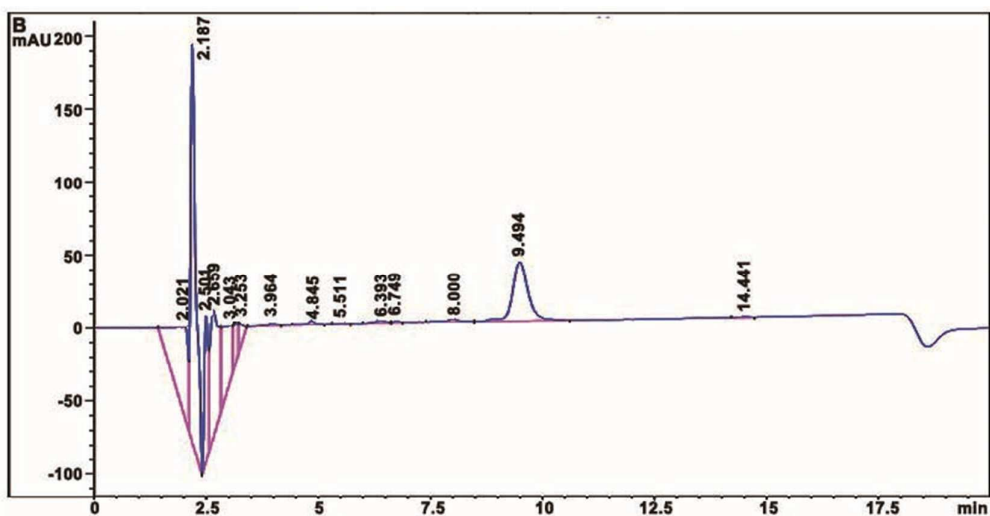
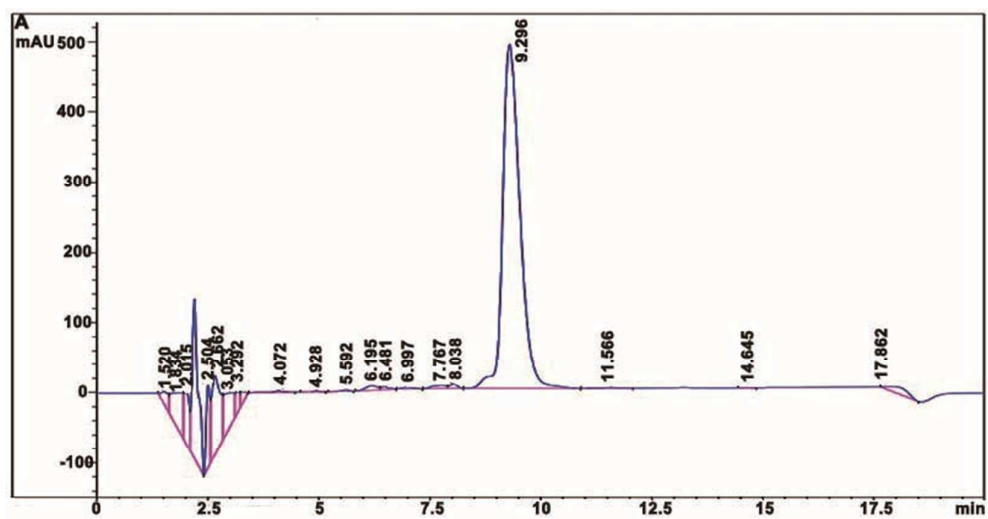


Figure S2. The amount of MTX encapsulated into EVs was measured by HPLC. The typical HPLC profile for MTX extracted from EVs (B) and MTX standards (A) are

shown here.



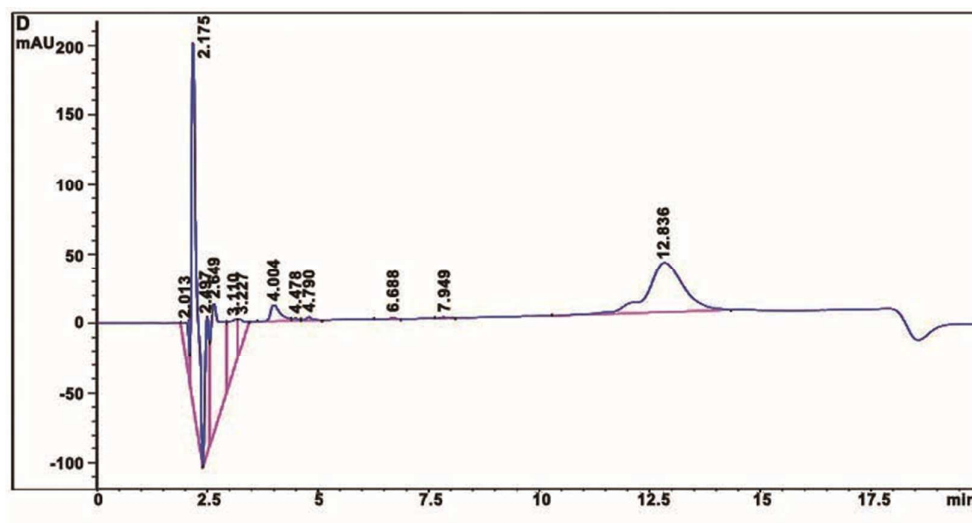


Figure S3. The amount of peptide LDL (A, B) or KLA-LDL (C, D) was assessed by HPLC. The typical HPLC profile for free peptide collected from supernatant (B, D) and peptide standards (A, C) are shown here.