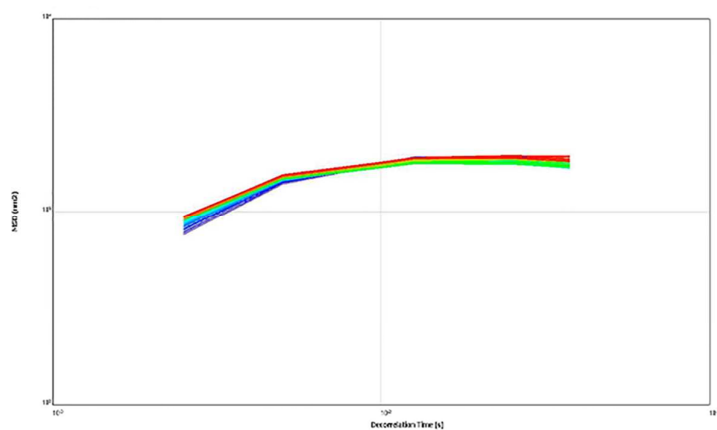


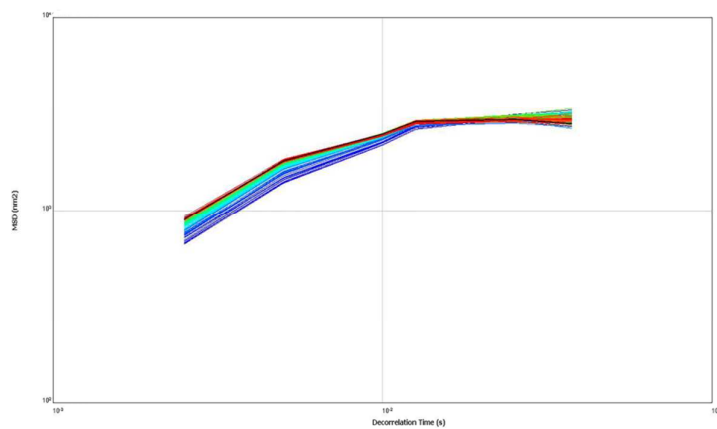
Supplementary Materials

Figure.S1 The Mean Square Displacement vs time curves for WGP (polysaccharide from wheat germ) (the first curves are in blue, then green, and lastly in red; A, B, C, D, E was the concentration of WGP at 0.1, 0.5, 1, 3, 5 mg/mL respectively).

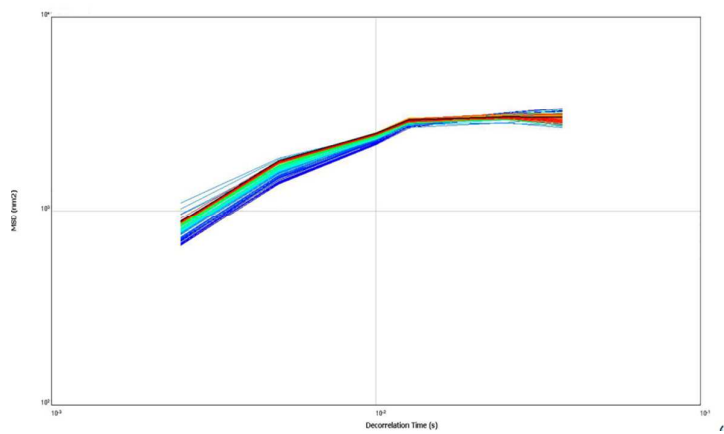
A



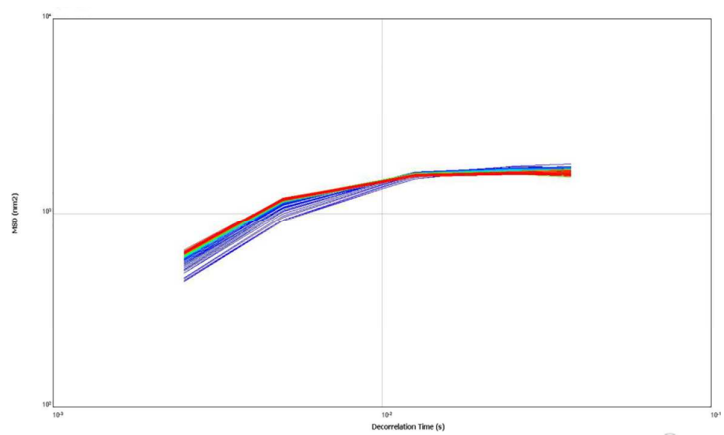
B



C



D



E

