

**Surface Modification of Basalt Fiber with Organic/Inorganic Composites for  
Biofilm Carrier Used in Wastewater Treatment**

Xiaoying Zhang<sup>a</sup>, Xiangtong Zhou<sup>a\*</sup>, Huicheng Ni<sup>a</sup>, Xinshan Rong<sup>a</sup>, Qian Zhang<sup>a</sup>, Xiang Xiao<sup>a</sup>,  
Huan Huan<sup>b</sup>, Jun Feng Liu<sup>c</sup>, Zhiren Wu<sup>a\*</sup>

<sup>a</sup> School of the Environment and Safety Engineering, Jiangsu University, No. 301

Xuefu Road, Jingkou District, Zhenjiang 212013, China

<sup>b</sup> State Environmental Protection Key Laboratory of Simulation and Control of  
Groundwater Pollution, Chinese Research Academy of Environmental Sciences, No.8

Dayangfang, Anwai Beiyuan, Chaoyang District, Beijing 100012, China

<sup>c</sup> School of Environment, Harbin Institute of Technology, No. 73 Huanghe Road,

Nangang District, Harbin 150090, China

Number of pages: 5

Number of figures: 2

Number of Tables: 2

**Table of contents:**

1. Synthetic route of polyacrylamide/epoxy/nano-SiO <sub>2</sub> coating	Page
S2	
2. The recipe for the preparation of polyacrylamide/epoxy/nano-SiO <sub>2</sub> coating	Page
S3	
3. Water contact angle data of BF and MBF	Page
S4	
4. Pictures of BF and MBF after microorganism immobilization tests	Page
S5	

\*Corresponding authors:

E-mail: [wuzhiren@ujes.edu.cn](mailto:wuzhiren@ujes.edu.cn) (Zhiren Wu); [xtzhou@ujes.edu.cn](mailto:xtzhou@ujes.edu.cn) (Xiangtong Zhou)

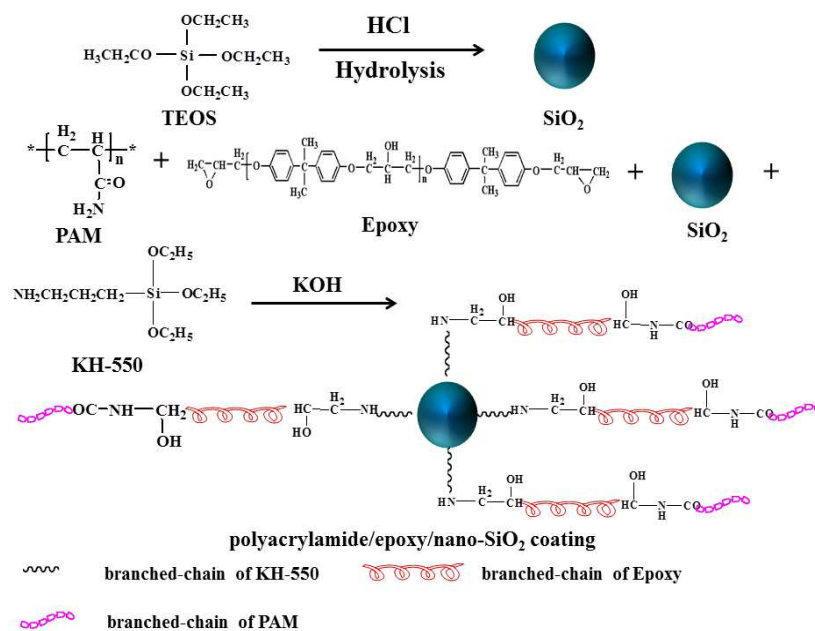


Figure S1 Synthetic route of polyacrylamide/epoxy/nano-SiO<sub>2</sub> coating

Table S1 The recipe for the preparation of polyacrylamide/epoxy/nano-SiO<sub>2</sub> coating

Sample	Nano-SiO <sub>2</sub> (g)	KH-550 (g)	PAM (g)	HTMAC (g)	Epoxy (g)	KPS (g)	H <sub>2</sub> O (g)
polyacrylamide/epoxy /nano-SiO <sub>2</sub> coating	3.00	0.24	0.30	0.13	16.27	0.08	64.99

Table S2 Water contact angle data of BF and MBF samples

Sample	Water contact angle data
BF (0 s)	159.246
BF (50 s)	157.816
BF (100 s)	155.768
BF (150 s)	154.984
MBF (0 s)	44.068
MBF (50 s)	36.319
MBF (100 s)	22.546
MBF (150 s)	1.592



Figure S2 Pictures of BF (A) and MBF (B) before and after microorganism immobilization tests